



Spacious One Bedroom Apartment in the Heart of
Connaught Village

HYDE PARK SQUARE

HYDE PARK, W2

£650 per week

**BERKSHIRE
HATHAWAY**
HOMESERVICES

LONDON

PROPERTY DETAILS

Guide Price
£650 per week

Square Footage
665

Council Tax Band
G

EPC Rating
C

This beautifully presented one bedroom apartment is situated on one of W2's most popular garden square on the 5th floor, with lift access, in a portered building. The property comprises of a spacious west facing reception room accommodating a sizable living-dining area, as well as a separate kitchen and modern bathroom. Additionally the property features an abundance of built in storage throughout and air conditioning.

Hyde Park Square is located on the western edge of popular Connaught Village and within a short walk to Hyde Park itself. Transport from either Marble Arch Underground (Central Line) or Paddington Underground (Circle, Hammersmith & City Line) or Paddington Overground Railway Station.

FEATURES

One Bedroom

One Reception Room

One Bathroom

Communal Gardens

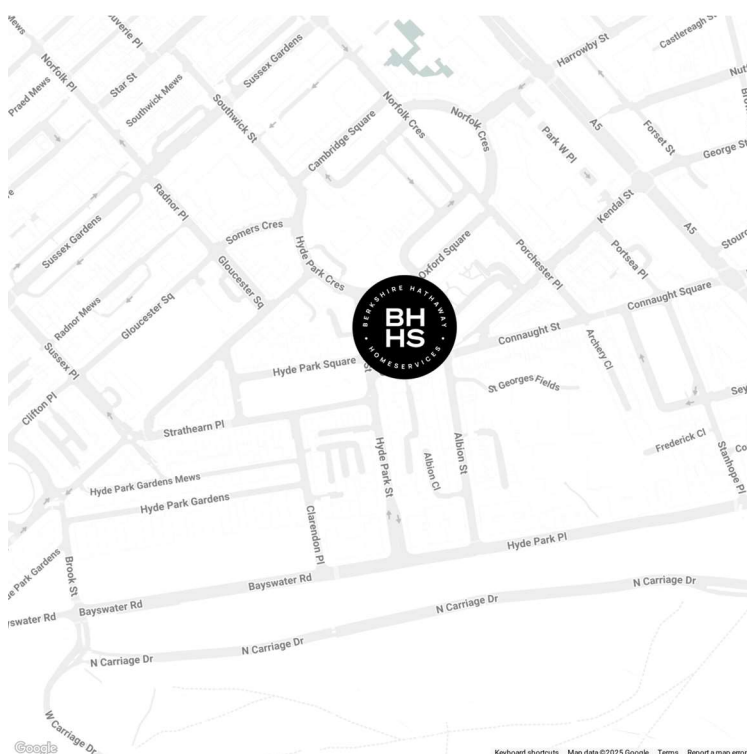
Upper Floor

Balcony

Concierge/Porter

Lift

LOCATION

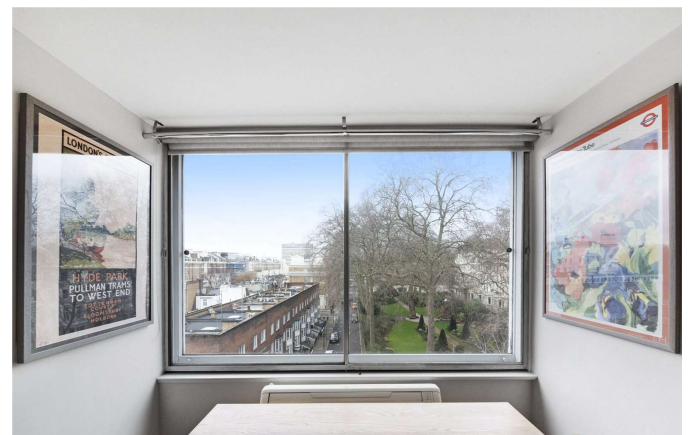


HYDE PARK LETTINGS

24-25 Albion Street, W2 2AX

020 7262 2030

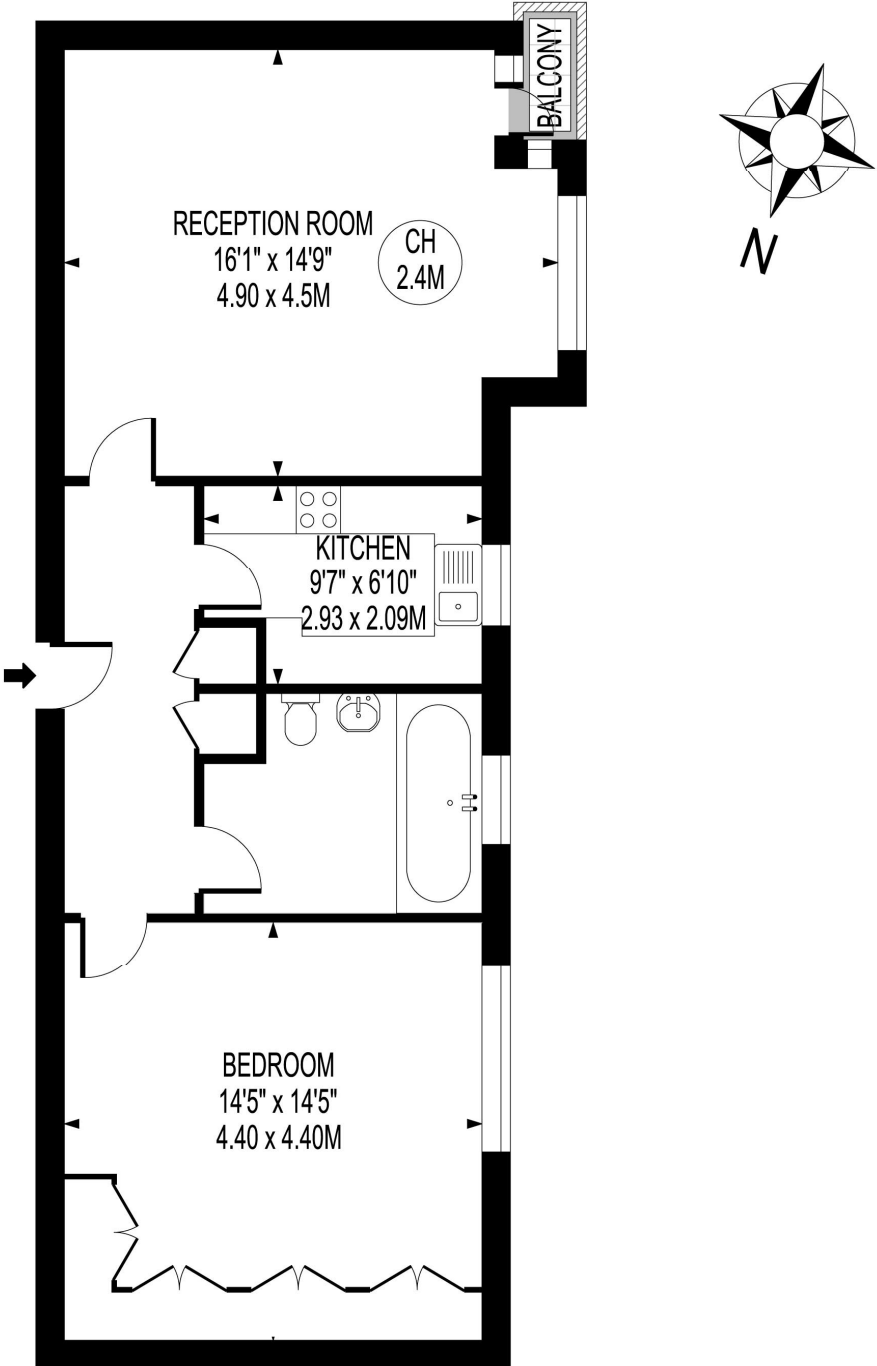
lettings.hydepark@bhhs-london.com



FLOORPLAN

HYDE PARK SQUARE

APPROXIMATE GROSS INTERNAL FLOOR AREA : 665 SQ FT- 61.80 SQ M



5TH FLOOR

FOR ILLUSTRATION PURPOSES ONLY

THIS FLOOR PLAN SHOULD BE USED AS A GENERAL OUTLINE FOR GUIDANCE ONLY AND DOES NOT CONSTITUTE IN WHOLE OR IN PART AN OFFER OR CONTRACT.
ANY INTENDING PURCHASER OR LESSEE SHOULD SATISFY THEMSELVES BY INSPECTION, SEARCHES, ENQUIRIES AND FULL SURVEY AS TO THE CORRECTNESS OF EACH STATEMENT.
ANY AREAS, MEASUREMENTS OR DISTANCES QUOTED ARE APPROXIMATE AND SHOULD NOT BE USED TO VALUE A PROPERTY OR BE THE BASIS OF ANY SALE OR LET.