



Stunning Three Bedroom Apartment with a
Spacious Balcony

OVAL ROAD

LONDON, NW1

£1,750 per week

**BERKSHIRE
HATHAWAY**
HOMESERVICES

LONDON

PROPERTY DETAILS

Guide Price £1,750 per week	Square Footage 1160	<p>A stunning three-bedroom, two-bathroom apartment in an award-winning development. The floor-to-ceiling windows allow natural light to flood the apartment. The flat also benefit from outside space, in the form of a spacious balcony and integrated appliances. The apartment is ideally located between Regents Park, Camden and Kings Cross, perfect for professionals and students alike. Available Now. Furnished.</p>
Council Tax Band G	EPC Rating C	

FEATURES

- Three Bedrooms
- Lift
- Two Bathrooms
- Pet Friendly
- Upper Floor
- Modern
- Balcony

LOCATION



MARYLEBONE LETTINGS

20A Paddington Street, W1U 5QP

020 7486 6338

lettings.marylebone@bhhs-london.com

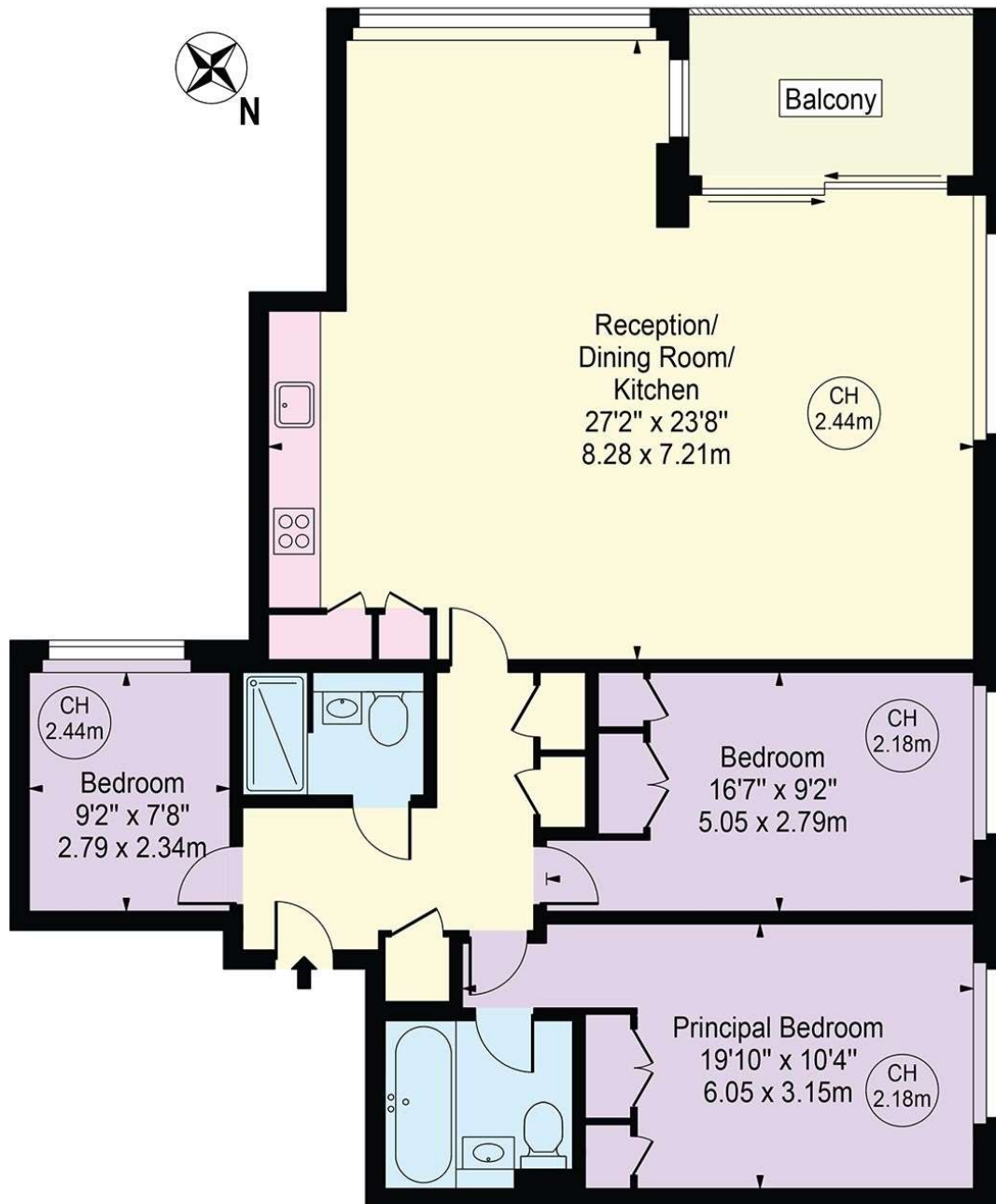


FLOORPLAN

Latitude House

Approx. Gross Internal Area 1160 Sq Ft - 107.77 Sq M

Approx. External Area Of Balcony 69 Sq Ft - 6.41 Sq M



Third Floor

For Illustration Purposes Only - Not To Scale

This floor plan should be used as a general outline for guidance only and does not constitute in whole or in part an offer or contract.
Any intending purchaser or lessee should satisfy themselves by inspection, searches, enquiries and full survey as to the correctness of each statement.
Any areas, measurements or distances quoted are approximate and should not be used to value a property or be the basis of any sale or let.

Copyright Morriarti Photography & Design LTD