



An Exceptional Three Bedroom Penthouse Apartment
with a Private Roof Terrace

SOUTHWICK STREET

HYDE PARK, W2

Asking Price
£1,300,000

**BERKSHIRE
HATHAWAY**
HOMESERVICES

LONDON

PROPERTY DETAILS

Guide Price £1,300,000	Square Footage 1343
Council Tax Band G	EPC C
Tenure Leasehold	

A well-proportioned, split level, 1343 square feet apartment with delightful westerly views over the rooftops of Connaught Village offering a high standard of accommodation with a particularly good kitchen breakfast room with access to a private terrace.

The accommodation comprises reception room, kitchen breakfast room, three generous bedrooms and two bathrooms.

Devonport is a well-run portered building with good lifts and smart communal areas and is peacefully yet conveniently located a short walk away from Paddington Station, Marble Arch and the shops and restaurants of Connaught Village.

FEATURES

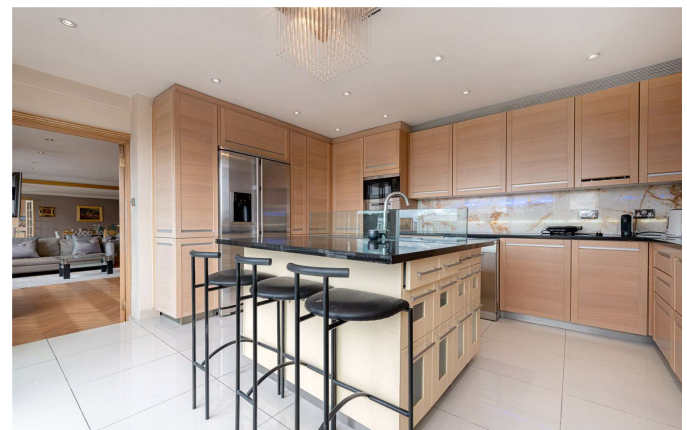
- Three Bedrooms
- One Reception Room
- Two Bathrooms
- Balcony
- Communal Gardens
- Upper Floor
- Modern
- Concierge/Porter

LOCATION



HYDE PARK SALES
24-25 Albion Street, W2 2AX

020 7262 2030
sales.hydepark@bhhs-london.com

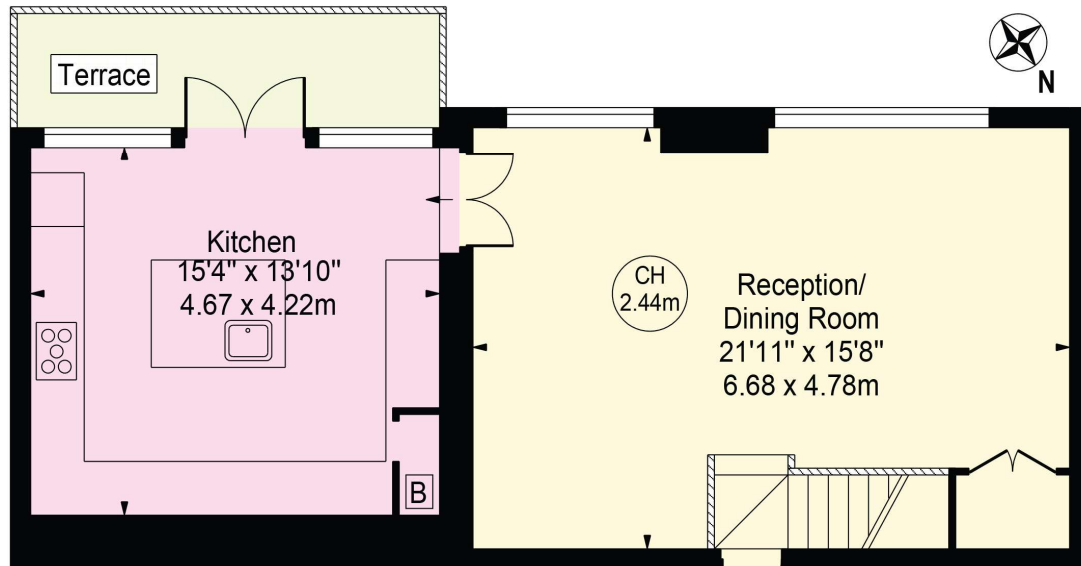


FLOORPLAN

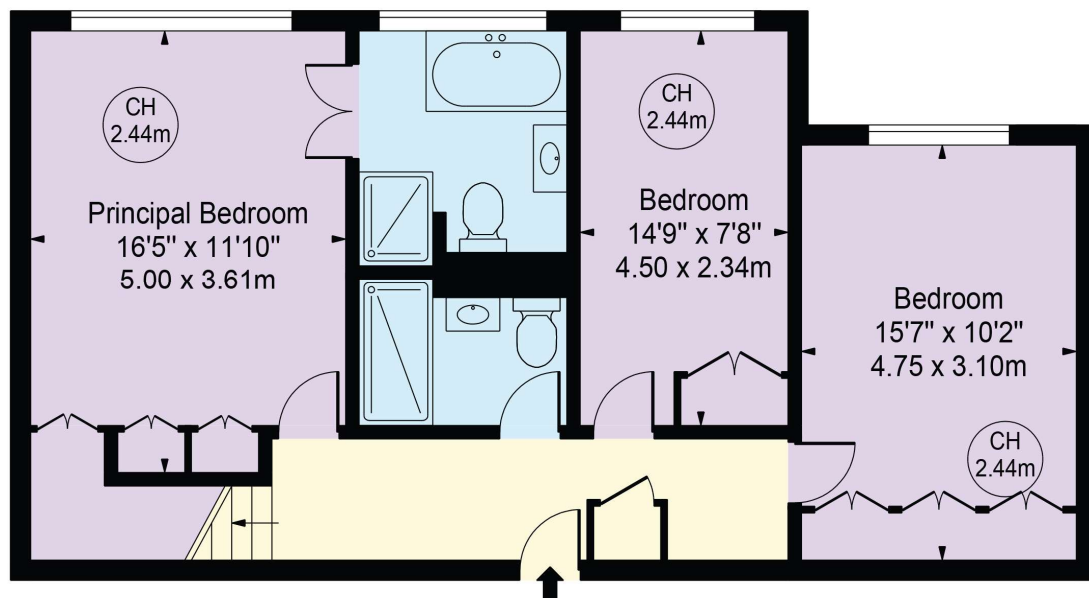
Devonport

Approx. Gross Internal Area 1311 Sq Ft - 121.80 Sq M

Approx. External Area Of Terrace 66 Sq Ft - 6.16 Sq M



Sixth Floor
(576 Sq Ft - 53.51 Sq M)



Fifth Floor
(735 Sq Ft - 68.28 Sq M)
For Illustration Purposes Only - Not To Scale

This floor plan should be used as a general outline for guidance only and does not constitute in whole or in part an offer or contract. Any intending purchaser or lessee should satisfy themselves by inspection, searches, enquiries and full survey as to the correctness of each statement. Any areas, measurements or distances quoted are approximate and should not be used to value a property or be the basis of any sale or let.

Copyright Morriarti Photography & Design LTD