



A Newly Renovated Mews House Close to Hyde
Park

LEINSTER MEWS

HYDE PARK, W2

Asking Price
£3,500,000

**BERKSHIRE
HATHAWAY**
HOMESERVICES

LONDON

PROPERTY DETAILS

Guide Price £3,500,000	Square Footage 2296
Council Tax Band H	EPC E
Tenure Freehold	

An exceptional opportunity to purchase a beautifully refurbished mews house, extended to offer over 2,100 sq ft of accommodation in one of the most sought-after mews in Bayswater, moments from Hyde Park.

Nestled in a quiet cobbled mews, this sophisticated home features pristine finishes, underfloor heating, and air conditioning, with dual-aspect windows bringing in natural light throughout. The space is perfectly designed with two well-proportioned reception areas, a designer kitchen, a large garage, guest bathroom and four spacious bedrooms, each with its own en suite and bespoke built-in wardrobes.

Leinster Mews boasts an enviable location, just moments from the open spaces of Kensington Gardens and Hyde Park. Excellent transport links include Lancaster Gate, Queensway, Bayswater, and Paddington Stations. In addition to National Rail services, the Elizabeth Line, Heathrow Express, and Crossrail provide numerous travel options. The nearby A40 also offers convenient access to the M4 and A406.

An array of shops, restaurants, cafes, and boutiques are accessible on Queensway, Westbourne Grove, and Notting Hill, as well as the main shopping districts on Oxford Street and Bond Street.

FEATURES

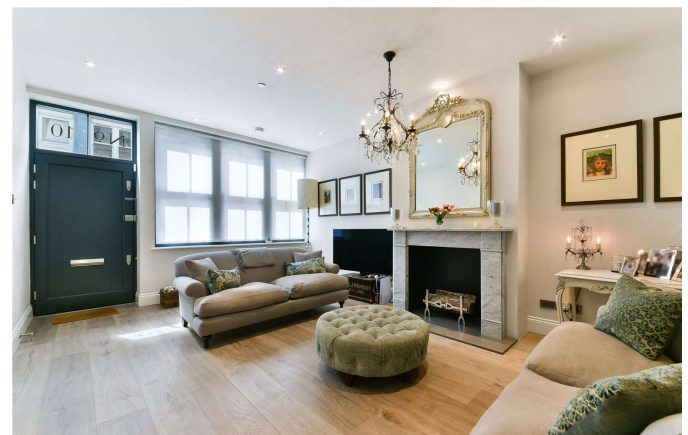
- Four Bedrooms
- Four Bathrooms
- Underfloor Heating
- Residents Parking
- Garage
- Air Conditioning
- Built-in Wardrobes

LOCATION



HYDE PARK SALES
24-25 Albion Street, W2 2AX


020 7262 2030
sales.hydepark@bhhs-london.com



FLOORPLAN

Leinster Mews, W2
Approximate Area = 197.8 sq m / 2129 sq ft
Garage = 15.5 sq m / 167 sq ft
Total = 213.3 sq m / 2296 sq ft
Including Limited Use Area (5.1 sq m / 54 sq ft)



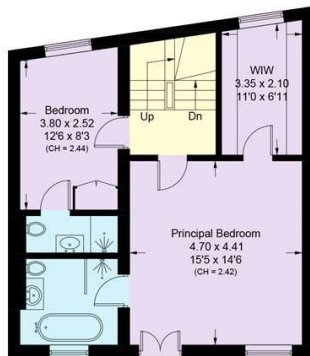
 = Reduce head heights below 1.5m



Lower Ground Floor
Approximate Area = 53.6 sq m / 577 sq ft
Including Limited Use Area (1.5 sq m / 16 sq ft)



Ground Floor
Approximate Area = 38.8 sq m / 418 sq ft
Including Limited Use Area (0.4 sq m / 4 sq ft)



First Floor
Approximate Area = 56.5 sq m / 608 sq ft
Including Limited Use Area (0.4 sq m / 4 sq ft)



Second Floor
Approximate Area = 48.9 sq m / 526 sq ft
Including Limited Use Area (2.8 sq m / 30 sq ft)

Surveyed and drawn in accordance with the International property measurements standards (IPMS 2: Residential) Not drawn to scale unless stated.
Whilst every care is taken in the preparation of this plan, please check all dimensions, shapes and compass bearings before making any decisions reliant upon them.