



An Impressive Modern Build Two Bedroom and
Two Bathroom Apartment with its Own Private
Terrace

YORK WAY

KING'S CROSS, N7

£850 per week

**BERKSHIRE
HATHAWAY**
HOMESERVICES

LONDON

PROPERTY DETAILS

Guide Price £850 per week	Square Footage 735
Council Tax Band F	EPC Rating B

An immaculately presented two-bedroom, two-bathroom apartment located on one of the higher floors in the popular XY Development.

The building itself is located within the Kings Cross area, which itself has benefited from recent substantial development and generation turning into one of the capital's techs, eating and shopping hot spots.

So called for their location on the XY coordinates between King's Cross and Camden stations, the apartments are ideally located for access to two of London's most vibrant urban centres. The property is walking distance to King's Cross St. Pancras Station, which offers transport links to local, national, and international destinations.

FEATURES

- Two Bedrooms
- One Reception Room
- Two Bathrooms
- Concierge/Porter
- Upper Floor
- Roof Terrace
- New Development, Modern

LOCATION

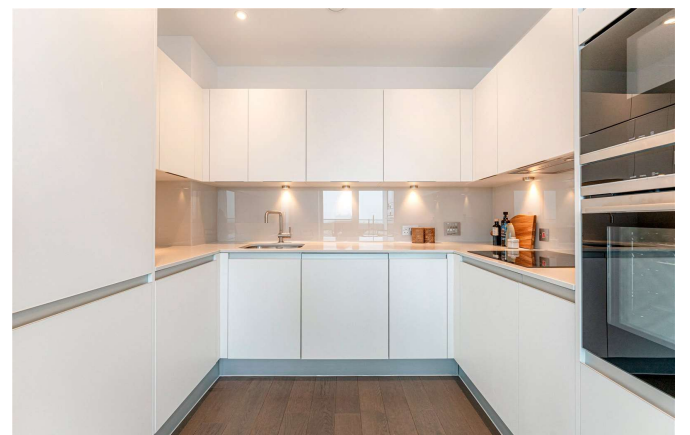


KINGS CROSS LETTINGS

Unit 4,6 Pancras Square, N1C 4AG

020 7467 2020

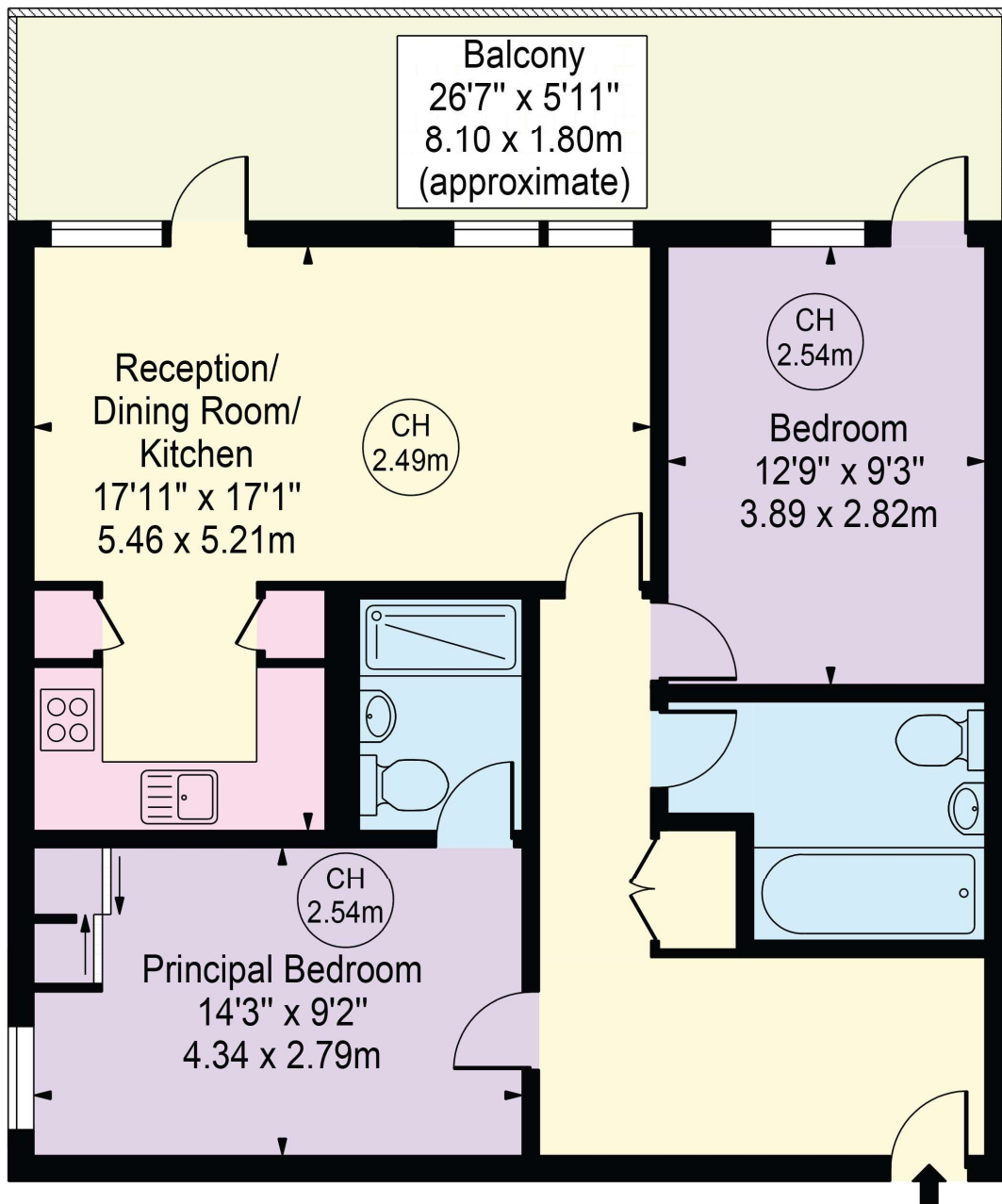
lettings.kingscross@bhhs-london.com



FLOORPLAN

Apartments

Approx. Gross Internal Area 735 Sq Ft - 68.28 Sq M
Approx. External Area Of Balcony 173 Sq Ft - 16.07 Sq M



Seventeenth Floor

For Illustration Purposes Only - Not To Scale

This floor plan should be used as a general outline for guidance only and does not constitute in whole or in part an offer or contract.
Any intending purchaser or lessee should satisfy themselves by inspection, searches, enquiries and full survey as to the correctness of each statement.
Any areas, measurements or distances quoted are approximate and should not be used to value a property or be the basis of any sale or let.

Copyright Morriarti Photography & Design LTD