



A Stunning Two Bedroom Apartment in the Heart
of Kensington

LEXHAM GARDENS

KENSINGTON, W8

£1,160 per week

**BERKSHIRE
HATHAWAY**
HOMESERVICES

LONDON

PROPERTY DETAILS

Guide Price £1,160 per week	Square Footage 765
Council Tax Band TBC	EPC Rating C

Somerset Court comprises two adjoining Victorian white stucco fronted properties that have been converted into 14 apartments.

This apartment situated on the second floor comprises reception room, separate kitchen, bathroom and separate guest cloakroom.

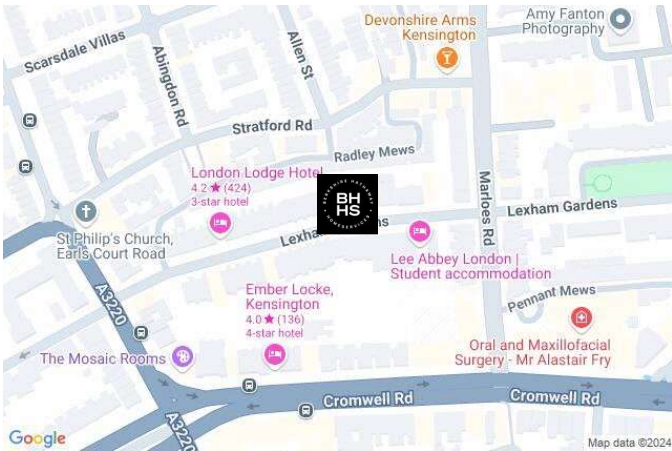
Close to High Street Kensington and Holland Park, the newly re-decorated apartments benefit from lots of natural light with some apartments benefiting from use of a beautiful south facing landscaped garden.

Somerset Court is equidistant to High Street Kensington and Gloucester Road tube stations.

FEATURES

Two Bedrooms
One Reception Room
One Bathroom
Residents Parking
Terraced
Lift
Pet Friendly
Furnished

LOCATION

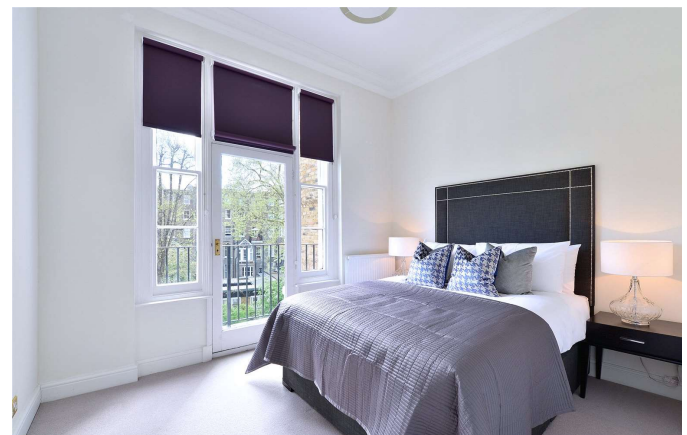
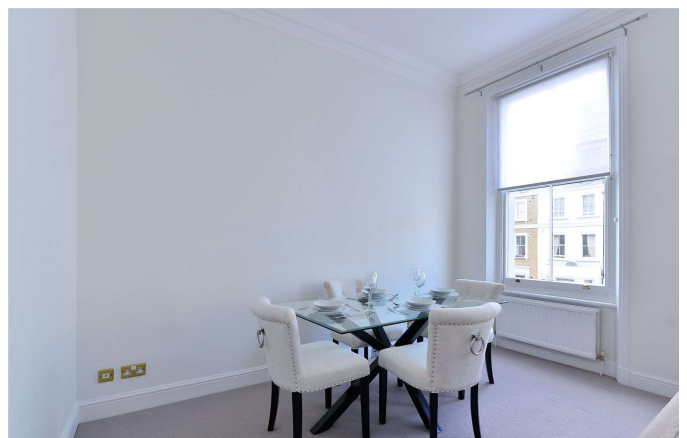


KNIGHTSBRIDGE LETTINGS

55-57 SLOANE AVENUE, SW3 3DH

020 7235 9641

lettings.knightsbridge@bhhs-london.com



FLOORPLAN

