



Three Bedroom Apartment with Fabulous Views  
and Communal Roof Terrace in King's Cross

# YORK WAY

KING'S CROSS, N1C

£1,125 per week

**BERKSHIRE  
HATHAWAY**  
HOMESERVICES

LONDON

# PROPERTY DETAILS

<b>Guide Price</b> £1,125 per week	<b>Square Footage</b> 950
<b>Council Tax Band</b> F	<b>EPC Rating</b> B

A light and spacious three double flat located in this award-winning block designed by Maccreeanor Lavington Architects in the heart of King's Cross. Set on the 8th floor, the property boasts three double bedrooms, a large living area with access to a private balcony. There is also a spacious kitchen and dining area separate to the living space, which also benefits from access to the private Balcony. This modern home also has a family bathroom, and a separate WC.

Saxon Court is within easy reach of King's Cross Station, St Pancras International/Eurostar services, Regent's Canal, Granary Square, and Coal Drops Yard, and is well placed for enjoyment of the vibrant and regenerated King's Cross area.

## FEATURES

- Three Bedrooms
- One Reception Room
- One Bathroom
- Upper Floor
- Balcony
- Lift
- New Development

## LOCATION



### KINGS CROSS LETTINGS

Unit 4,6 Pancras Square, N1C 4AG

020 7467 2020

lettings.kingscross@bhhs-london.com

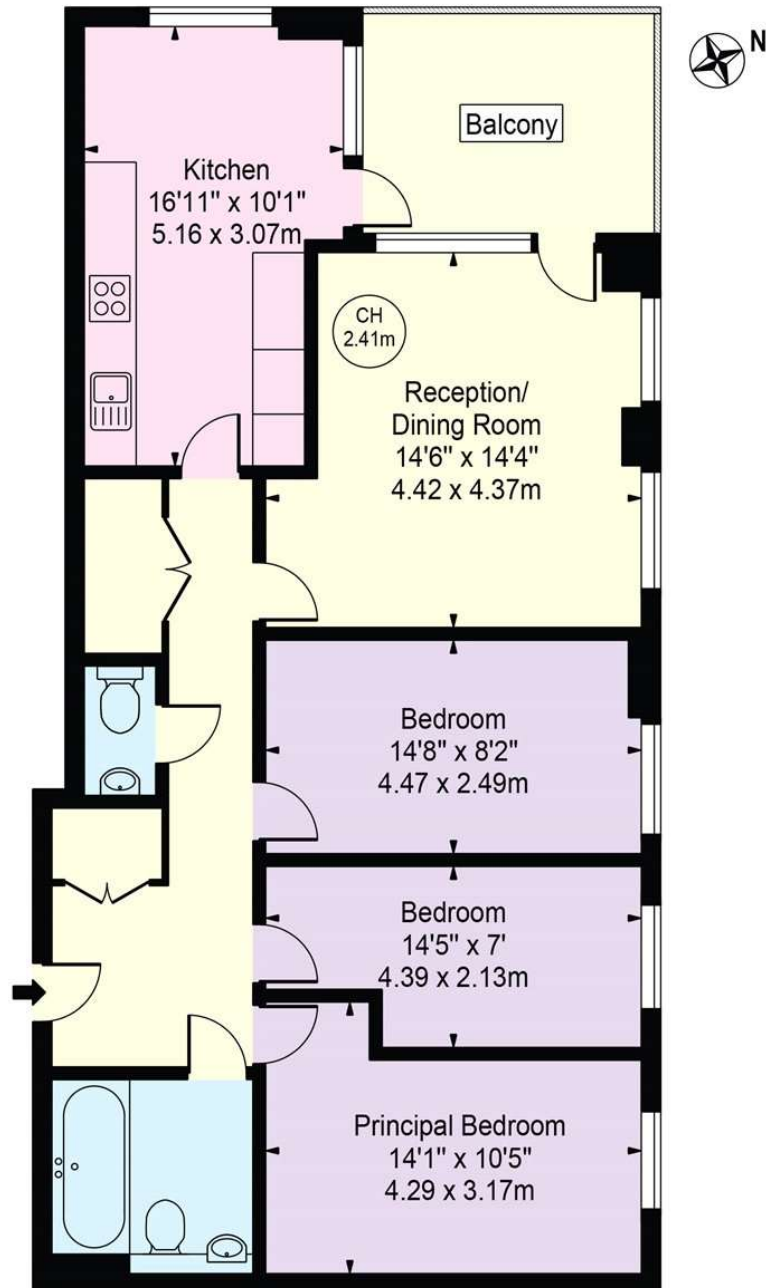


# FLOORPLAN

## Saxon Court

Approx. Gross Internal Area 950 Sq Ft - 88.26 Sq M

Approx. External Area Of Balcony 96 Sq Ft - 8.92 Sq M



## Seventh Floor

For Illustration Purposes Only - Not To Scale

This floor plan should be used as a general outline for guidance only and does not constitute in whole or in part an offer or contract. Any intending purchaser or lessee should satisfy themselves by inspection, searches, enquiries and full survey as to the correctness of each statement. Any areas, measurements or distances quoted are approximate and should not be used to value a property or be the basis of any sale or let.

Copyright Morriarti Photography & Design LTD