



A Luxurious Two Bedroom Duplex Penthouse
Apartment in the Heart of Soho

DEAN STREET

SOHO, W1D

£2,076.92 per
week

**BERKSHIRE
HATHAWAY**
HOMESERVICES

LONDON

PROPERTY DETAILS

Guide Price £2,076.92 per week	Square Footage 1392
Council Tax Band E	EPC Rating C

This magnificent penthouse apartment is split over the top two floors with lift access. It benefits from having floor to ceiling windows offering unparalleled views across Central London with sliding doors which lead out to a roof terrace wrapping around the entire top floor of this spectacular apartment.

Comprising a large primary suite, a second double bedroom, shower room, and a large open plan kitchen reception room with a separate utility room.

Located on Dean Street which is ideally situated in the centre of Soho and the property is moments from bars, cafes, and restaurants with a more comprehensive selection available on nearby Oxford Street. The area is extremely well served by public transport with Tottenham Court Road underground station (Central, Northern & Elizabeth lines) and Leicester Square underground station (Northern and Piccadilly lines) close by.

FEATURES

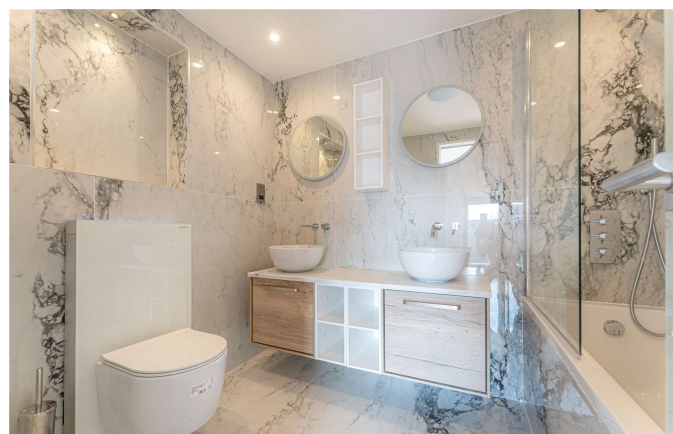
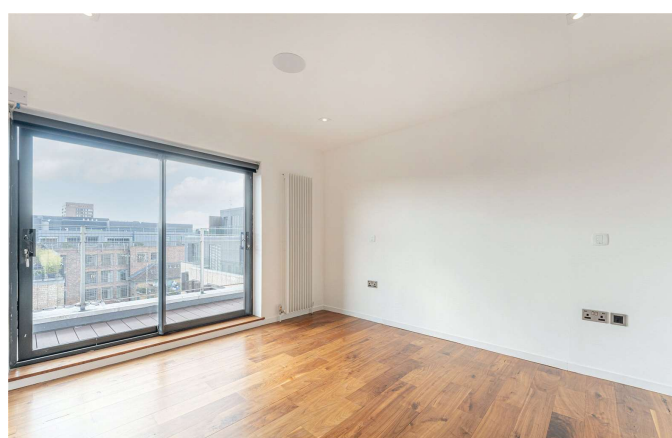
Two Bedrooms
One Reception Room
Two Bathrooms
Penthouse
New Development
Lift
Roof Terrace
Part Furnished

LOCATION



MARYLEBONE LETTINGS
20A Paddington Street, W1U 5QP

020 7486 6338
lettings.marylebone@bhhs-london.com

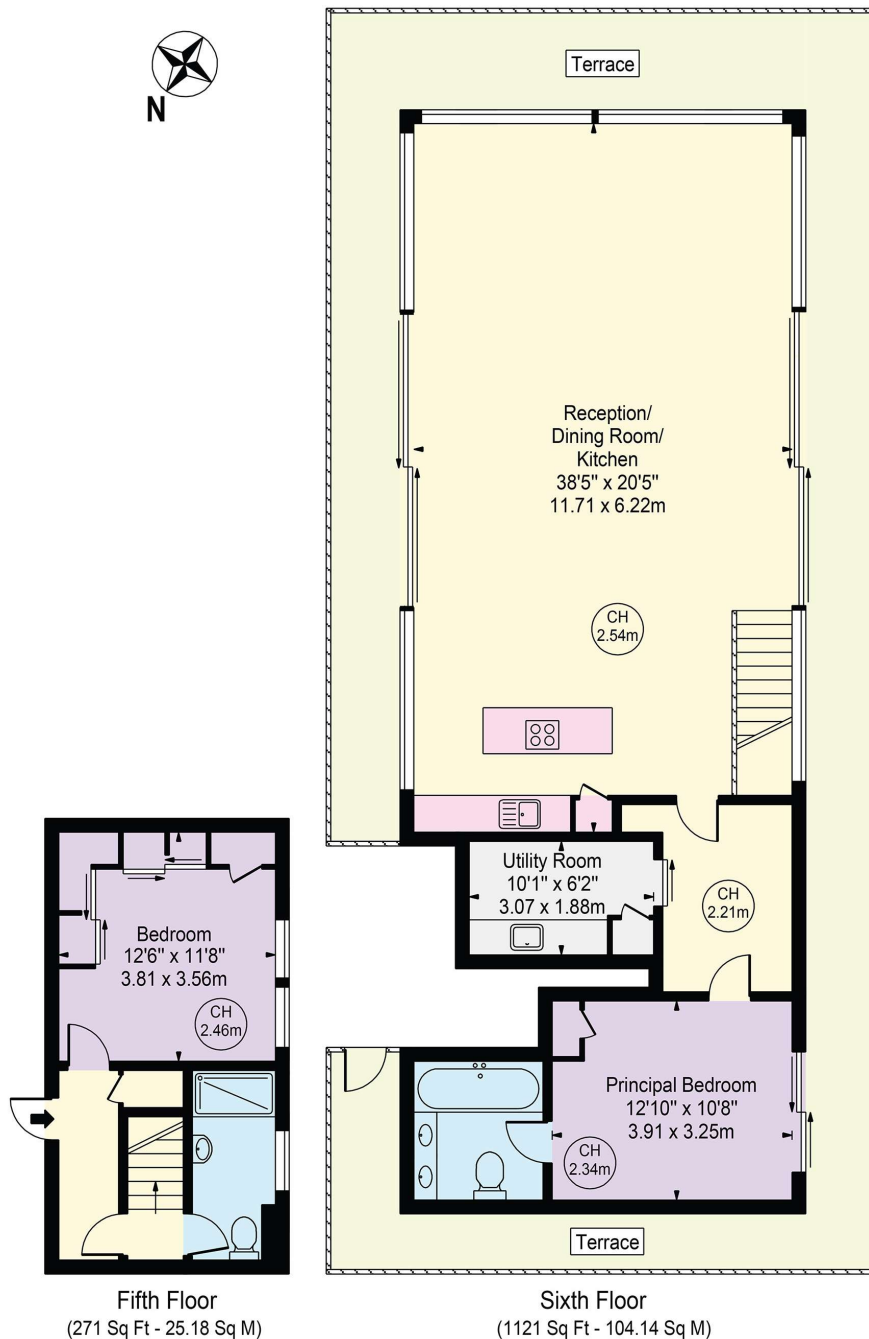


FLOORPLAN

Dean Street

Approx. Gross Internal Area 1392 Sq Ft - 129.32 Sq M

Approx. External Area Of Terrace 650 Sq Ft - 60.39 Sq M



For Illustration Purposes Only - Not To Scale

This floor plan should be used as a general outline for guidance only and does not constitute in whole or in part an offer or contract. Any intending purchaser or lessee should satisfy themselves by inspection, searches, enquiries and full survey as to the correctness of each statement. Any areas, measurements or distances quoted are approximate and should not be used to value a property or be the basis of any sale or let.

Copyright Morriarti Photography & Design LTD