



A Substantial Six Bedroom Townhouse Close to Hyde Park

NORFOLK CRESCENT

HYDE PARK ESTATE, W2

Asking Price
£2,500,000

**BERKSHIRE
HATHAWAY**
HOMESERVICES

LONDON

PROPERTY DETAILS

Guide Price	Square Footage
£2,500,000	2,026

Council Tax Band	EPC
H	C

Tenure

Leasehold 115 years remaining

This magnificent townhouse offers flexible accommodation laid out over four floors, making it an ideal Central London family home. Views over Norfolk Crescent and Oxford Square can be enjoyed from the principal reception room, master bedroom suite and delightful roof terrace.

In addition, the property is located just moments from Hyde Park and Oxford Street.

FEATURES

Six Bedrooms

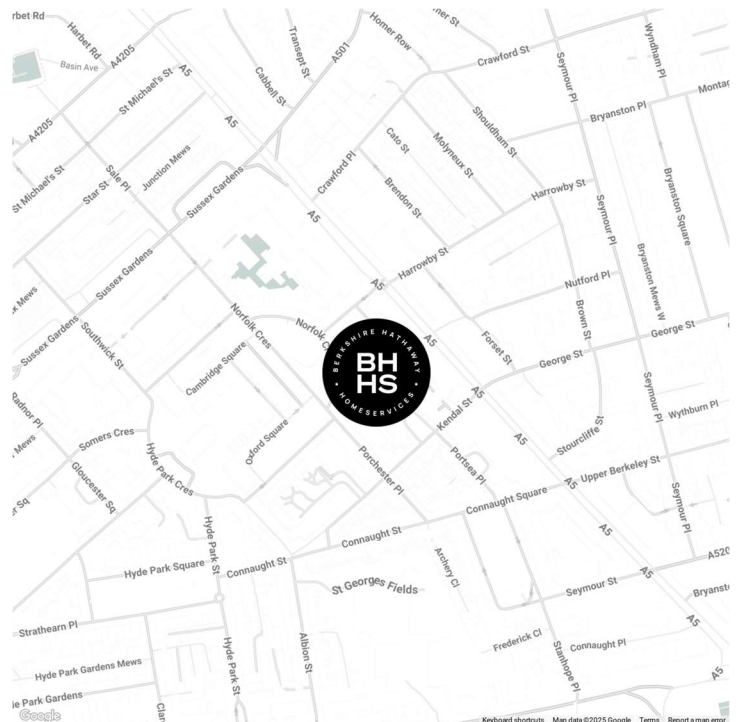
One Reception Room

Four Bathrooms

Roof Terrace

House

LOCATION

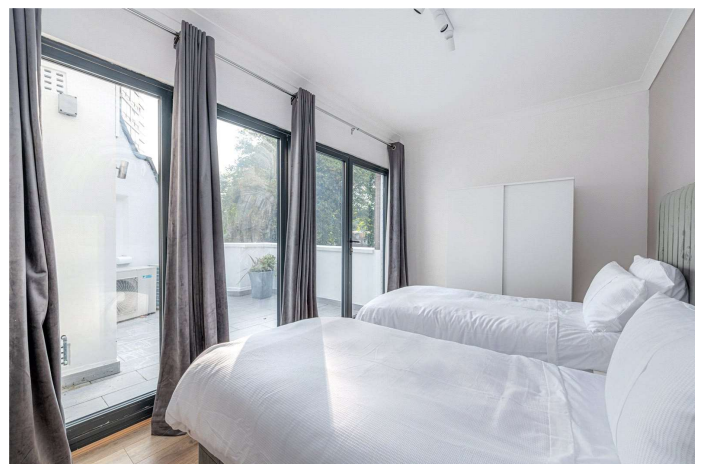
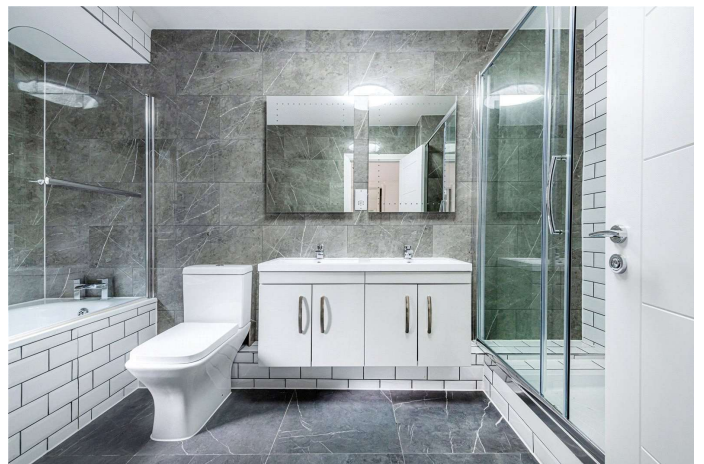
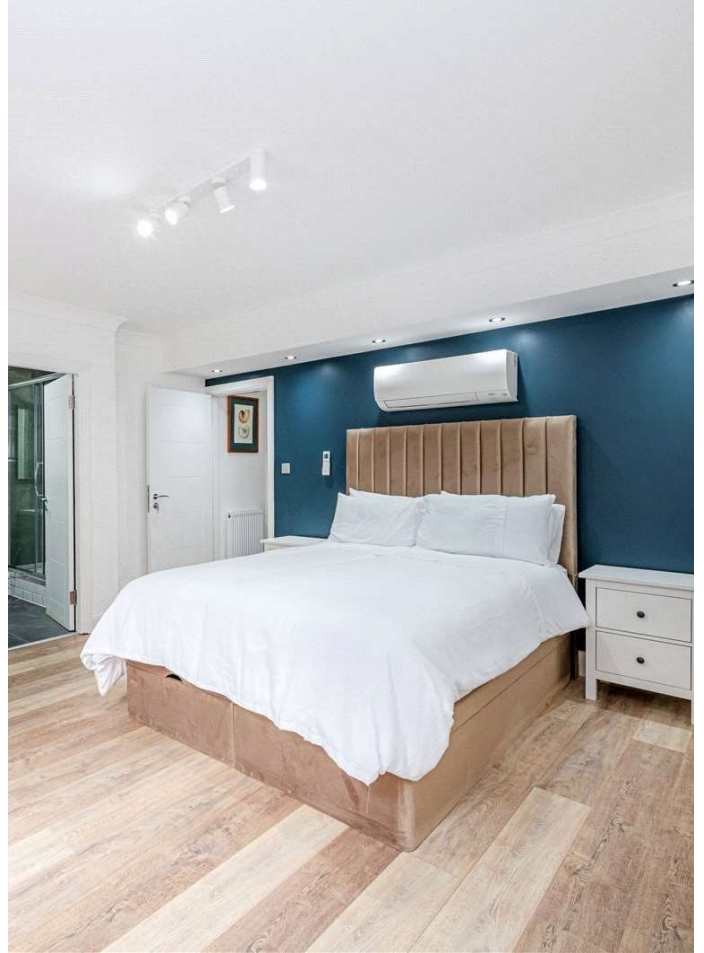


HYDE PARK SALES

24-25 Albion Street, W2 2AX

020 7262 2030

sales.hydepark@bhhs-london.com



FLOORPLAN

Norfolk Crescent, W2

Approximate Gross Internal Floor Area : 2026 sq ft / 188.2 sq m (Including External Store)
Approximate Gross Internal Floor Area : 1993 sq ft / 185.2 sq m (Excluding External Store)

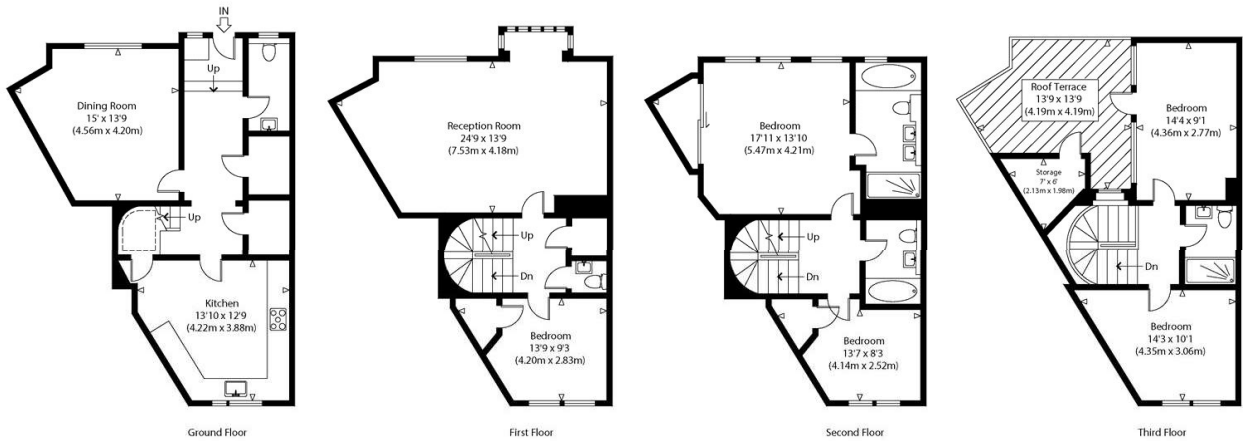


Illustration for identification purposes only, measurements are approximate, not to scale.