



A Bright Two Bedroom Apartment in a Sought
After Portered Mansion Block

HALLAM STREET

FITZROVIA, W1W

£923.08 per week

**BERKSHIRE
HATHAWAY**
HOMESERVICES

LONDON

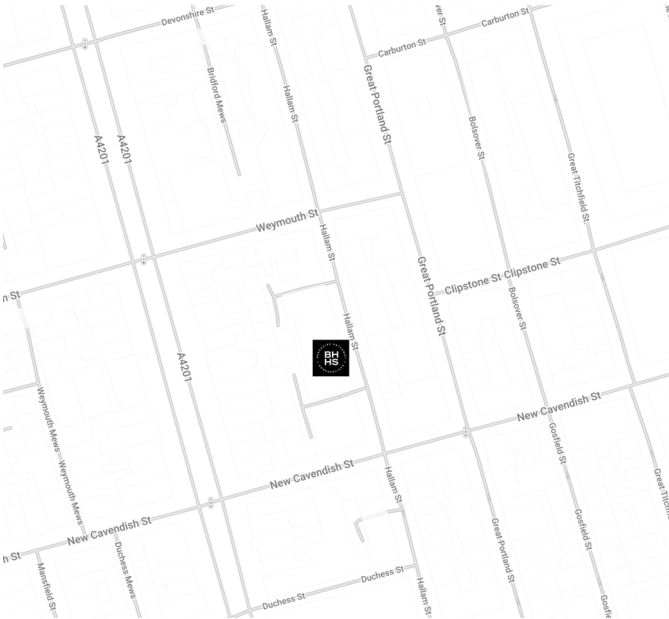
PROPERTY DETAILS

Guide Price £923.08 per week	Square Footage 630	A bright and spacious two bedroom apartment in a popular portered mansion block in the heart of Fitzrovia.
Council Tax Band F	EPC Rating C	The property benefits from two large double bedrooms, two bathrooms, an open plan kitchen reception room and lift access.
		The property is ideally located moments from the open spaces of Regents Park and Oxford Circus Underground Station.

FEATURES

Two Bedrooms
One Reception Room
Two Bathrooms
Concierge/Porter
Upper Floor
Lift
24 Hour Security
Period

LOCATION

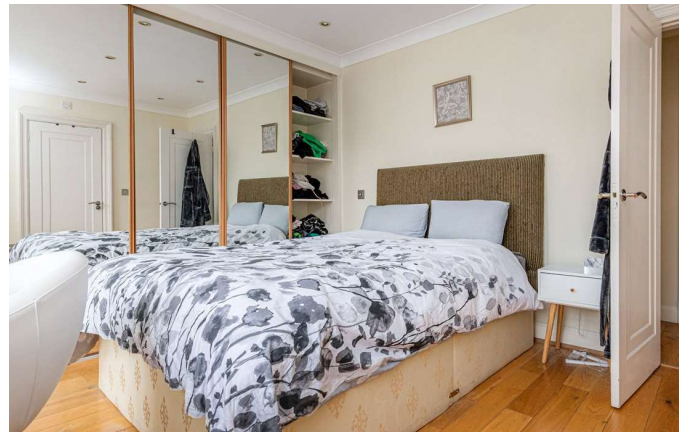


MARYLEBONE LETTINGS

20A Paddington Street, W1U 5QP

020 7486 6338

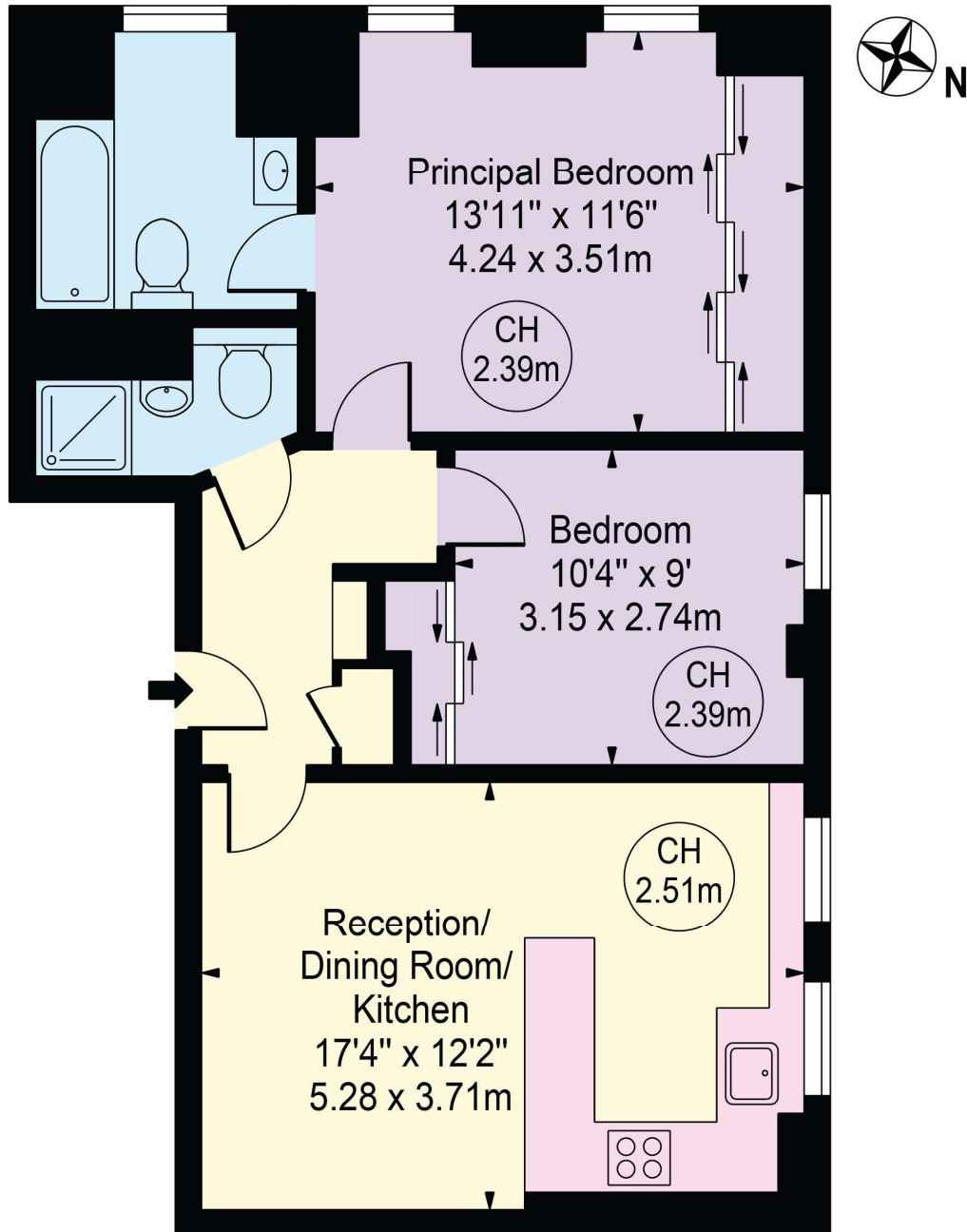
lettings.marylebone@bhhs-london.com



FLOORPLAN

Hallam Street

Approx. Gross Internal Area 630 Sq Ft - 58.53 Sq M



Fourth Floor

For Illustration Purposes Only - Not To Scale

This floor plan should be used as a general outline for guidance only and does not constitute in whole or in part an offer or contract. Any intending purchaser or lessee should satisfy themselves by inspection, searches, enquiries and full survey as to the correctness of each statement. Any areas, measurements or distances quoted are approximate and should not be used to value a property or be the basis of any sale or let.

Copyright Morriarti Photography & Design LTD