



Modern Build Two Bedroom and Two Bathroom Apartment  
is a Sought After Development

# QUEENSTOWN ROAD

BATTERSEA, SW11

£895 per week

**BERKSHIRE  
HATHAWAY**  
HOMESERVICES

LONDON

# PROPERTY DETAILS

<b>Guide Price</b> £895 per week	<b>Square Footage</b> 882
<b>Council Tax Band</b> TBC	<b>EPC Rating</b> B

Located in a highly sought after building with porter, this modern build apartments combines practical living with stylish interior.

Encompassing a large lateral space, this home boasts an expansive open plan kitchen and living area, with access to a private terrace. There is also a separate laundry room, family bathroom, large principal bedroom with its own en suite bathroom and a second double bedroom which benefits from access to a rear additional private terrace.

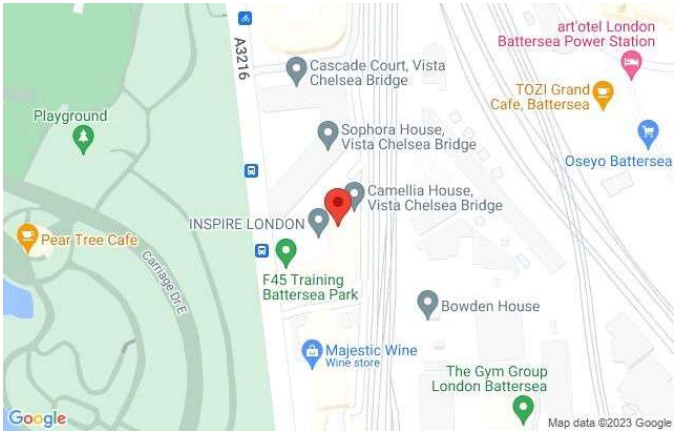
The development itself enjoys the provision of on-site porter, residents' gym and spa area which includes the use of the hydrotherapy pool, sauna and steam room.

Camellia house is located within the Vista development, which benefits to its proximity to the river and Battersea park along with transport access at both Battersea Power Station & Battersea Park

# FEATURES

- Two Bedrooms
- One Reception Room
- Two Bathrooms
- Communal Gardens
- Balcony
- Lift
- Conservatory
- 24 Hour Security

# LOCATION



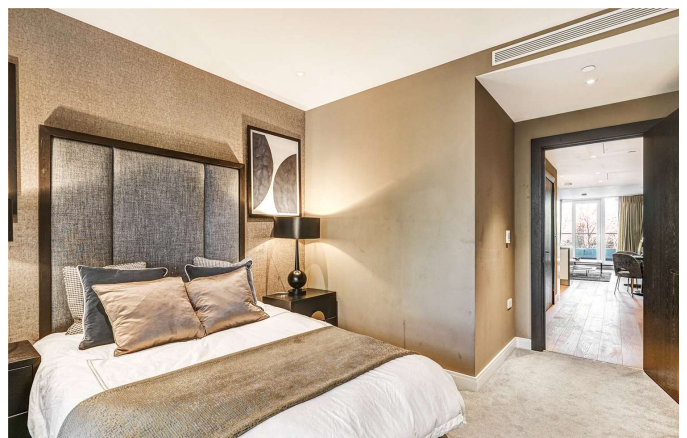
## HYDE PARK LETTINGS

24-25 Albion Street, W2 2AX

020 7262 2030

lettings.hydepark@bhhs-london.com





# FLOORPLAN

