



Fabulous Development Opportunity in Prime  
Gray's Inn Road

# GRAY'S INN ROAD

BLOOMSBURY, WC1X

Asking Price  
£900,000

**BERKSHIRE  
HATHAWAY**  
HOMESERVICES

LONDON

# PROPERTY DETAILS

**Guide Price**

£900,000

**Square Footage**

721

**Council Tax Band**

E

**EPC**

D

**Tenure**

Freehold

DEVELOPMENT OPPORTUNITY - 2 Bedroom with Freehold and Planning for additional Two Bedroom.

A well located two bedroom apartment located on the popular Gray's Inn Road.

The apartment boasts a large eat in kitchen, a spacious separate living room, two well sized double bedrooms including one with its own shower, and finally a further family bathroom.

The Freehold of the building is also included in the sale, as is the roof space, which has planning permission to add a further two bedroom apartment.

Gray's Inn road is located in the heart of Bloomsbury and is also conveniently located for King's Cross St Pancras with its excellent transport links and vibrant boutiques, bars, and restaurants.

## FEATURES

Two Bedrooms

One Reception Room

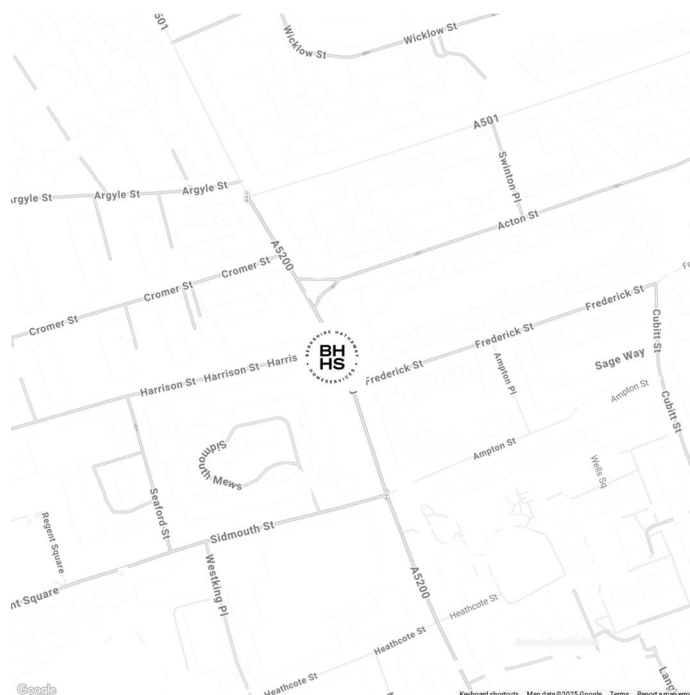
One Bathroom

End of Terrace

Upper Floor

Period

## LOCATION



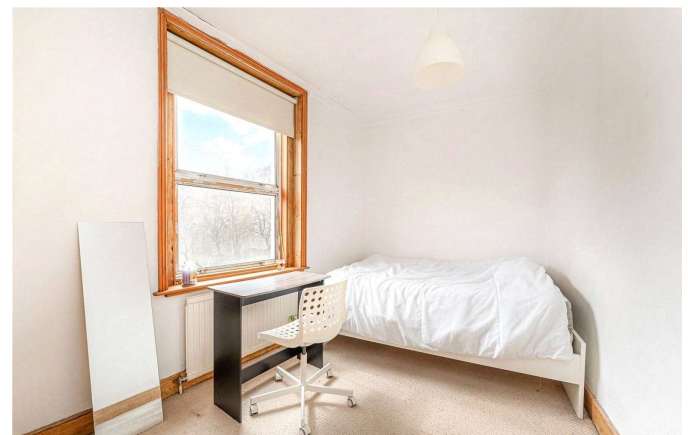
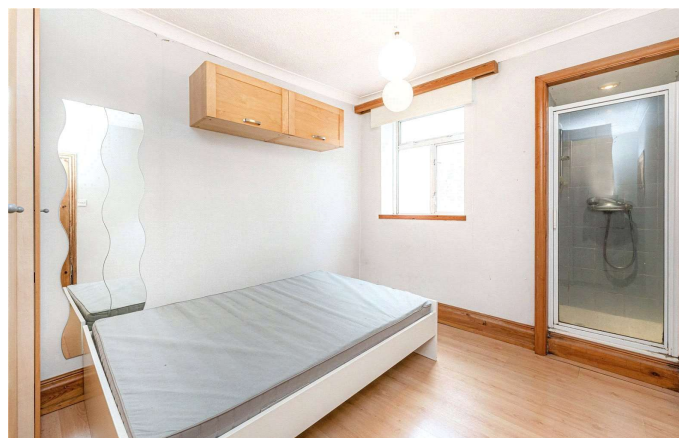
## KINGS CROSS SALES

Unit 4,6 Pancras Square, N1C 4AG

020 7467 2020

[sales.kingscross@bhhs-london.com](mailto:sales.kingscross@bhhs-london.com)

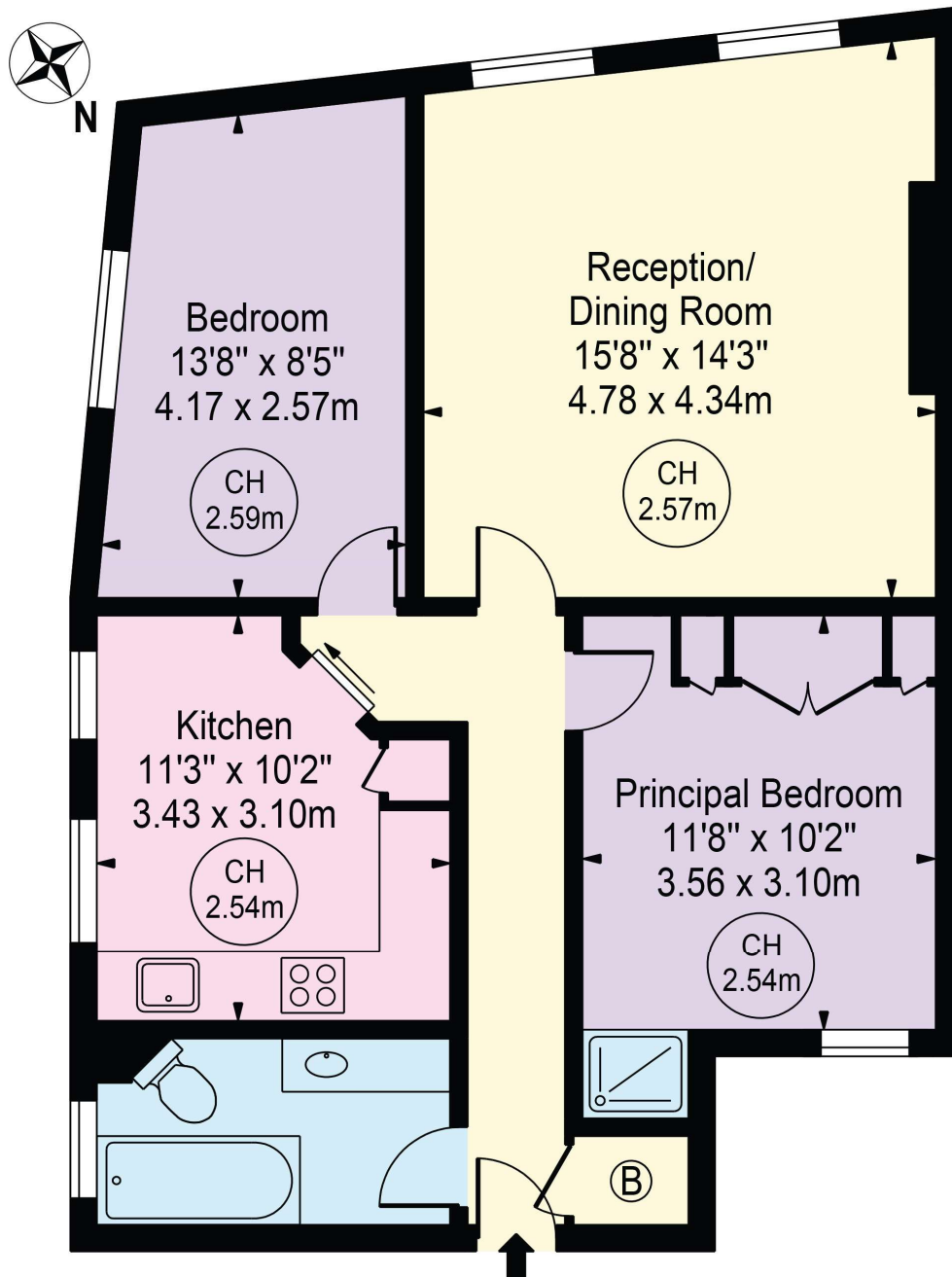




# FLOORPLAN

## Gray's Inn Road

Approx. Gross Internal Area 721 Sq Ft - 66.98 Sq M



### Second Floor

For Illustration Purposes Only - Not To Scale

This floor plan should be used as a general outline for guidance only and does not constitute in whole or in part an offer or contract.  
Any intending purchaser or lessee should satisfy themselves by inspection, searches, enquiries and full survey as to the correctness of each statement.  
Any areas, measurements or distances quoted are approximate and should not be used to value a property or be the basis of any sale or let.

Copyright Morriarti Photography & Design LTD