



A Modern Three Bedroom Apartment In A Sought After Development In Paddington Basin **MERCHANT SQUARE EAST**

—LONDON, W2

- Three Bedrooms
- Two Bathrooms
- Reception Room
- Concierge/Porter, 24 Hour Security, Lift
- Private, Underground Parking
- Energy Rating: B

HYDE PARK & BAYSWATER LETTINGS

24-25 Albion Street, London, W2 2AX

020 7262 2030

lettings.hydepark@bhhs-london.com

BHHSLondon.com

£1,525 p/w (£6,608.33 pcm) LONG LET

MERCHANT SQUARE EAST

- LONDON, W2

We are pleased to offer this stunning interior designed apartment, set within the heart of Paddington Basin and close to the popular West End Quay.

The apartment is situated on the fourteenth floor of this prestigious building which features 24 hour concierge, lift service, and secure underground parking. This apartment comprises spacious living

and entertaining space with a beautiful reception room with superb views over the Grand Union Canal, a modern open plan kitchen, three bedrooms, two bathrooms, and an abundance of storage throughout.

The apartment offers excellent access to transport links such as Paddington Train Station (Bakerloo, Hammersmith & City, Circle, District lines and Heathrow) and Edgware Road (Circle, District and Bakerloo lines) both within a short walk.

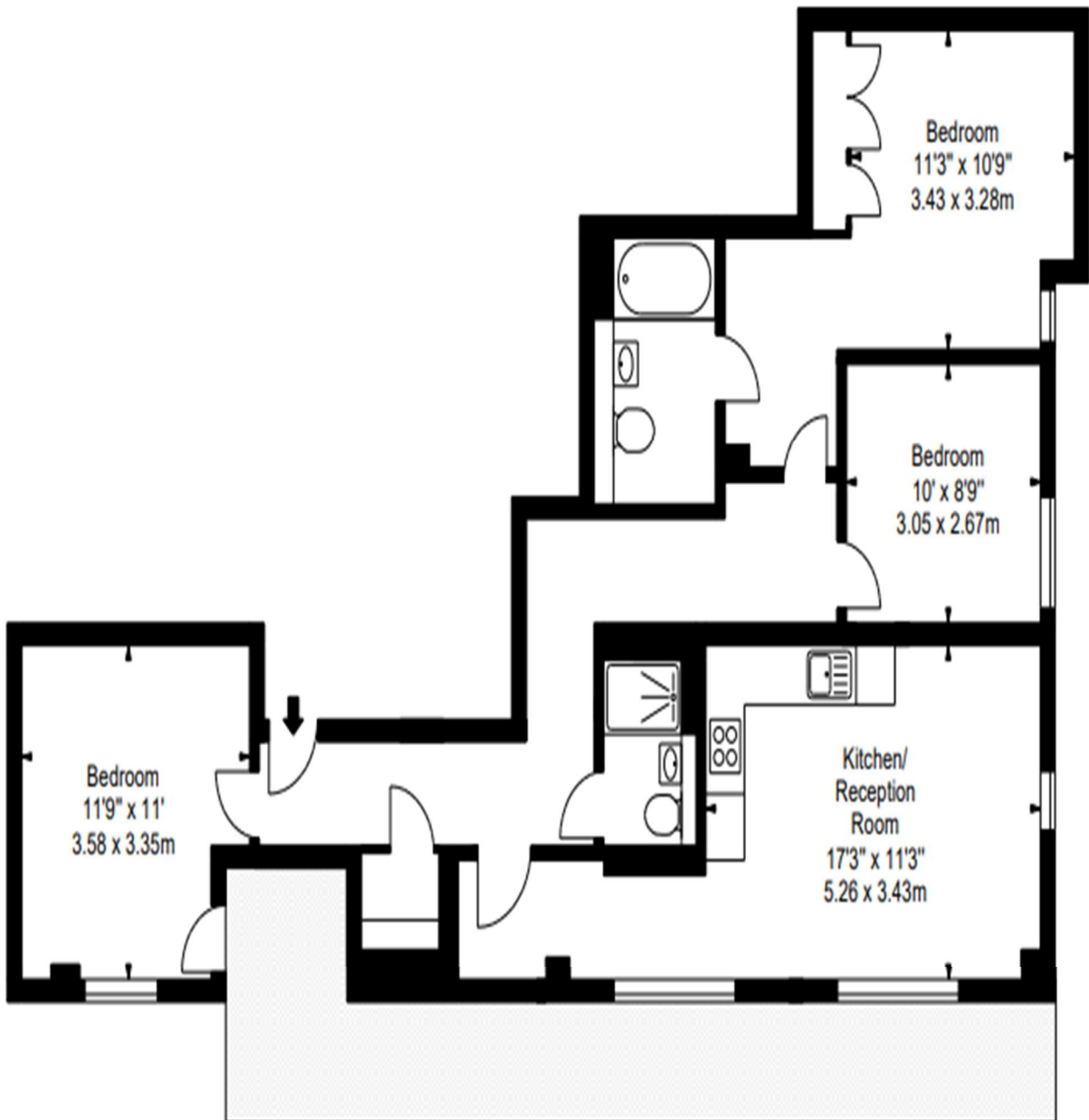
£1,525 p/w (£6,608.33 pcm) LONG LET

EPC RATING - B





©2020 BHH Affiliates, LLC. An independently owned and operated franchisee of BHH Affiliates, LLC. Berkshire Hathaway HomeServices and the Berkshire Hathaway HomeServices symbol are registered service marks of Columbia Insurance Company, a Berkshire Hathaway affiliate.® Berkshire Hathaway HomeServices Kay & Co is a trading name of Oastcrown Properties Limited. Registered in England No. 1647019. Registered Office: 24-25 Albion Street, London W2 2AX. Authorized and regulated by the Financial Conduct Authority. A member of the franchise system of BHH Affiliates, LLC. Consumer Protection from Unfair Trading Regulations 2008. These details are for guidance only and complete accuracy cannot be guaranteed. If there is any point, which is of particular importance, verification should be obtained. They do not constitute a contract or part of a contract. All measurements are approximate. No guarantee can be given with regard to planning permissions or fitness for purpose. No apparatus, equipment, fixture or fitting has been tested. Items shown in photographs are NOT necessarily included. Interested Parties are advised to check availability and make an appointment to view before travelling to see a property.



**BERKSHIRE
HATHAWAY**
HomeServices

London
Kay & Co
Marler & Marler