



Two Bedroom with Parking in Luma House

LEWIS CUBITT WALK

KINGS CROSS, N1C

Asking Price
£1,499,950

**BERKSHIRE
HATHAWAY**
HOMESERVICES

LONDON

PROPERTY DETAILS

| | |
|----------------------------------|---------------------------------------|
| Guide Price £1,499,950 | Square Footage 885 |
| Council Tax Band F | EPC B |
| Ground Rent £800 pa | Service Charge £13847.52 pa |
| Tenure Leasehold | |

A spacious two bedroom apartment in the highly sought after and award winning Luma House.

Every element in this boutique development is designed to a high specification and this dual aspect property does not disappoint with two balconies overlooking Lewis Cubitt Park and Coal Drops Yard as well as Jellicoe Gardens.

Parking is offered by separate negotiation.

Residents of Luma also benefit from concierge services and residents' lounge.

Nearby transport links include St. Pancras International and King's Cross Station (Northern, Victoria, Hammersmith & City, Metropolitan, Circle and Piccadilly lines, National Rail) providing frequent services into the City and the West End.Vibrant Coal Drops Yard and Granary Square are also moments away.

FEATURES

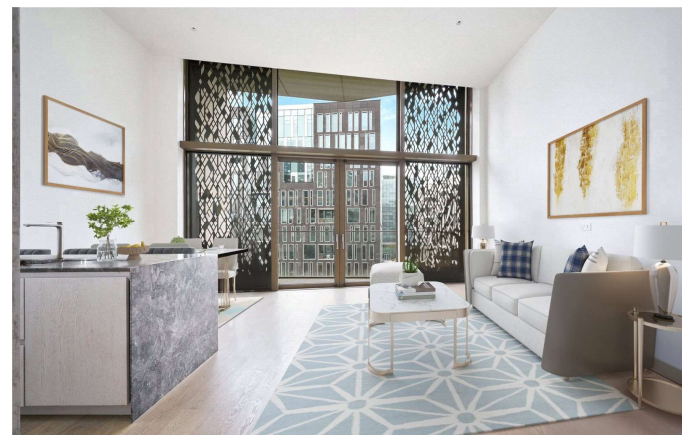
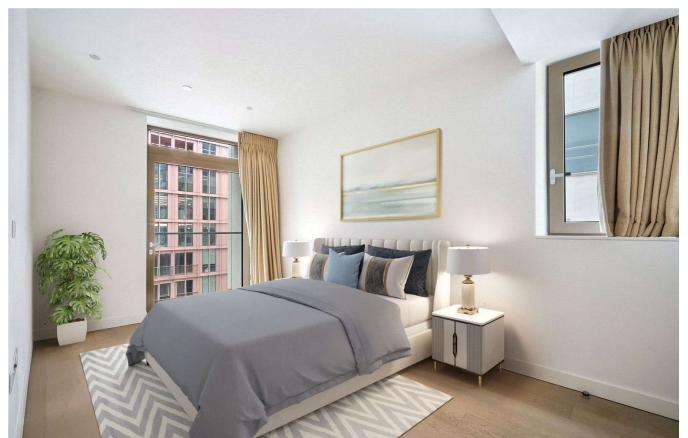
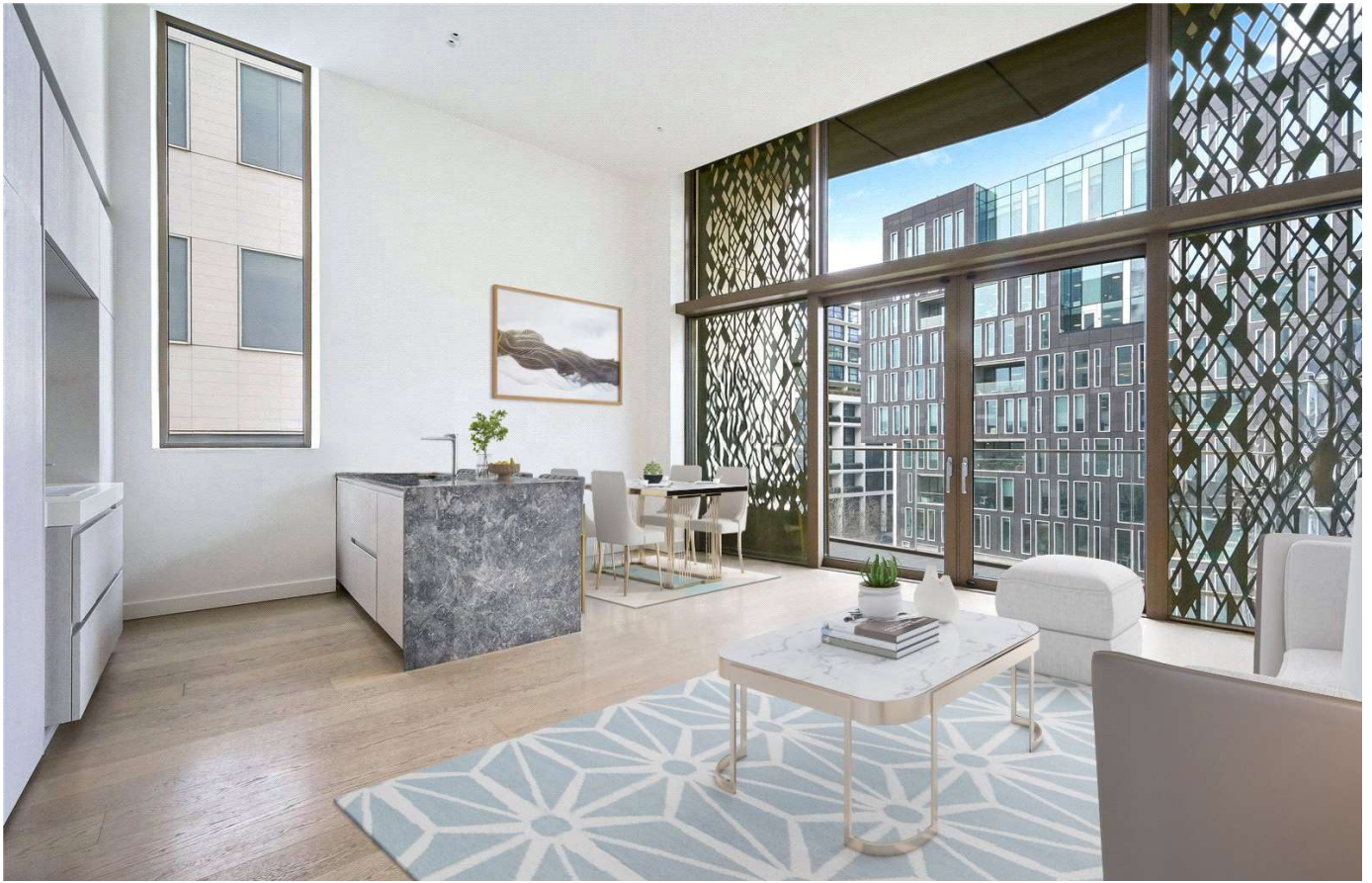
- Two Bedrooms
- One Reception Room
- Two Bathrooms
- Concierge/Porter
- Upper Floor
- Lift
- Balcony
- New Development

LOCATION

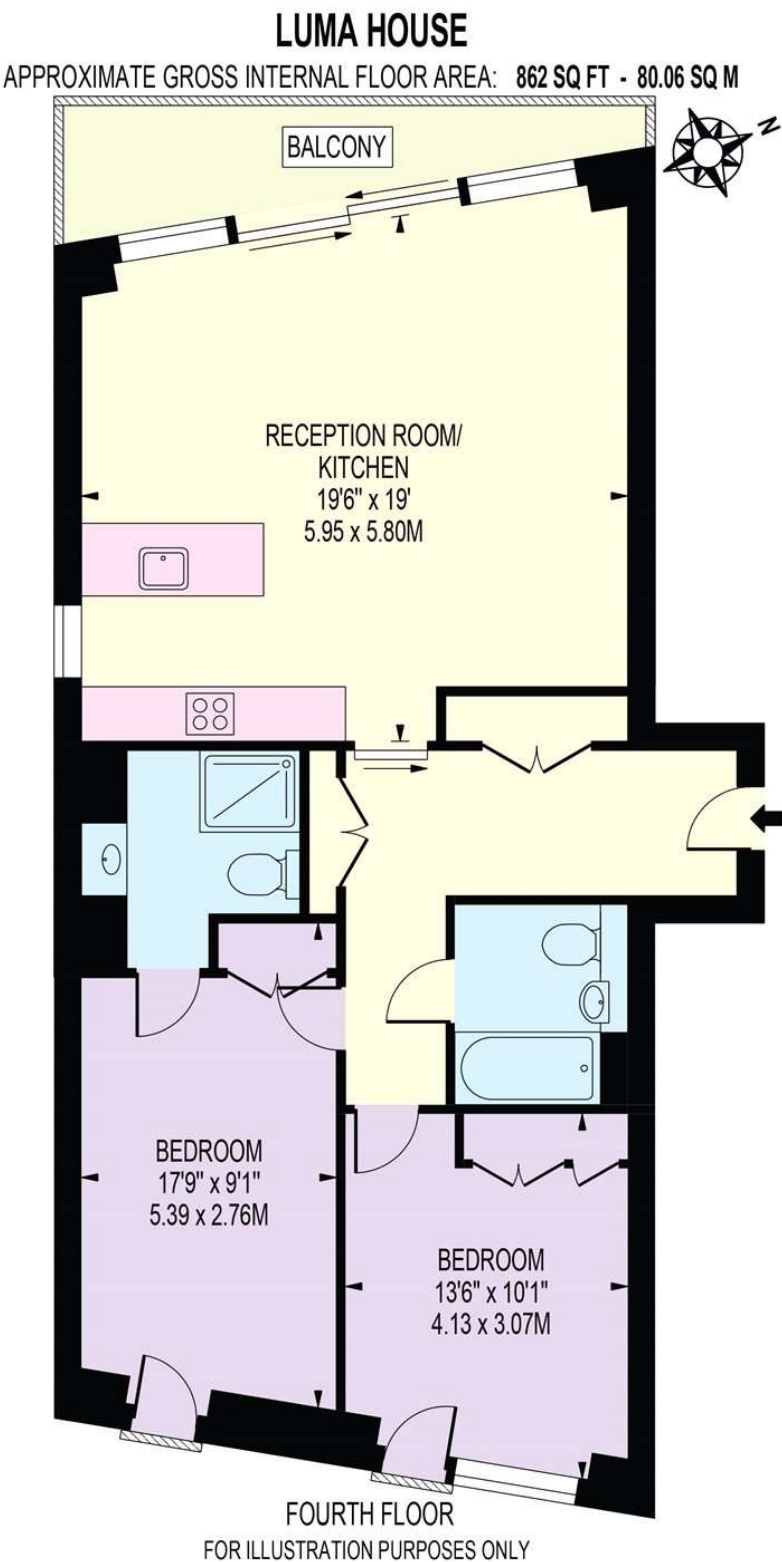


KINGS CROSS SALES
Unit 4,6 Pancras Square, N1C 4AG

020 7467 2020
sales.kingscross@bhhs-london.com



FLOORPLAN



THIS FLOOR PLAN SHOULD BE USED AS A GENERAL OUTLINE FOR GUIDANCE ONLY AND DOES NOT CONSTITUTE IN WHOLE OR IN PART AN OFFER OR CONTRACT.
ANY INTENDING PURCHASER OR LESSEE SHOULD SATISFY THEMSELVES BY INSPECTION, SEARCHES, ENQUIRIES AND FULL SURVEY AS TO THE CORRECTNESS OF EACH STATEMENT.
ANY AREAS, MEASUREMENTS OR DISTANCES QUOTED ARE APPROXIMATE AND SHOULD NOT BE USED TO VALUE A PROPERTY OR BE THE BASIS OF ANY SALE OR LET.