



Fantastic Three Bedroom Apartment in Portered  
Block

# WEYMOUTH STREET

MARYLEBONE, W1W

£1,600 per week

**BERKSHIRE  
HATHAWAY**  
HOMESERVICES

LONDON

# PROPERTY DETAILS

<b>Guide Price</b> £1,600 per week	<b>Square Footage</b> 1,159
<b>Council Tax Band</b> G	<b>EPC Rating</b> C

A stunning three bedroom apartment with two bathroom, a private balcony offering over 1100 sq ft, set within a sought after portered block in nestled between Marylebone and Fitzrovia.

A contemporary three bedroom flat on the third floor (with lift) of this popular portered block. The property benefits from a separate kitchen, 24 Hour Security, and Porter.

## FEATURES

Three Bedrooms
One Reception room
Two Bathrooms
Concierge / Porter
Lift
Furnished
Balcony
Upper Floor

## LOCATION



**MARYLEBONE LETTINGS**  
20A Paddington Street, W1U 5QP

020 7486 6338  
lettings.marylebone@bhhs-london.com

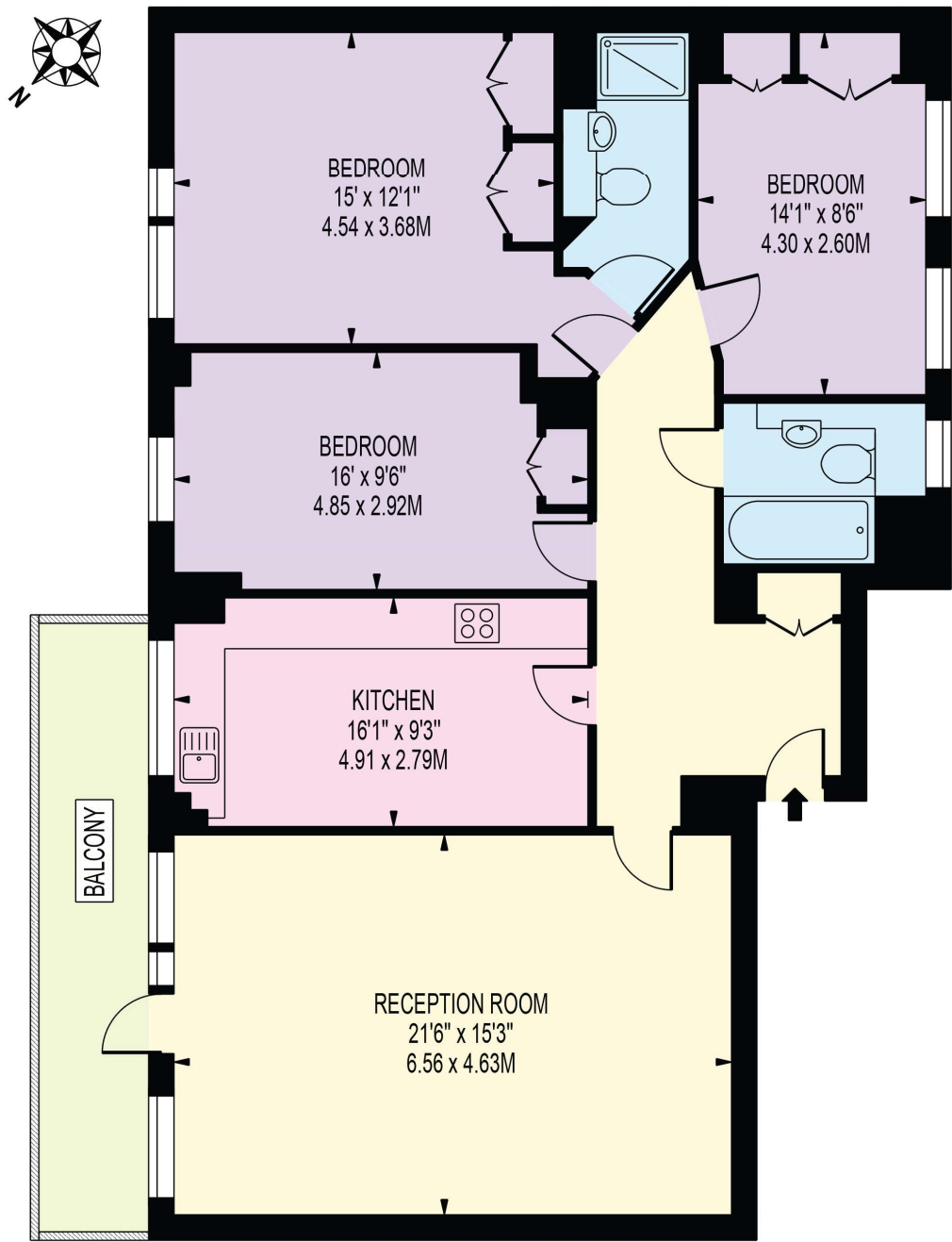




# FLOORPLAN

## WEYMOUTH STREET

APPROXIMATE GROSS INTERNAL FLOOR AREA: 1159 SQ FT - 107.69 SQ M



### THIRD FLOOR

FOR ILLUSTRATION PURPOSES ONLY

THIS FLOOR PLAN SHOULD BE USED AS A GENERAL OUTLINE FOR GUIDANCE ONLY AND DOES NOT CONSTITUTE IN WHOLE OR IN PART AN OFFER OR CONTRACT. ANY INTENDING PURCHASER OR LESSEE SHOULD SATISFY THEMSELVES BY INSPECTION, SEARCHES, ENQUIRIES AND FULL SURVEY AS TO THE CORRECTNESS OF EACH STATEMENT. ANY AREAS, MEASUREMENTS OR DISTANCES QUOTED ARE APPROXIMATE AND SHOULD NOT BE USED TO VALUE A PROPERTY OR BE THE BASIS OF ANY SALE OR LET.