



A Bright and Spacious One Bedroom Apartment in the West Tower of This Well Located Development With Full Porter Service

THE WATER GARDENS

HYDE PARK ESTATE, W2

Asking Price
£535,000

**BERKSHIRE
HATHAWAY**
HOMESERVICES

LONDON

PROPERTY DETAILS

Guide Price	Square Footage
£535,000	521

Council Tax Band	EPC
E	To be confirmed

Ground Rent	Service Charge
£400 pa	£7,296 pa

Tenure
Leasehold

This 6th floor apartment has exceptional rooftop views to the south and offers the incoming purchaser an opportunity to renovate a property to their own style and tastes.

FEATURES

One Bedroom

One Reception Room

One Bathroom

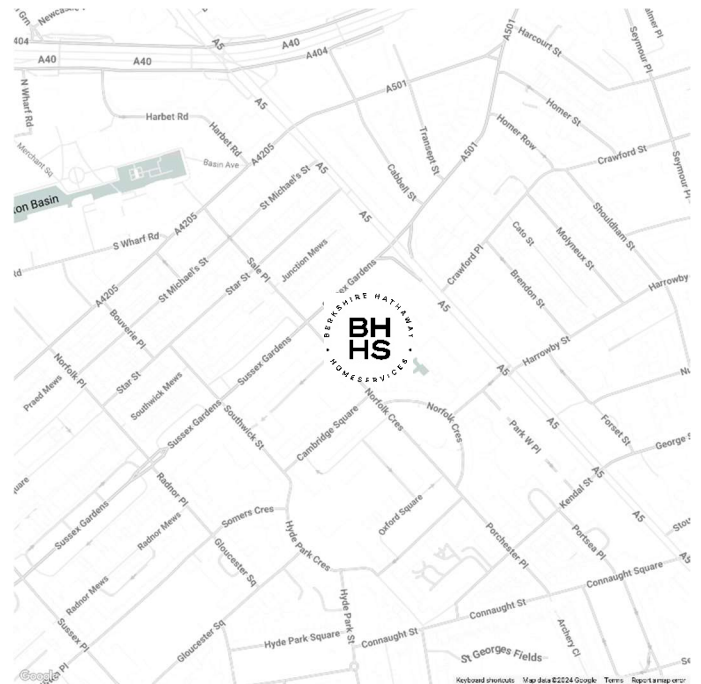
Concierge, Porter

Communal Gardens

Modern

Upper Floor

LOCATION



HYDE PARK SALES

24-25 Albion Street, W2 2AX

020 7262 2030

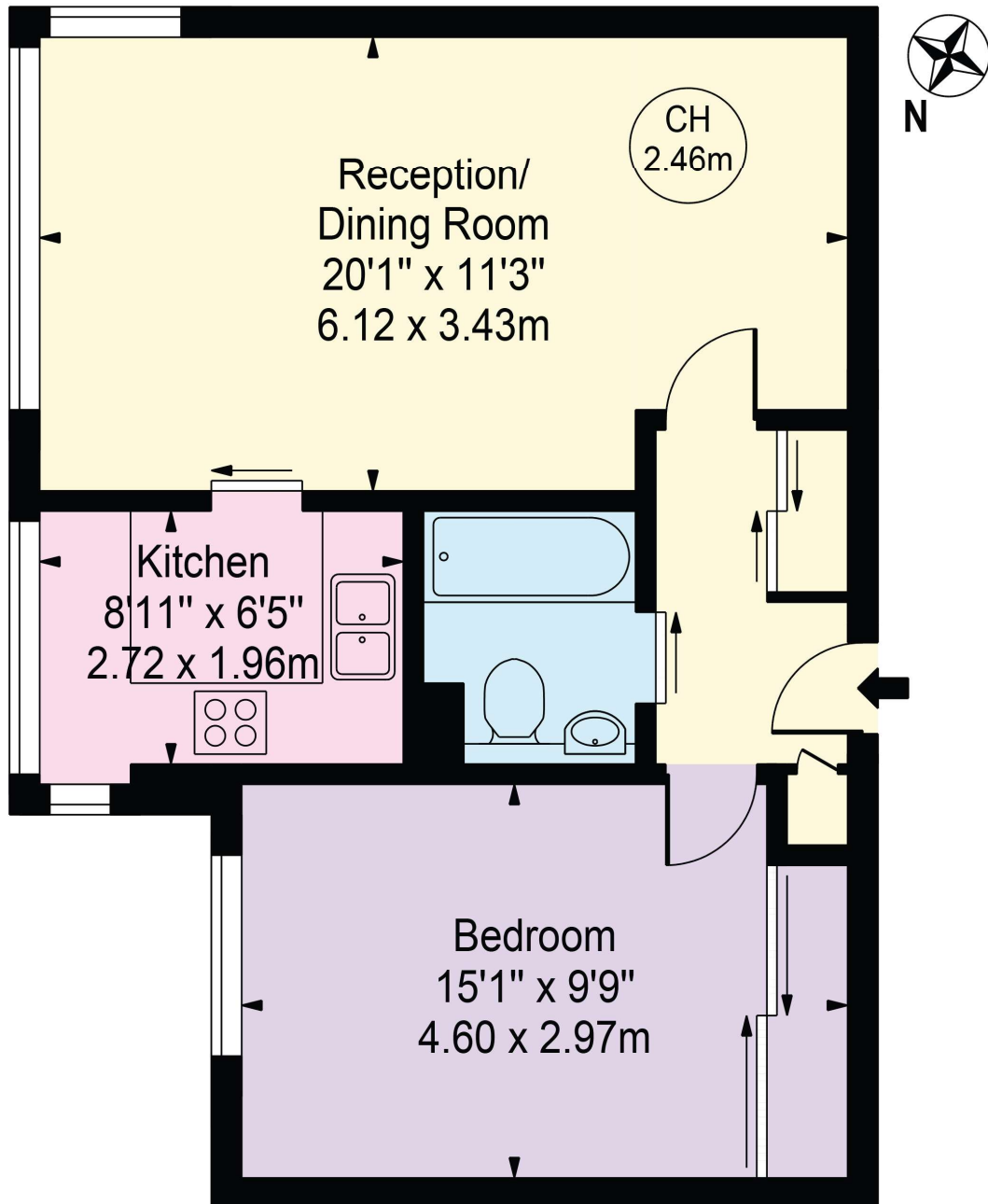
sales.hydepark@bhhs-london.com



FLOORPLAN

The Water Gardens

Approx. Gross Internal Area 515 Sq Ft - 47.85 Sq M



Sixth Floor

For Illustration Purposes Only - Not To Scale

This floor plan should be used as a general outline for guidance only and does not constitute in whole or in part an offer or contract. Any intending purchaser or lessee should satisfy themselves by inspection, searches, enquiries and full survey as to the correctness of each statement. Any areas, measurements or distances quoted are approximate and should not be used to value a property or be the basis of any sale or let.

Copyright Morriarti Photography & Design LTD