



A Recently Refurbished First and Second Floor Maisonette

# KINGS ROAD

CHELSEA, SW3

£1,696.15 per week

**BERKSHIRE  
HATHAWAY**  
HOMESERVICES

LONDON

# PROPERTY DETAILS

<b>Guide Price</b> £1,696.15 per week	<b>Square Footage</b> 1363
<b>Council Tax Band</b> TBC	<b>EPC Rating</b> D

A bright and spacious two bedroom maisonette arranged over the first and second floor of this period building in Chelsea. The apartment has its own private entrance leading up to the first floor .

The apartment is finished in a contemporary style with wood flooring in the main living area. Air conditioning units installed throughout.

Situated a short walk from Sloane Square and South Kensington and well positioned for all the shops and restaurants along the Kings Road.

# FEATURES

Two Bedrooms
Two Bathrooms
Maisonette
Residents Parking
First Floor
Furnished
Private Entrance
Air Conditioning

# LOCATION

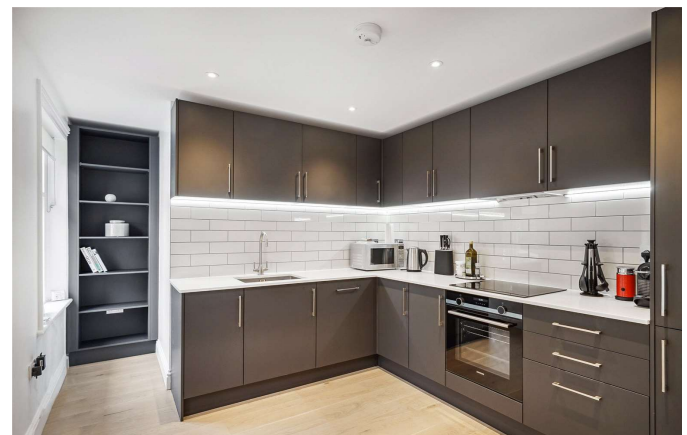
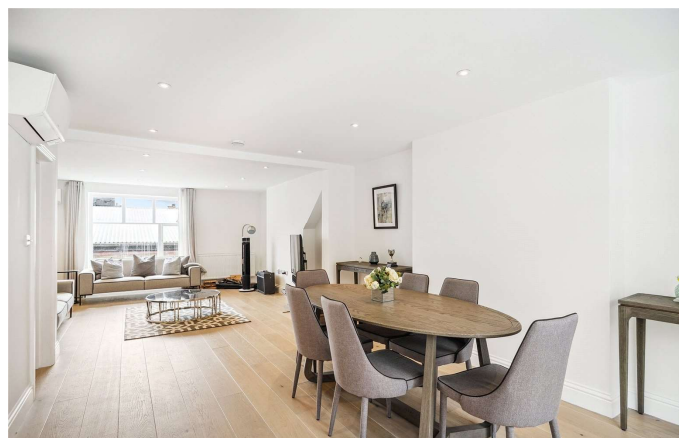


## KNIGHTSBRIDGE LETTINGS

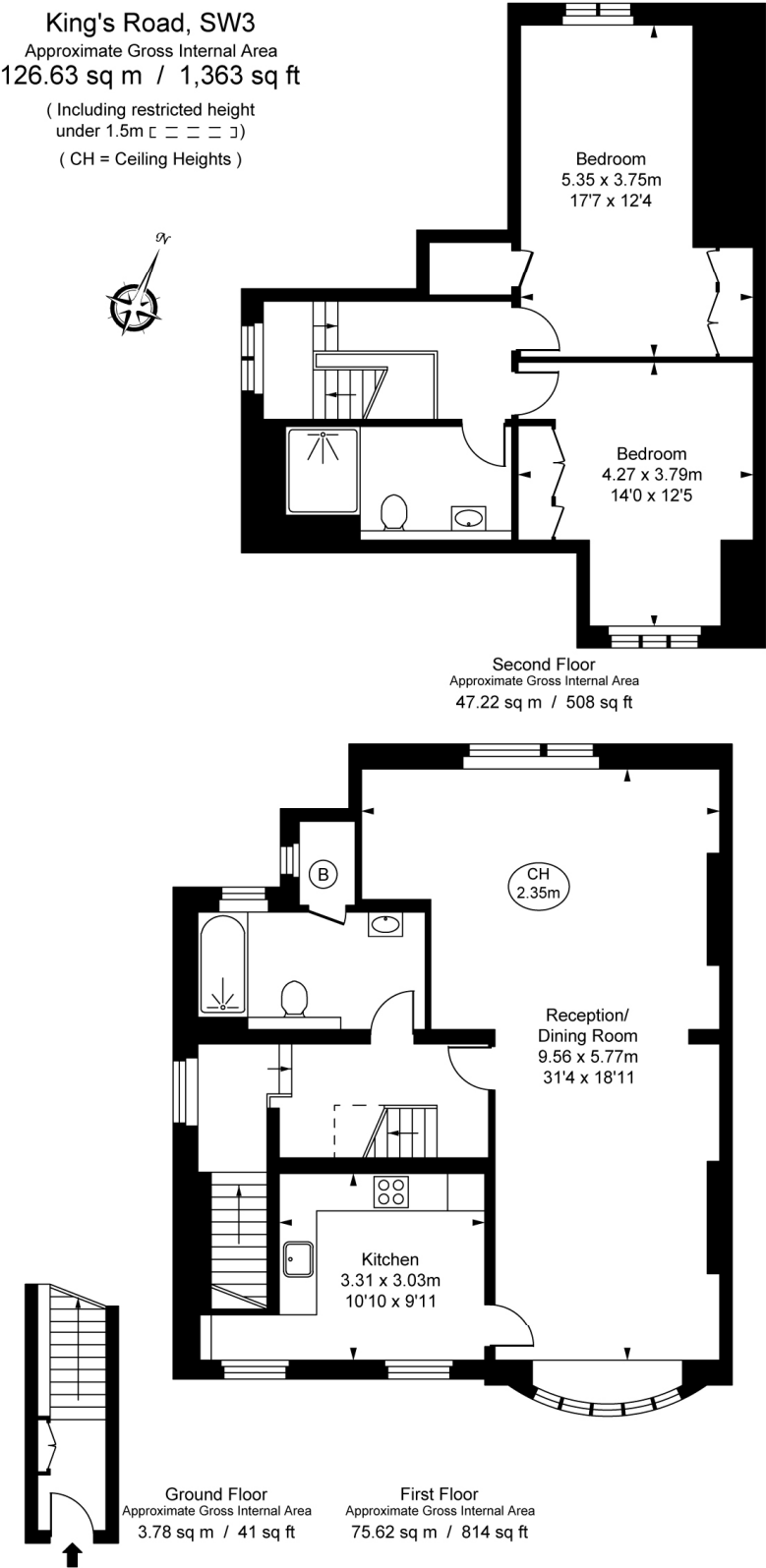
55-57 SLOANE AVENUE, SW3 3DH

020 7235 9641

lettings.knightsbridge@bhhs-london.com



# FLOORPLAN



This plan is not to scale. It is for guidance and not for valuation purposes.  
All measurements and areas are approximate only, and have been prepared in accordance with the current edition of the RICS Code of Measuring Practice.  
© Fulham Performance