



Second Floor Apartment Moments from Sloane Square

D'OYLEY STREET

BELGRAVIA, SW1X

£1,400 per week

**BERKSHIRE
HATHAWAY**
HOMESERVICES

LONDON

PROPERTY DETAILS

Guide Price £1,400 per week	Square Footage 1,030	A bright, west facing second floor apartment (with lift) in this sought after address near Sloane Square
Council Tax Band G	EPC Rating C	The apartment is well arranged living space and comprises two double bedrooms, two bathrooms, reception room , kitchen and lift.
		D'Oyle Street runs parallel to Sloane Street and is moments from Sloane Square and the Kings Road.
		Unfurnished

FEATURES

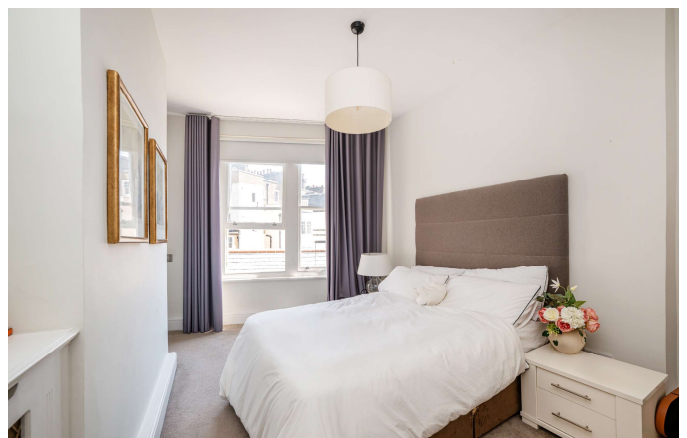
Two Bedrooms
One Reception Room
Two Bathrooms
Residents Parking
Upper Floor
Concierge/Porter
Lift

LOCATION



KNIGHTSBRIDGE LETTINGS
55-57 SLOANE AVENUE, SW3 3DH

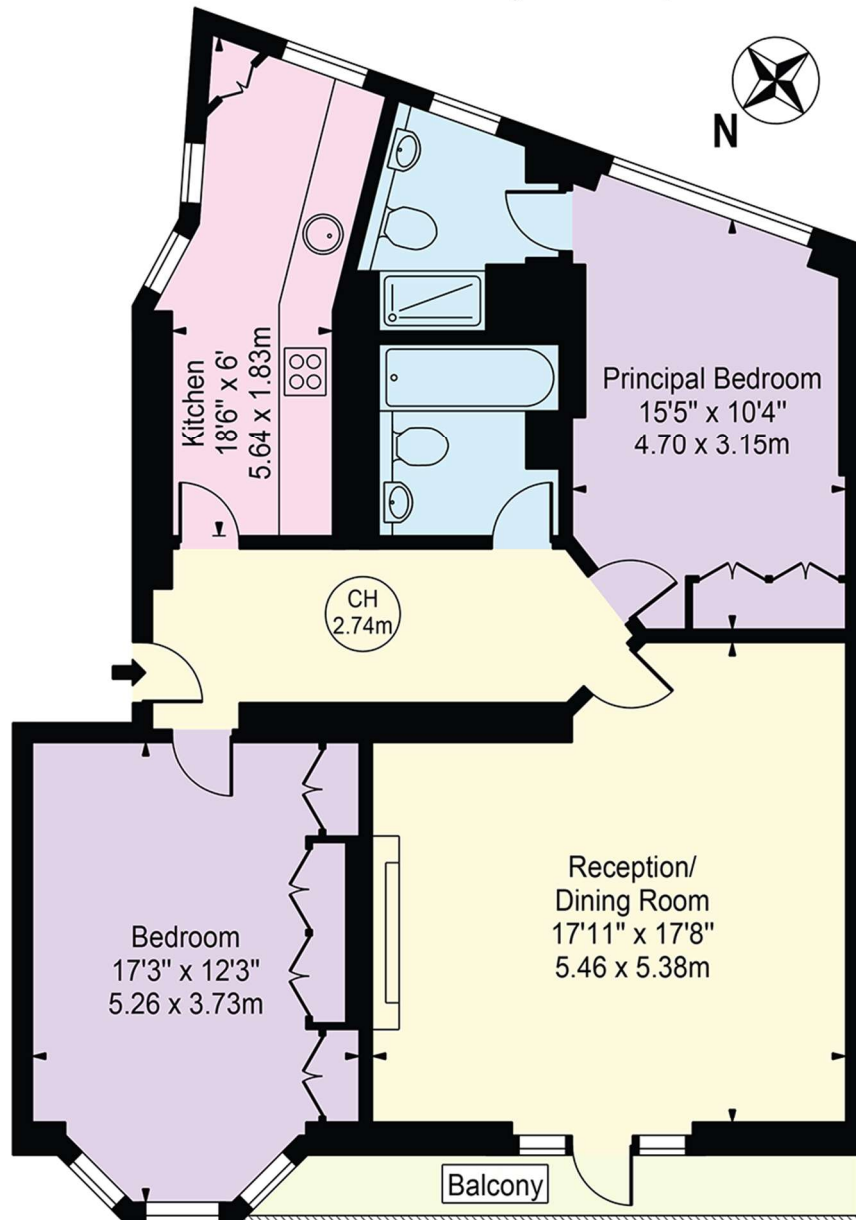
020 7235 9641
lettings.knightsbridge@bhhs-london.com



FLOORPLAN

Sloane Gate Mansions

Approx. Gross Internal Area 1030 Sq Ft - 95.69 Sq M
Approx. External Area Of Balcony 49 Sq Ft - 4.55 Sq M



Second Floor

For Illustration Purposes Only - Not To Scale

This floor plan should be used as a general outline for guidance only and does not constitute in whole or in part an offer or contract.
Any intending purchaser or lessee should satisfy themselves by inspection, searches, enquiries and full survey as to the correctness of each statement.
Any areas, measurements or distances quoted are approximate and should not be used to value a property or be the basis of any sale or let.
Copyright Morriarti Photography & Design LTD