



An Elegant Period One-Bedroom Apartment in One of
knightsbridge's Most Sought-After Garden Squares

ENNISMORE GARDENS

SOUTH KENSINGTON, SW7

Asking Price
£1,850,000

**BERKSHIRE
HATHAWAY**
HOMESERVICES

LONDON

PROPERTY DETAILS

Guide Price £1,850,000	Square Footage 736
Council Tax Band G	EPC C
Ground Rent TBC	Service Charge TBC
Tenure TBC	

An elegant and well-maintained one-bedroom apartment located on the second floor (with lift) of a sought-after period building overlooking one of Knightsbridge's most prestigious gardens.

The apartment is presented in excellent condition, boasting high ceilings and expansive living space for a one-bedroom apartment.

A semi-open plan kitchen and living area is the heart of the home, with an abundance of natural light that fills the room and offers south-facing views over the communal gardens. This spacious room provides ample space for dining and relaxation.

This apartment also features a large double bedroom, which benefits from its own en-suite bathroom.

Ennismore Gardens is ideally located to the south of Hyde Park, moments from Harrods and some of the area's most sought-after eateries, coffee houses, bars, and world-class shopping. The stunning apartment is situated at the rear of the building, with beautiful south-facing views over the gardens.

FEATURES

- One Bedroom
- One Reception Room
- One Bathroom
- Residents Parking
- Upper Floor
- High Ceilings
- Communal Gardens

LOCATION



KNIGHTSBRIDGE SALES
55-57 SLOANE AVENUE, SW3 3DH

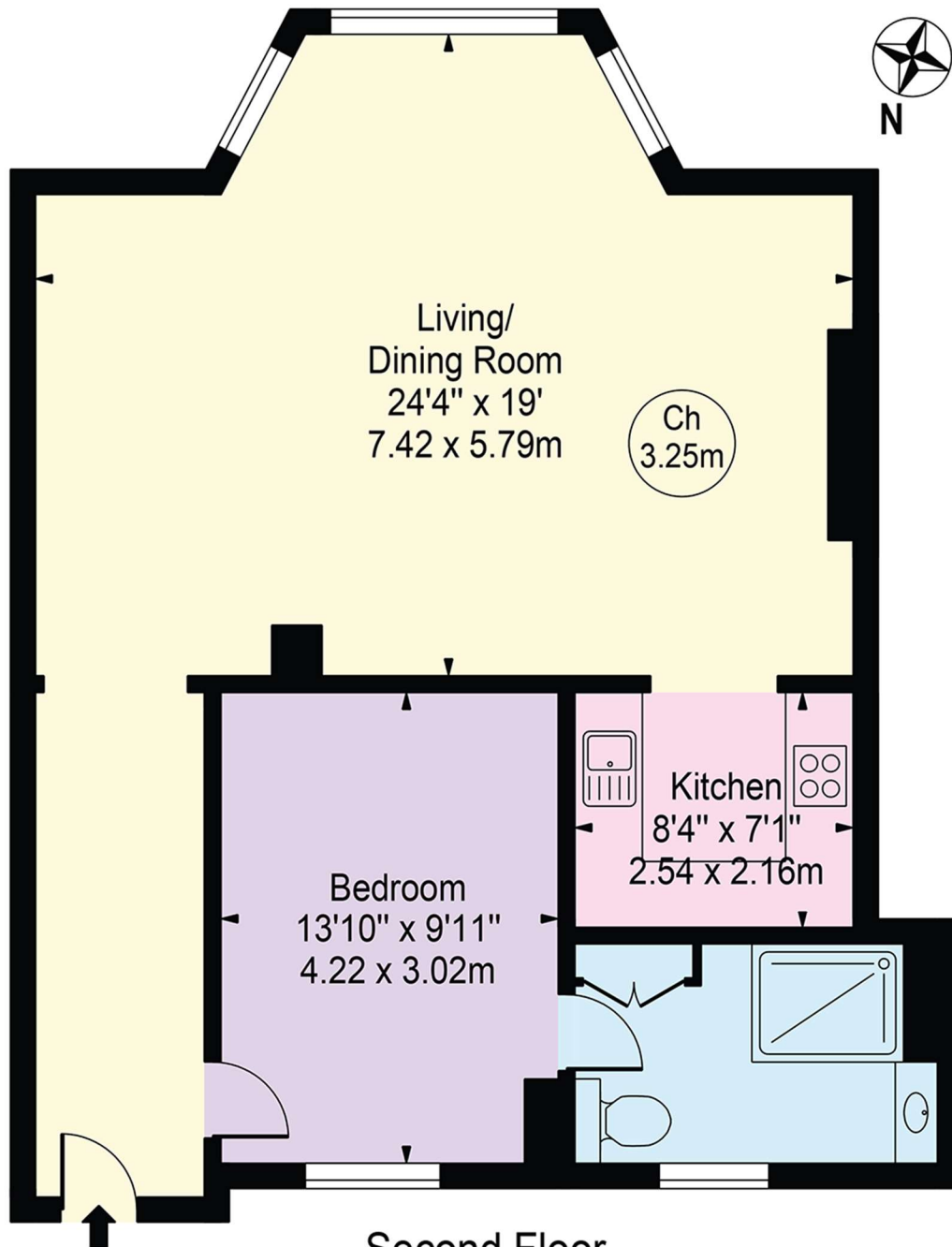
020 7235 9641
sales.knightsbridge@bhhs-london.com



FLOORPLAN

Ennismore Gardens

Approx. Gross Internal Area 766 Sq Ft - 71.16 Sq M



For Illustration Purposes Only - Not To Scale

This floor plan should be used as a general outline for guidance only and does not constitute in whole or in part an offer or contract.
Any intending purchaser or lessee should satisfy themselves by inspection, searches, enquiries and full survey as to the correctness of each statement.
Any areas, measurements or distances quoted are approximate and should not be used to value a property or be the basis of any sale or let.

Copyright Morriarti Photography & Design LTD