



BRIGHT TWO BEDROOM MAISONETTE

# KINGS ROAD

CHELSEA, SW3

£1,015.38 per week

**BERKSHIRE  
HATHAWAY**  
HOMESERVICES

LONDON

# PROPERTY DETAILS

<b>Guide Price</b> £1,015.38 per week	<b>Square Footage</b> 840	<p>A super contemporary style second and third floor maisonette (no lift) apartment in the heart of Chelsea. The property offers excellent space with two double bedrooms , bathroom, reception room with wood flooring and open plan kitchen.</p> <p>The property is well located for the shops and restaurants in the area and a short walk from Sloane Square underground.</p> <p>£120 pcm utility charge for electricity and gas.</p> <p>Available 16th of May 2025.</p>
<b>Council Tax Band</b> F	<b>EPC Rating</b> C	

## FEATURES

Two Bedrooms
One Bathroom
Wood Flooring
Furnished
Maisonette

## LOCATION



**KNIGHTSBRIDGE LETTINGS**  
55-57 SLOANE AVENUE, SW3 3DH

020 7235 9641  
lettings.knightsbridge@bhhs-london.com

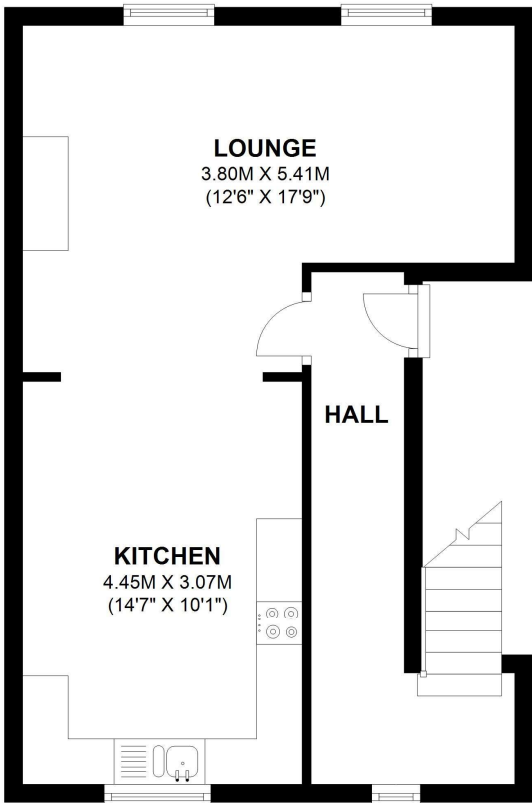




# FLOORPLAN

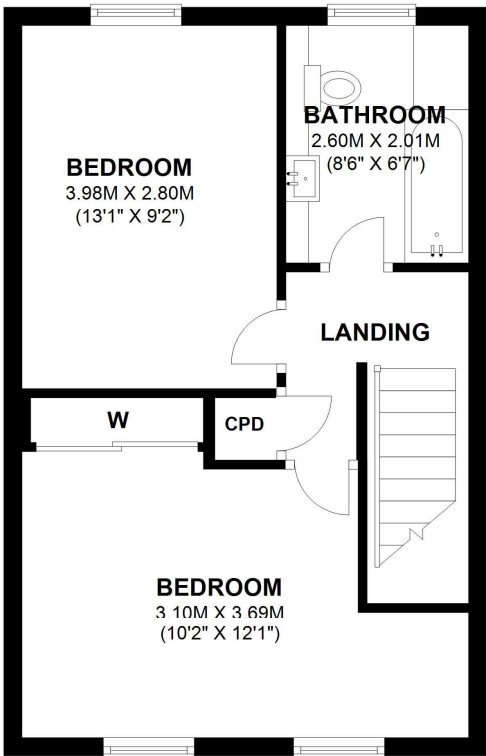
## SECOND FLOOR

APPROX. 39.7 SQ. METRES (426.9 SQ. FEET)



## THIRD FLOOR

APPROX. 38.4 SQ. METRES (413.5 SQ. FEET)



TOTAL AREA: APPROX. 78.1 SQ. METRES (840.4 SQ. FEET)