



BASIL MANSIONS

KNIGHTSBRIDGE, SW3

PROPERTY DETAILS

Guide Price £925,000	Square Footage 703 Approx	Ground Rent N/A
-------------------------	------------------------------	--------------------

EPC Rating D	Council Tax Band TBC	Service Charge £4,470 PA
-----------------	-------------------------	-----------------------------

Tenure
Share of Leasehold

DESCRIPTION

Located within this popular portered mansion building is this two bedroom apartment, benefitting from plenty of natural light and decent ceiling heights throughout. Basil Mansions is an attractive red brick building constructed in the 1890s, in the heart of Knightsbridge, moments from Harrods and the open spaces of Hyde Park.

The apartment, which extends to 703 Sq Ft internally, is presented in good condition throughout, would make a wonderful rental investment or pied à terre. and has a share of the freehold.

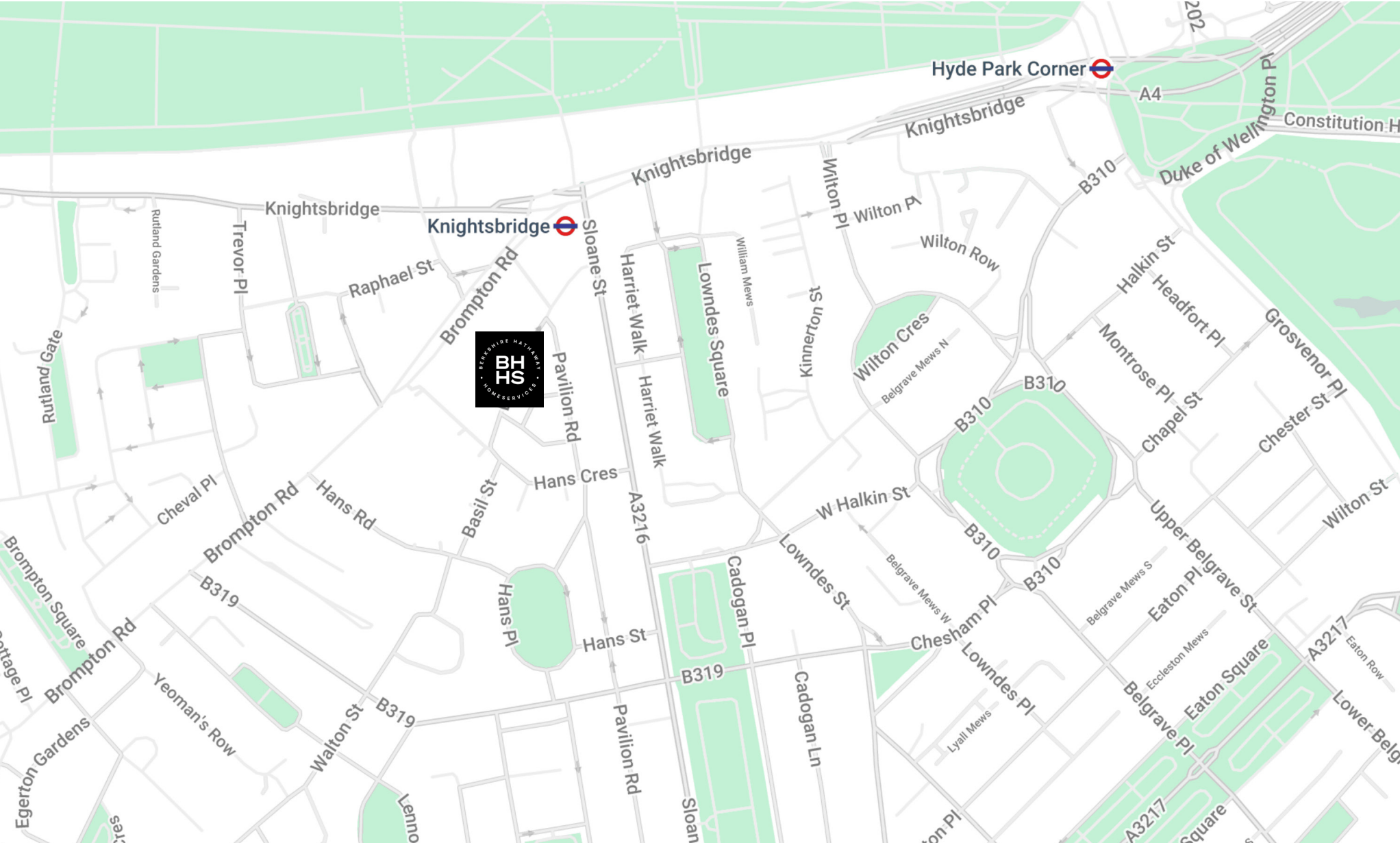
FEATURES

Two Bedrooms

One Reception Room

One Bathroom

Concierge / Porter



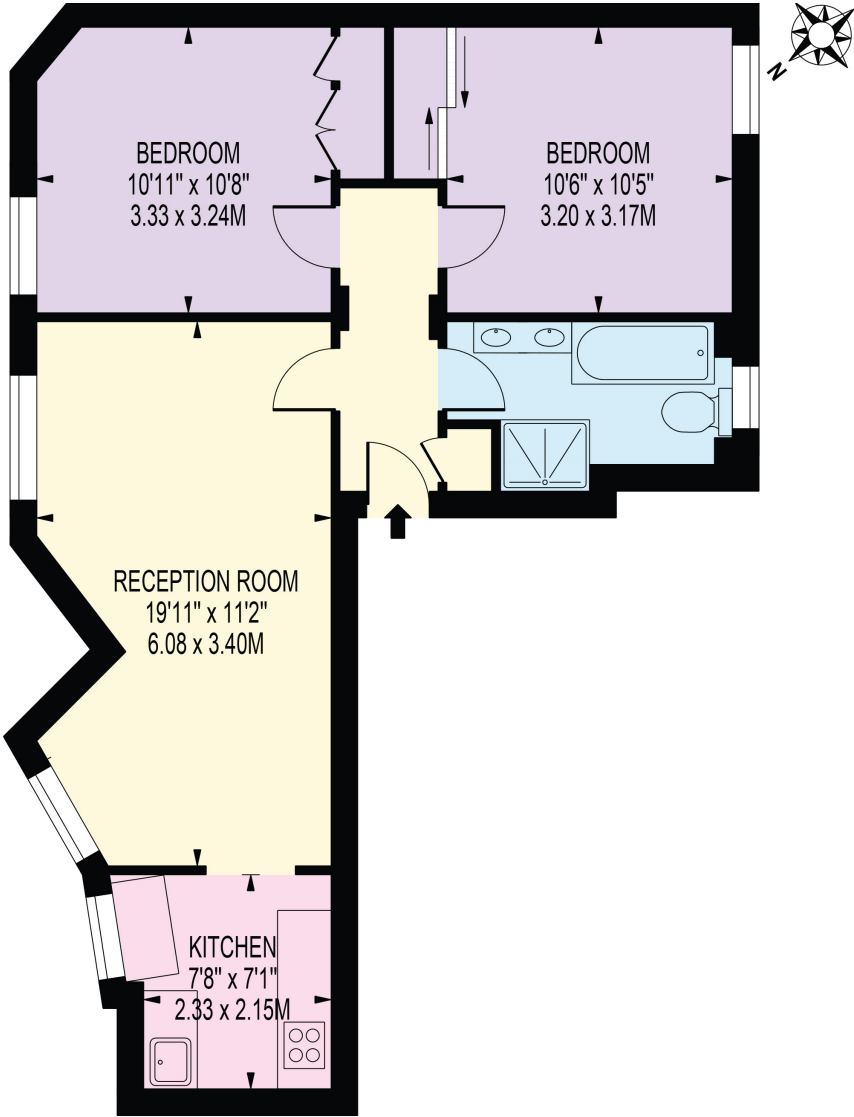






FLOOR PLAN - BASIL MANSIONS

APPROXIMATE GROSS INTERNAL FLOOR AREA 65.3 SQ M / 703 SQ FT



LOWER GROUND FLOOR
FOR ILLUSTRATION PURPOSES ONLY

**BERKSHIRE
HATHAWAY**
HOMESERVICES

LONDON

KNIGHTSBRIDGE SALES

55-57 SLOANE AVENUE, SW3 3DH

020 7235 9641

sales.knightsbridge@bhhs-london.com



Consumer Protection from Unfair Trading Regulations 2008. These details are for guidance only and complete accuracy cannot be guaranteed. If there is any point, which is of particular importance, verification should be obtained. They do not constitute a contract or part of a contract. All measurements are approximate. No guarantee can be given with regard to planning permissions or fitness for purpose. No apparatus, equipment, fixture or fitting has been tested. Items shown in photographs are NOT necessarily included. Interested Parties are advised to check availability and make an appointment to view before travelling to see a property. A member of the franchise system of BHH Affiliates, LLC