



A Spacious Four Bedroom Family Home in the Heart of
Hyde Park

PORCHESTER PLACE

HYDE PARK, W2

Asking Price
£2,200,000

**BERKSHIRE
HATHAWAY**
HOMESERVICES

LONDON

PROPERTY DETAILS

Guide Price £2,200,000	Square Footage 1,679
Council Tax Band H	EPC D
Ground Rent £25 pa	Service Charge £125 pa
Tenure Leasehold 107 years remaining	

A spacious four bedroom house in the heart of the Hyde Park Estate. The accommodation comprises a double bedroom, eat in kitchen and shower room on the ground floor, large reception room, double bedroom with en-suite and guest WC on the first floor, and two further en-suite double bedrooms on the top floor.

Porchester Place is ideally situated in leafy Connaught Village with numerous boutique shops, restaurants and cafes and all the amenities of the West End, Notting Hill and Marylebone nearby. The local transport links are outstanding with Marble Arch (Central Line) and Paddington Stations (multiple Underground lines, National Rail, Heathrow Express and the Elizabeth Line, all located within a short walk of the property.

FEATURES

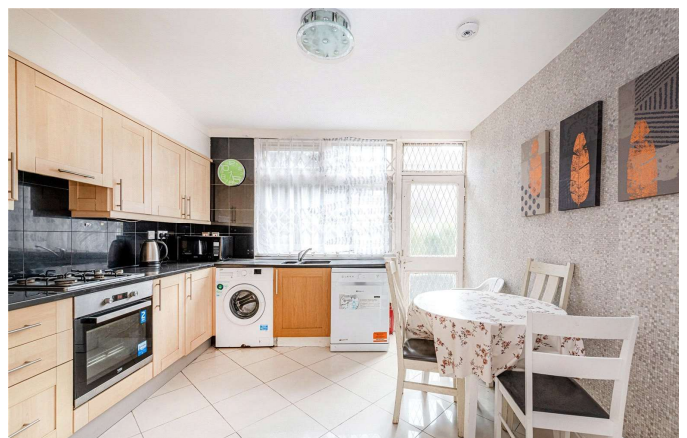
- Three Bedroom
- One Reception Room
- Four Bathrooms
- Modern
- Terraced
- House

LOCATION



HYDE PARK SALES
24-25 Albion Street, W2 2AX

020 7262 2030
sales.hydepark@bhhs-london.com



FLOORPLAN

Porchester Place, W2

Approximate Gross Internal Floor Area : 1679 sq ft / 156 sq m

