



A FANTASTIC RENTAL INVESTMENT WITH A
SUNNY BALCONY

SLOANE AVENUE

CHELSEA, SW3

Asking Price
£535,000

**BERKSHIRE
HATHAWAY**
HOMESERVICES

LONDON

PROPERTY DETAILS

Guide Price £535,000	Square Footage 315
Council Tax Band D	EPC D
Ground Rent £25	Service Charge £4300
Tenure Leasehold	

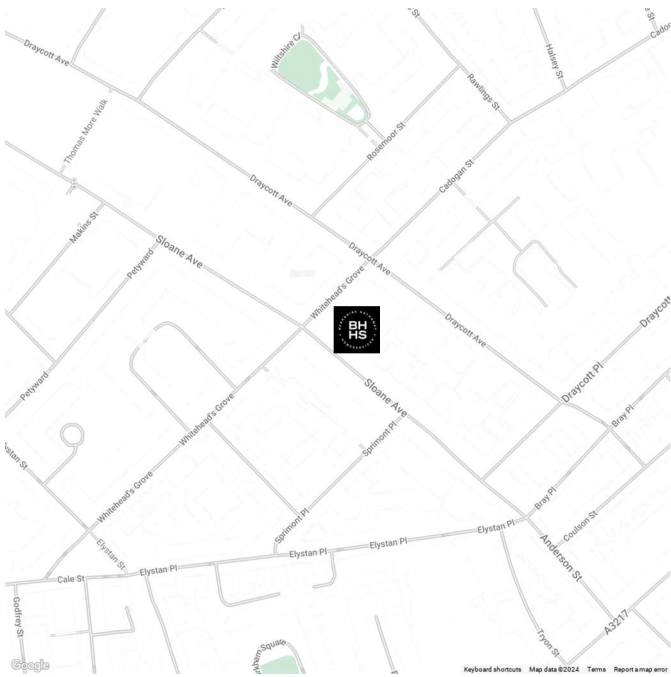
A wonderfully bright studio apartment on the sixth floor of this popular portered building in the heart of Chelsea. The flat benefits from a south west facing balcony with wonderful views over the Chelsea roof tops and beyond. The flat itself has been recently refurbished and has a sliding partition that enables the living and sleeping areas to be separated. The flat would make an ideal rental investment or pied à terre.

Sloane Avenue Mansions is at the southern end of Sloane Avenue, within moments of all the amenities of King's Road and Sloane Square.

FEATURES

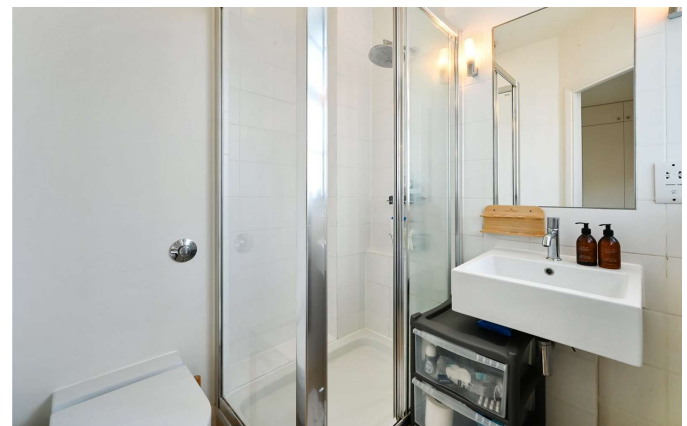
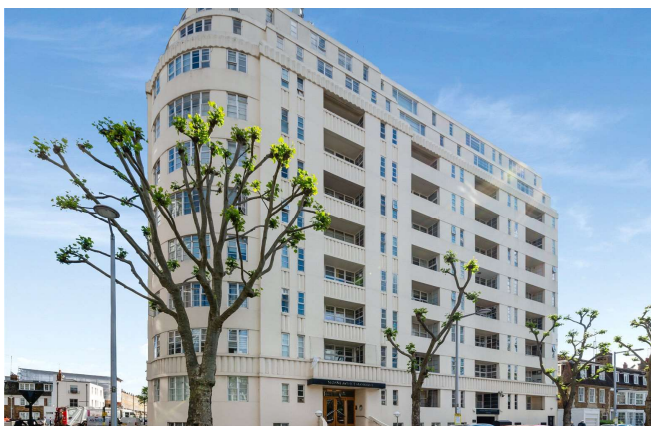
- Studio Flat
- One Reception
- One Bathroom
- Concierge/ Porter
- 24 Hour Security
- Lift
- Balcony

LOCATION



KNIGHTSBRIDGE SALES
55-57 SLOANE AVENUE, SW3 3DH

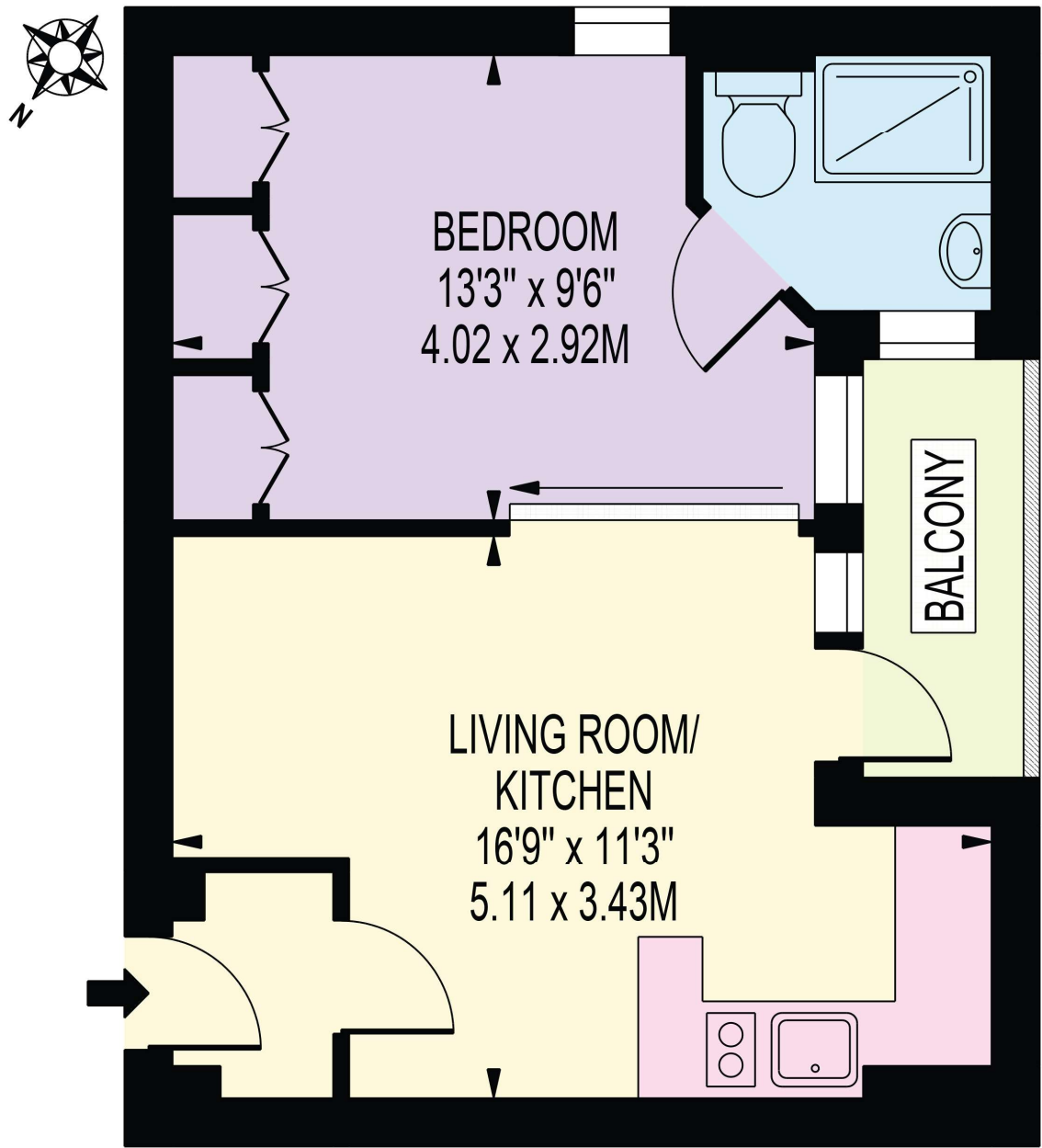
020 7235 9641
sales.knightsbridge@bhhs-london.com



FLOORPLAN

SLOANE AVENUE MANSIONS

APPROXIMATE GROSS INTERNAL FLOOR AREA: 315 SQ FT - 29.25 SQ M



SIXTH FLOOR

FOR ILLUSTRATION PURPOSES ONLY

THIS FLOOR PLAN SHOULD BE USED AS A GENERAL OUTLINE FOR GUIDANCE ONLY AND DOES NOT CONSTITUTE IN WHOLE OR IN PART AN OFFER OR CONTRACT. ANY INTENDING PURCHASER OR LESSEE SHOULD SATISFY THEMSELVES BY INSPECTION, SEARCHES, ENQUIRIES AND FULL SURVEY AS TO THE CORRECTNESS OF EACH STATEMENT. ANY AREAS, MEASUREMENTS OR DISTANCES QUOTED ARE APPROXIMATE AND SHOULD NOT BE USED TO VALUE A PROPERTY OR BE THE BASIS OF ANY SALE OR LET.