



BRIGHT TWO BEDROOM APARTMENT IN BELGRAVIA

EATON PLACE

BELGRAVIA, SW1X

£1,695 per week

**BERKSHIRE
HATHAWAY**
HOMESERVICES

LONDON

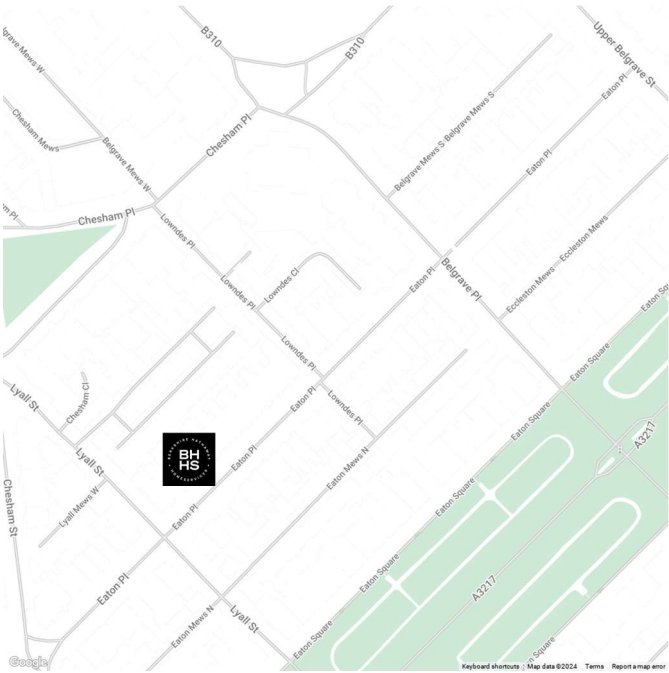
PROPERTY DETAILS

Guide Price £1,695 per week	Square Footage 937	Elegant two bedroom apartment on the second floor (with lift) of this well maintained period building in one of Belgravia's most renowned streets. The apartment offers unhindered views down Eaton Place.
Council Tax Band G	EPC Rating C	Accommodation comprises two double bedrooms, ensuite bathroom with shower, guest shower room, reception room with wood flooring, entrance hall and kitchen.
		Situated a short walk from Sloane Square underground station (Circle and District lines) and Sloane Street,
		Live in caretaker. Unfurnished.
		End of Feb

FEATURES

Two Bedrooms
One Reception Room
Two Bathrooms
Residents Parking
Unfurnished
Concierge/ Porter
Lift
Air Cooling

LOCATION



KNIGHTSBRIDGE LETTINGS
55-57 SLOANE AVENUE, SW3 3DH

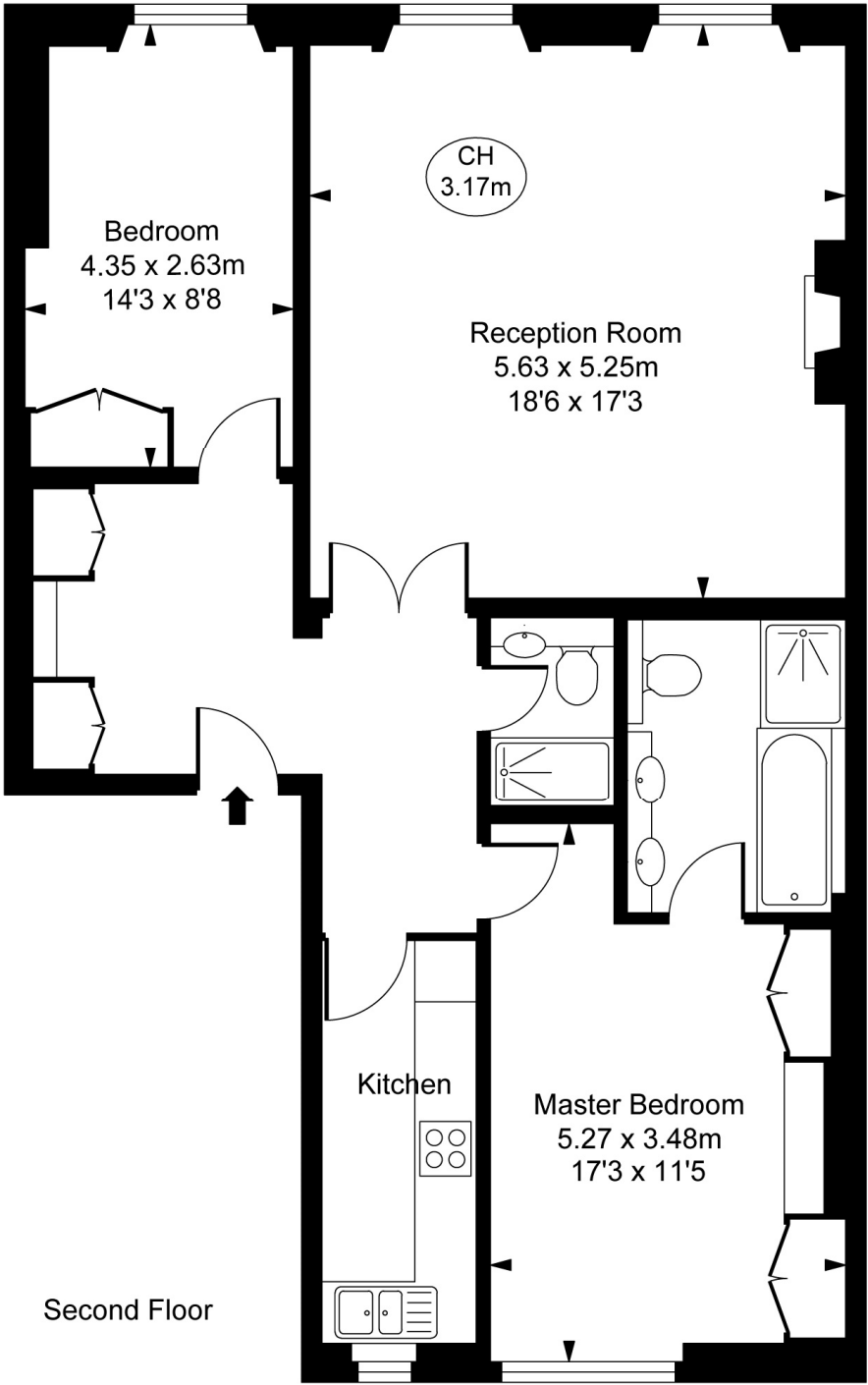
020 7235 9641
lettings.knightsbridge@bhhs-london.com



FLOORPLAN



Eaton Place, SW1X
Approximate Gross Internal Area
87.04 sq m / 937 sq ft
(CH = Ceiling Heights)



Second Floor

This plan is not to scale. It is for guidance and not for valuation purposes.
All measurements and areas are approximate only, and have been prepared in accordance with the current edition of the RICS Code of Measuring Practice.
© Fulham Performance