



A Spacious Portered Lateral Apartment in the  
Heart of Knightsbridge

**SLOANE STREET**

SW1X

£995 per week

**BERKSHIRE  
HATHAWAY**  
HOMESERVICES

LONDON

# PROPERTY DETAILS

<b>Guide Price</b> £995 per week	<b>Square Footage</b> 786
<b>Council Tax Band</b> G	<b>EPC Rating</b> D

Presenting a stunning, luminous, and spacious two-bedroom apartment, ideally positioned on the seventh floor of a prestigious portered block in the heart of Knightsbridge. This residence offers both convenience and a touch of modern luxury with the added benefit of a lift.

This expansive lateral space boasts a large reception room that is perfect for relaxation and entertainment, separate fully fitted kitchen, two generously sized double bedrooms and two well-appointed bathrooms, providing ample room for comfortable living. The stylish interiors and abundance of natural light create an inviting and welcoming atmosphere throughout.

Located just a short stroll away from Knightsbridge underground station and Sloane Square, this prime location offers exceptional connectivity and convenience. Immerse yourself in the vibrant energy of these renowned areas, renowned for their upscale shopping destinations, fine dining establishments, and world-class retail experiences. Indulge in the best that Knightsbridge has to offer, right at your doorstep.

## FEATURES

Two Bedrooms
Two Bathrooms
Furnished
Concierge/ Porter
Lift

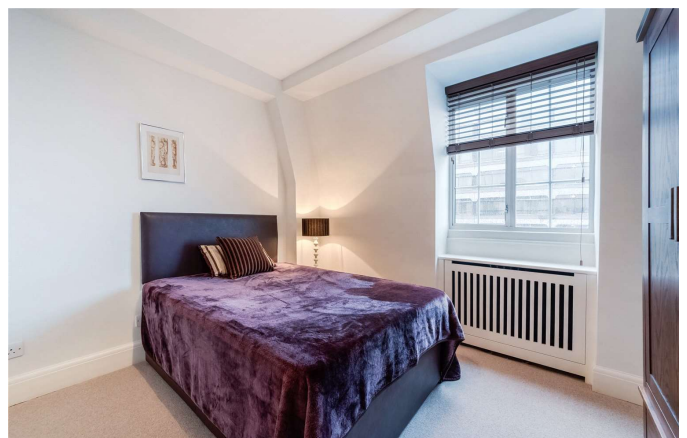
## LOCATION



**KNIGHTSBRIDGE LETTINGS**  
55-57 SLOANE AVENUE, SW3 3DH

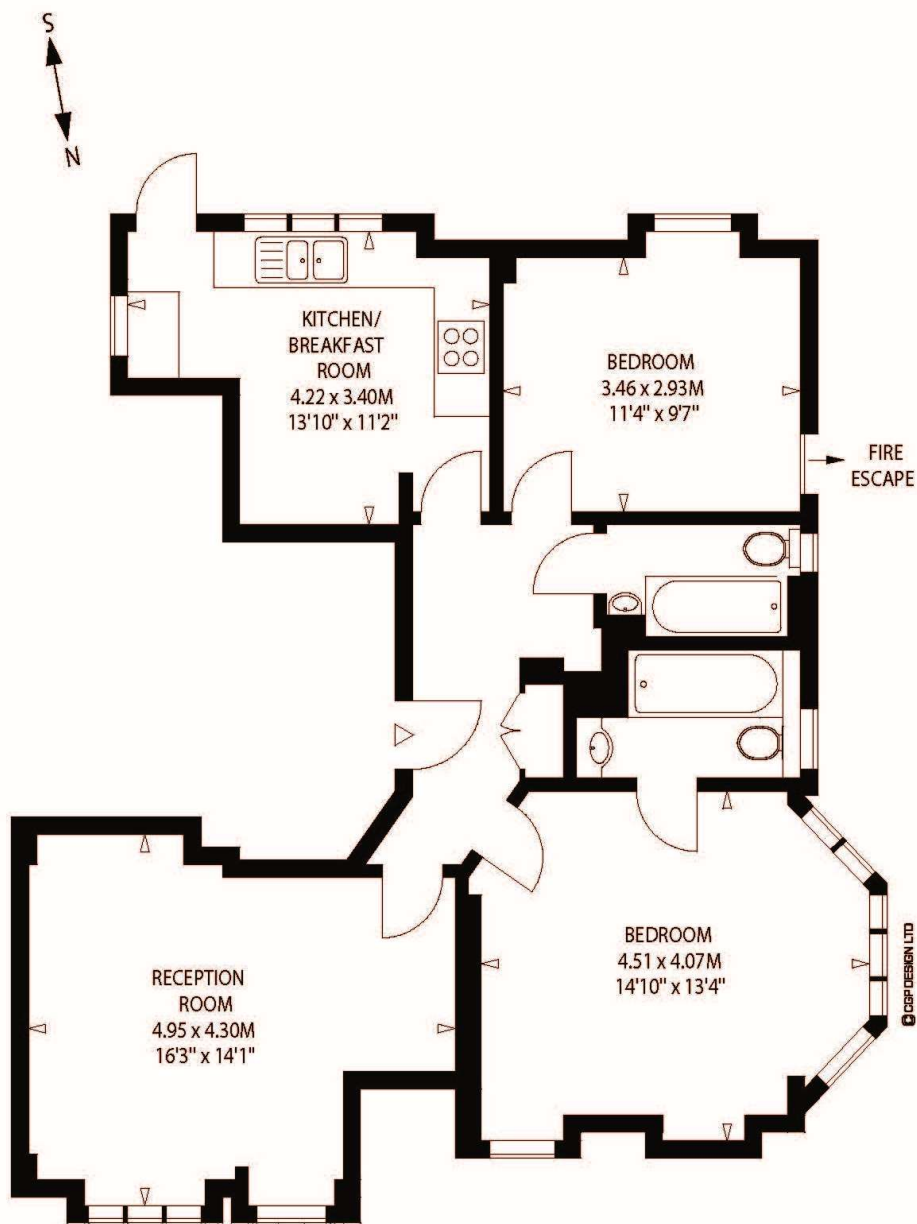
020 7235 9641  
lettings.knightsbridge@bhhs-london.com





# FLOORPLAN

24 KNIGHTSBRIDGE COURT,  
SLOANE STREET, SW1  
Approximate gross internal area  
73 sq m / 786 sq ft



SEVENTH FLOOR

Illustration for identification purposes only, not to scale  
All measurements are maximum, and includes wardrobes and window bays where applicable  
CGP Design Tel:020 3177 1177