



A Beautifully Refurbished Warehouse Style One
Bedroom Apartment

GREAT TITCHFIELD STREET

MARYLEBONE, W1W

£1,550 per week

**BERKSHIRE
HATHAWAY**
HOMESERVICES

LONDON

PROPERTY DETAILS

Guide Price £1,550 per week	Square Footage 671
Council Tax Band E	EPC Rating C

A beautifully refurbished warehouse style one bedroom apartment located in the heart of Fitzrovia. The property benefits from wood flooring throughout, an open plan kitchen to reception room with exposed brickwork, double bedroom and a contemporary bathroom.

It is ideally located moments from Oxford Circus and Goodge Street Underground Stations, the shops and restaurants of Market Place and is only a short walk to the open spaces of Regents Park.

FEATURES

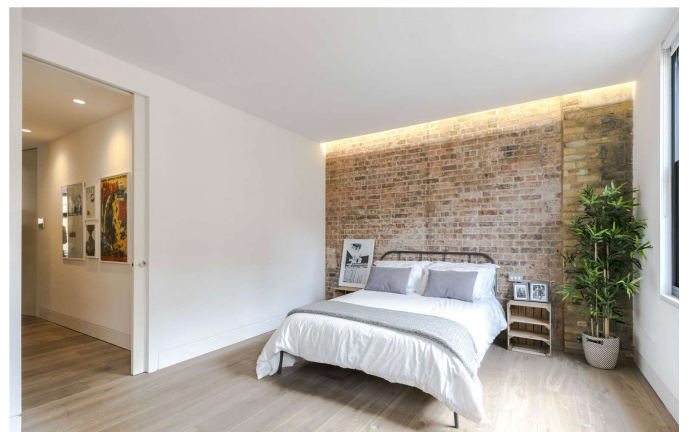
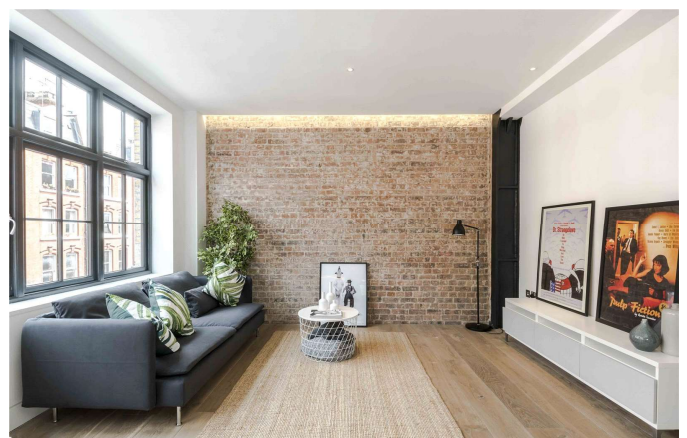
- One Bedroom
- One Reception Room
- One Bathroom
- Upper Floor

LOCATION



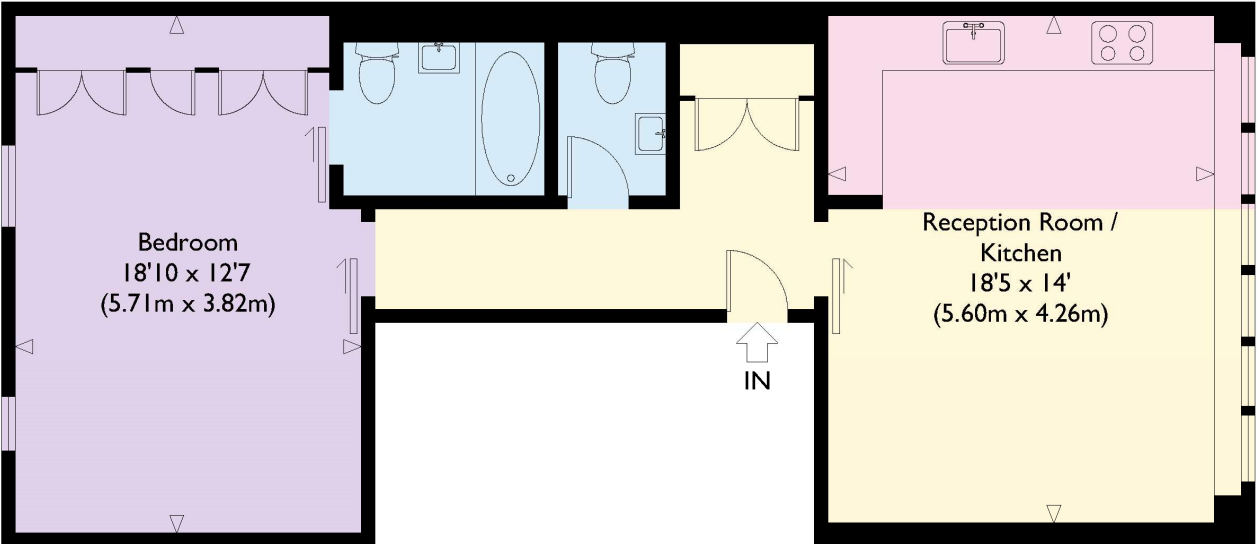
MARYLEBONE LETTINGS
20A Paddington Street, W1U 5QP

020 7486 6338
lettings.marylebone@bhhs-london.com



FLOORPLAN

The Print Works



Second Floor

Approximate Gross Internal Floor Area : 671 sq ft / 62.3 sq m
Illustration for identification purposes only, measurements are approximate, not to scale.