



A Two Bedroom Share-Of-Freehold Apartment

# HYDE PARK GARDENS

HYDE PARK, W2

Asking Price  
£1,100,000

**BERKSHIRE  
HATHAWAY**  
HOMESERVICES

LONDON

# PROPERTY DETAILS

<b>Guide Price</b> £1,100,000	<b>Square Footage</b> 915
<b>Council Tax Band</b> G	<b>EPC</b> E
<b>Service Charge</b> £2,500 pa	<b>Tenure</b> Share of Freehold

A spacious two bedroom, two bathroom share-of-freehold apartment situated within a striking white stucco building directly opposite Hyde Park and with exclusive access to stunning communal gardens. The property is in excellent condition throughout and further benefits from access to an un-demised patio garden.

Hyde Park Gardens is an exclusive address in W2, on the northern edge of Hyde Park.

# FEATURES

Two Bedrooms
One Reception Room
Two Bathrooms
Concierge, Porter
Communal Gardens
Period

# LOCATION



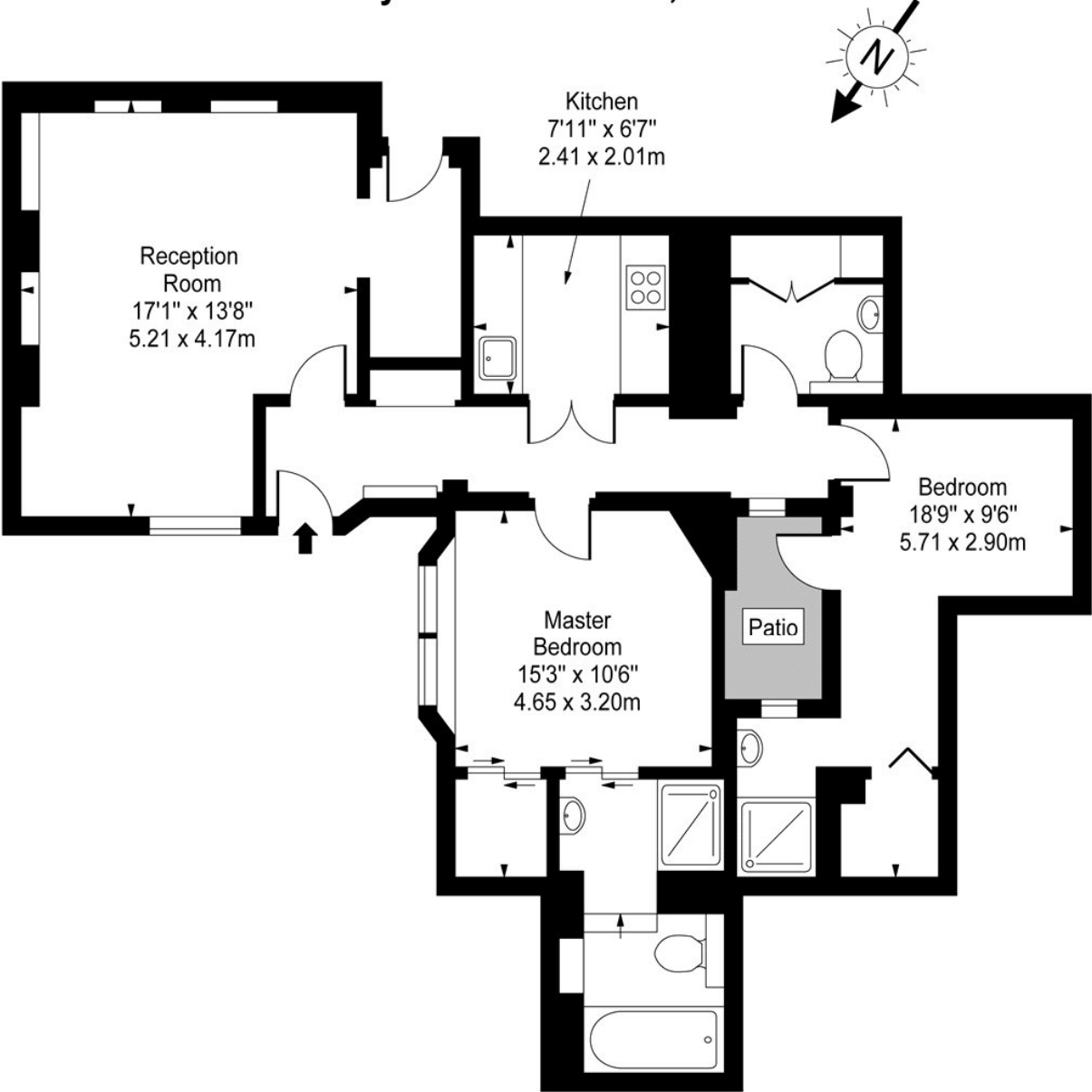
**HYDE PARK SALES**  
24-25 Albion Street, W2 2AX

020 7262 2030  
sales.hydepark@bhhs-london.com



# FLOORPLAN

## Hyde Park Gardens, W2



Lower Ground Floor

Approx Gross Internal Area     **915 Sq Ft - 85.00 Sq M**

For Illustration Purposes Only - Not To Scale  
[www.goldlens.co.uk](http://www.goldlens.co.uk)  
Ref. No. 001917