



# BASIL MANSIONS

KNIGHTSBRIDGE, SW3

# PROPERTY DETAILS

**Guide Price**  
£895,000

**Square Footage**  
703 Approx

**Ground Rent**  
N/A

**EPC Rating**  
D

**Council Tax Band**  
TBC

**Service Charge**  
£4,470 PA

**Tenure**  
Share of Leasehold

# DESCRIPTION

Located within this popular portered mansion building is this two bedroom apartment, benefitting from plenty of natural light and decent ceiling heights throughout. Basil Mansions is an attractive red brick building constructed in the 1890s, in the heart of Knightsbridge, moments from Harrods and the open spaces of Hyde Park.

The apartment, which extends to 703 Sq Ft internally, is presented in good condition throughout, would make a wonderful rental investment or pied à terre. and has a share of the freehold.

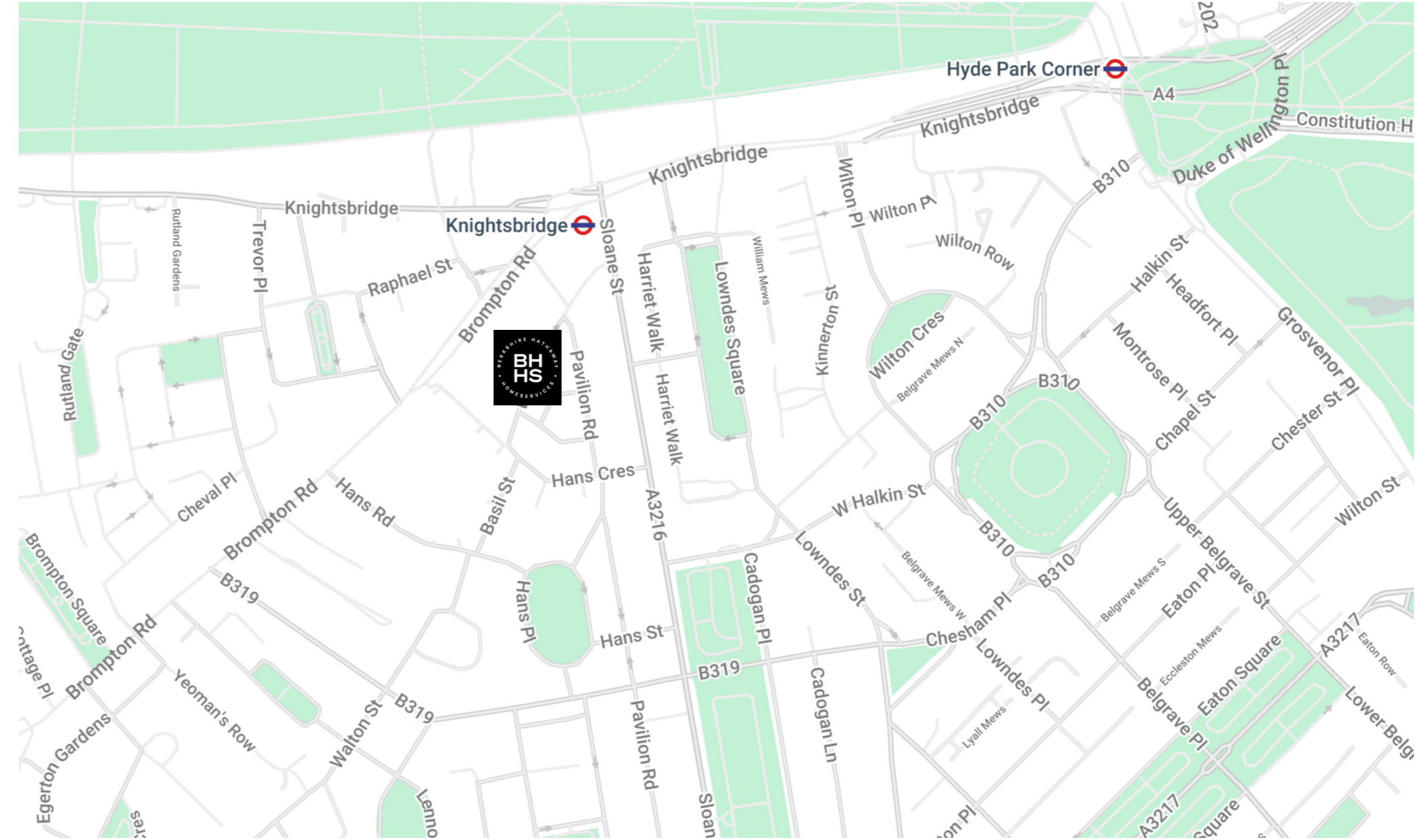
# FEATURES

Two Bedrooms

One Reception Room

One Bathroom

Concierge / Porter



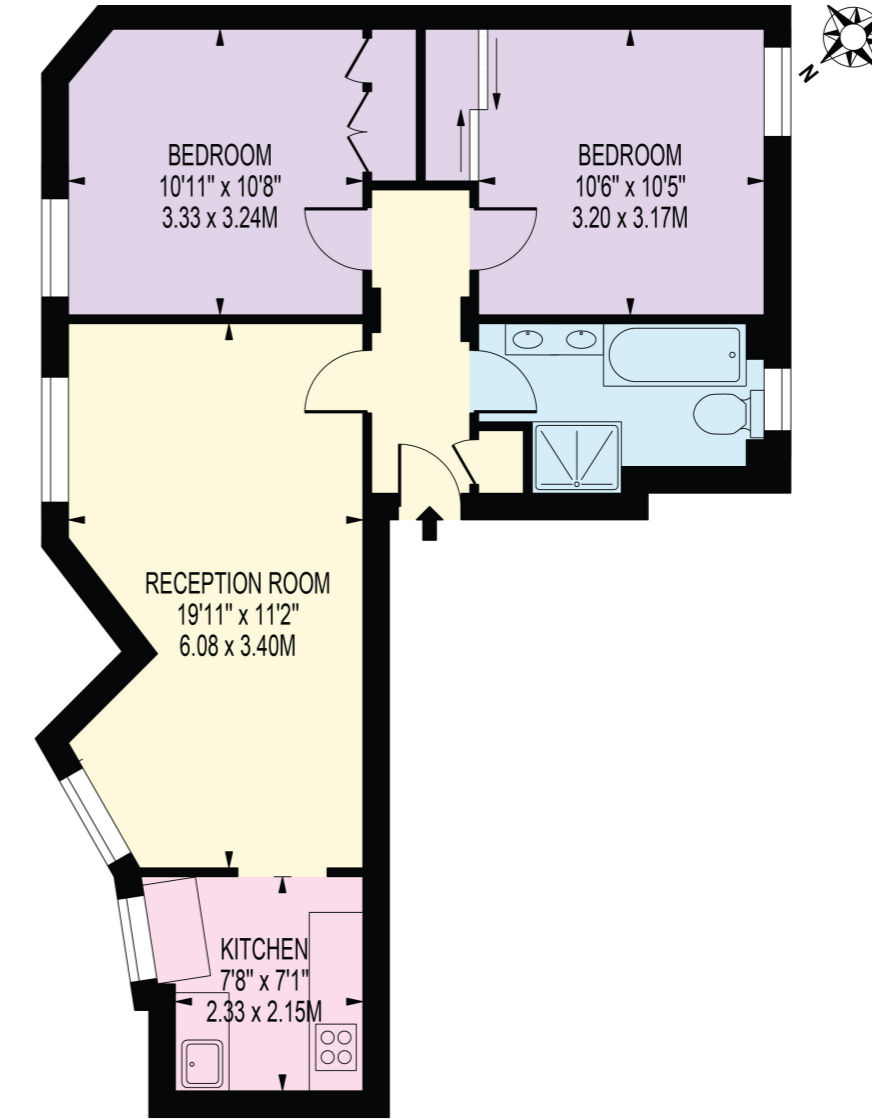






## FLOOR PLAN - BASIL MANSIONS

APPROXIMATE GROSS INTERNAL FLOOR AREA 65.3 SQ M / 703 SQ FT



LOWER GROUND FLOOR  
FOR ILLUSTRATION PURPOSES ONLY

**BERKSHIRE  
HATHAWAY**  
HOMESERVICES

LONDON

**KNIGHTSBRIDGE SALES**

55-57 SLOANE AVENUE, SW3 3DH

020 7235 9641

[sales.knightsbridge@bhhs-london.com](mailto:sales.knightsbridge@bhhs-london.com)



---

Consumer Protection from Unfair Trading Regulations 2008. These details are for guidance only and complete accuracy cannot be guaranteed. If there is any point, which is of particular importance, verification should be obtained. They do not constitute a contract or part of a contract. All measurements are approximate. No guarantee can be given with regard to planning permissions or fitness for purpose. No apparatus, equipment, fixture or fitting has been tested. Items shown in photographs are NOT necessarily included. Interested Parties are advised to check availability and make an appointment to view before travelling to see a property. A member of the franchise system of BHH Affiliates, LLC