



A Spacious and Modern Two Bedroom  
Apartment Close to Regents Park

# MUNSTER SQUARE

MARYLEBONE, NW1

£665 per week

**BERKSHIRE  
HATHAWAY**  
HOMESERVICES

LONDON

# PROPERTY DETAILS

<b>Guide Price</b> £665 per week	<b>Square Footage</b> 664
<b>Council Tax Band</b> C	<b>EPC Rating</b> C

A newly refurbished two double bedroom apartment ideal for sharers or a couple. The property comprises an open plan kitchen / reception room with integrated appliances which leads out onto a private balcony. There is an abundance of storage throughout and a family bathroom.

Situated moments from Regent's Park with Warren Street station only a 5-minute walk away. It is perfect for the London Business School, UCL, and SOAS and is within walking distance to the array of amenities on offer in Fitzrovia.

## FEATURES

Two Bedrooms
One Reception Room
One Bathroom
Balcony
Upper Floor
Lift
Furnished
Modern

## LOCATION

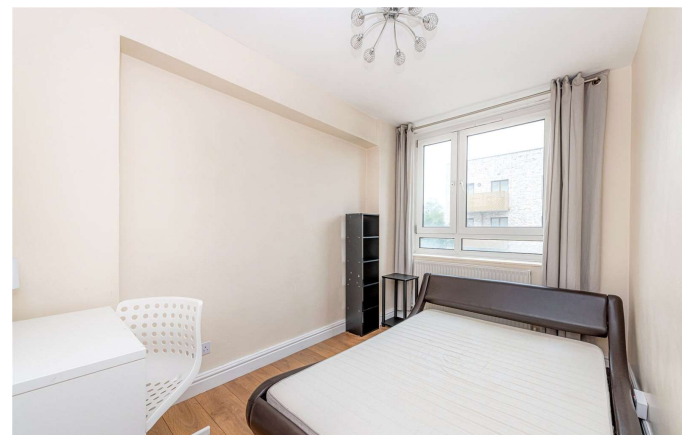
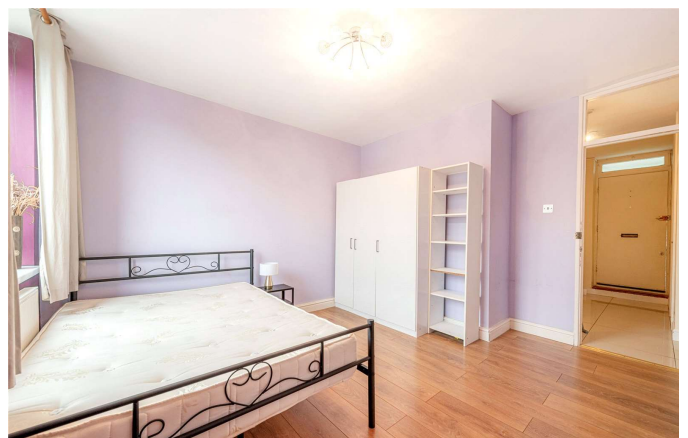


### MARYLEBONE LETTINGS

20A Paddington Street, W1U 5QP

020 7486 6338

lettings.marylebone@bhhs-london.com

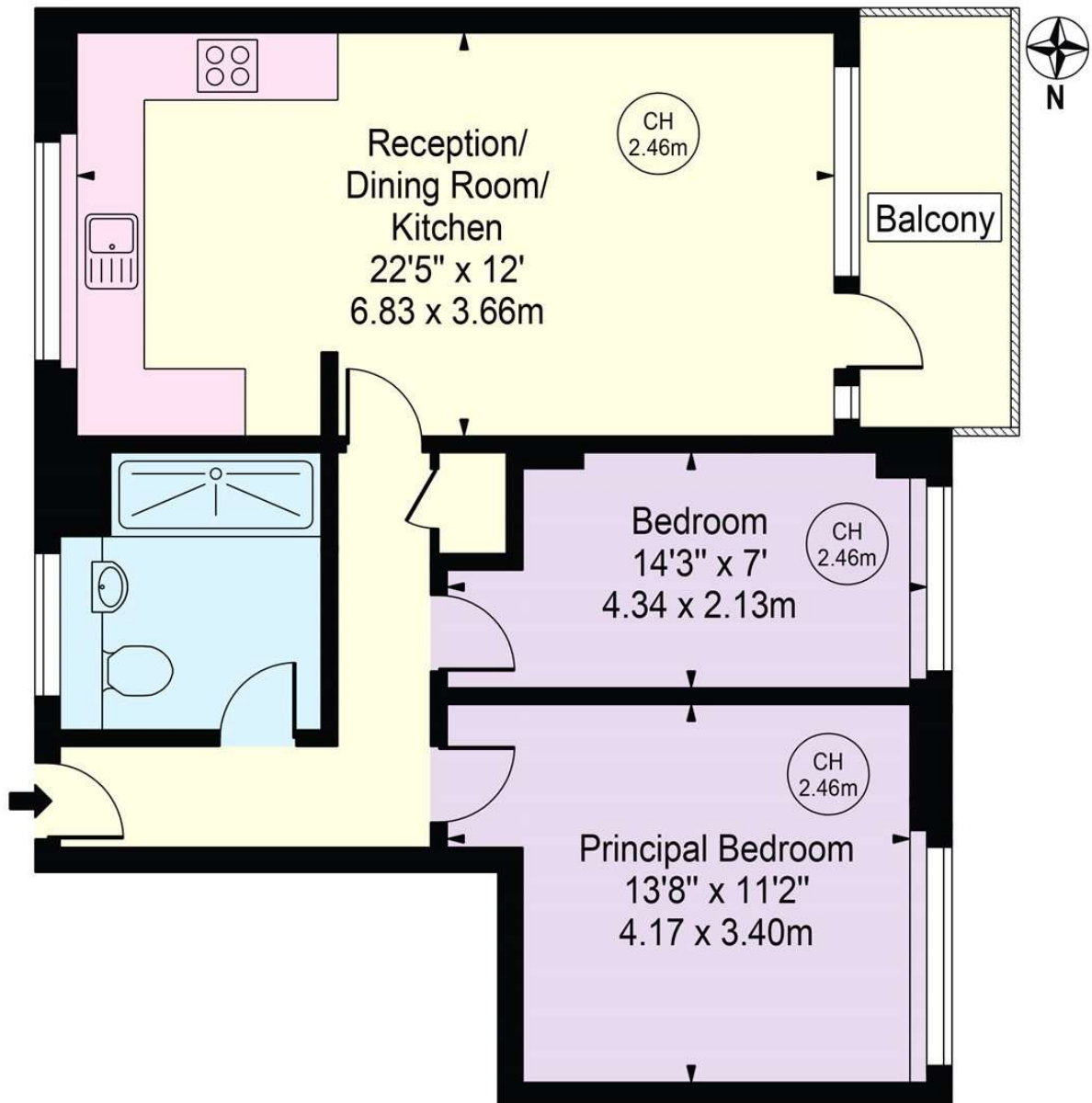




# FLOORPLAN

## Swallowfield

Approx. Gross Internal Area 664 Sq Ft - 61.69 Sq M  
Approx. External Area Of Balcony 55 Sq Ft - 5.11 Sq M



### Fifth Floor

For Illustration Purposes Only - Not To Scale

This floor plan should be used as a general outline for guidance only and does not constitute in whole or in part an offer or contract.  
Any intending purchaser or lessee should satisfy themselves by inspection, searches, enquiries and full survey as to the correctness of each statement.  
Any areas, measurements or distances quoted are approximate and should not be used to value a property or be the basis of any sale or let.  
Copyright Morriarti Photography & Design LTD