



A High Specification Apartment Near Hyde Park with  
High Ceilings and Private Parking

# CLEVELAND TERRACE

HYDE PARK, W2

£1,750 per week

**BERKSHIRE  
HATHAWAY**  
HOMESERVICES

LONDON

# PROPERTY DETAILS

<b>Guide Price</b> £1,750 per week	<b>Square Footage</b> 1,148
<b>Council Tax Band</b> G	<b>EPC Rating</b> E

Newly refurbished to an exceptional specification with 3.4M ceiling heights, this beautiful second floor apartment with lift access is located near Hyde Park and offers approx. 1,148 Sq Ft of lateral accommodation and a private parking space. The property is basked in natural light owing to its dual aspect and unique corner position within a beautifully maintained grade II listed white stucco building. The accommodation comprises an elegant open-plan reception measuring 27ft x 17ft which features a bespoke Italian kitchen with Bianco Eclipse quartzite counter tops and Miele appliances. The principal bedroom suite is accessed via an impressive illuminated hallway and features a beautiful en-suite bathroom with Villeroy and Boch sanitaryware, bespoke Italian joinery and a biometric security safe. The second bedroom suite also features bespoke joinery and a stunning en-suite with a large window, curved stone resin bathtub and a smart bathroom TV. A guest cloakroom and coat storage complete the well balanced accommodation.

## FEATURES

- Two Bedrooms
- One Reception Room
- Two Bathrooms
- Parking
- Upper Floor
- Lift

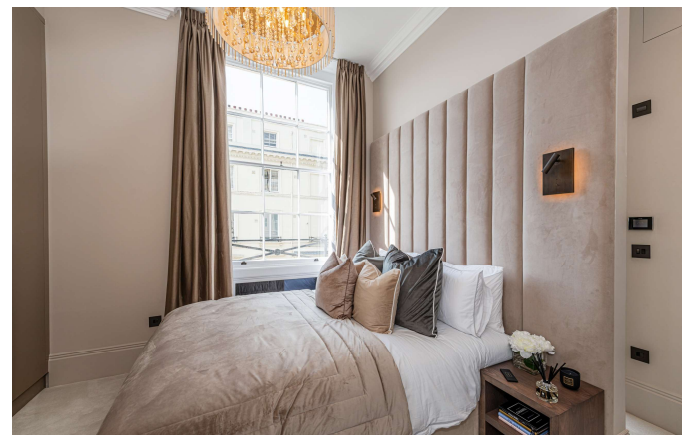
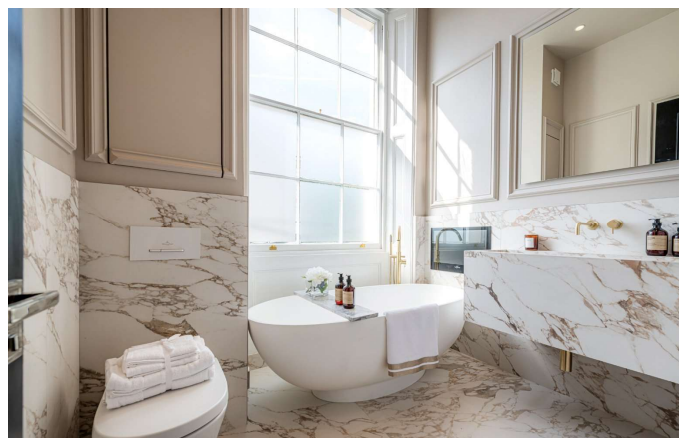
## LOCATION



**HYDE PARK LETTINGS**  
24-25 Albion Street, W2 2AX

020 7262 2030  
lettings.hydepark@bhhs-london.com

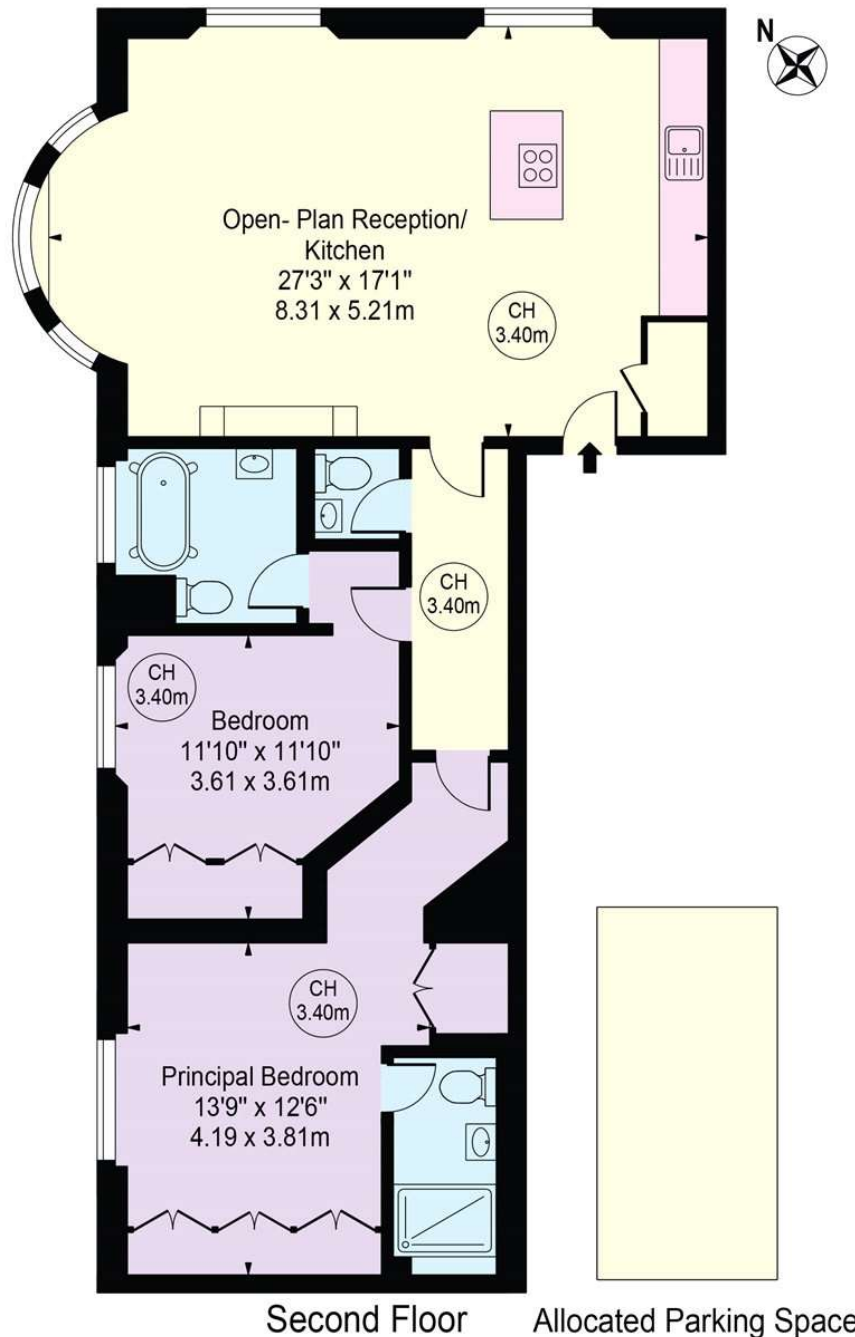




# FLOORPLAN

## Cleveland Terrace

Approx. Gross Internal Area 1148 Sq Ft - 106.65 Sq M  
(Excluding Parking Space)



For Illustration Purposes Only - Not To Scale

This floor plan should be used as a general outline for guidance only and does not constitute in whole or in part an offer or contract.  
Any intending purchaser or lessee should satisfy themselves by inspection, searches, enquiries and full survey as to the correctness of each statement.  
Any areas, measurements or distances quoted are approximate and should not be used to value a property or be the basis of any sale or let.  
Copyright Morriarti Photography & Design LTD