



Stunning Two Bedroom Apartment on the Upper
Floor of this Sought After Mansion Block in
Marylebone

LUXBOROUGH STREET

MARYLEBONE, W1U

Asking Price
£1,250,000

**BERKSHIRE
HATHAWAY**
HOMESERVICES

LONDON

PROPERTY DETAILS

Guide Price £1,250,000	Square Footage 900
Council Tax Band G	EPC C
Tenure To be advised	

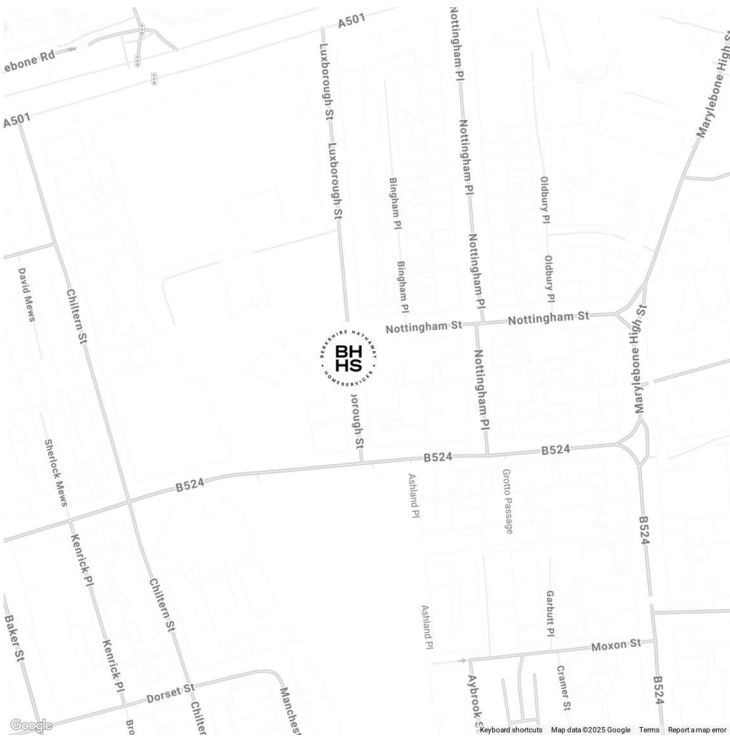
This bright and spacious two-bedroom apartment is located on the fourth floor of a well-regarded block, just moments from Marylebone High Street. Featuring wooden flooring, high ceilings, and air conditioning, the apartment is filled with natural light. The entrance opens directly into a generous reception room, offering impressive ceiling heights and a welcoming atmosphere. A modern kitchen, fully equipped with appliances, is accessed from the reception room. Off the hallway, you'll find two bedrooms, including one with an en-suite bathroom, as well as an additional bathroom and plenty of storage space.

Ideally situated between the amenities of both Baker Street and Marylebone High Street, this well-maintained mansion block offers lift access and secure entry.

FEATURES

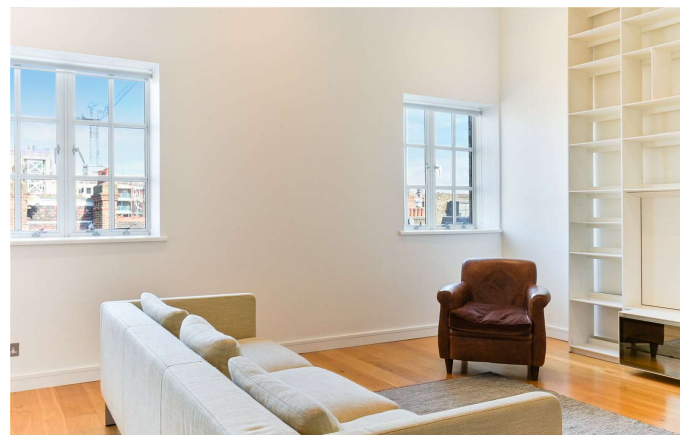
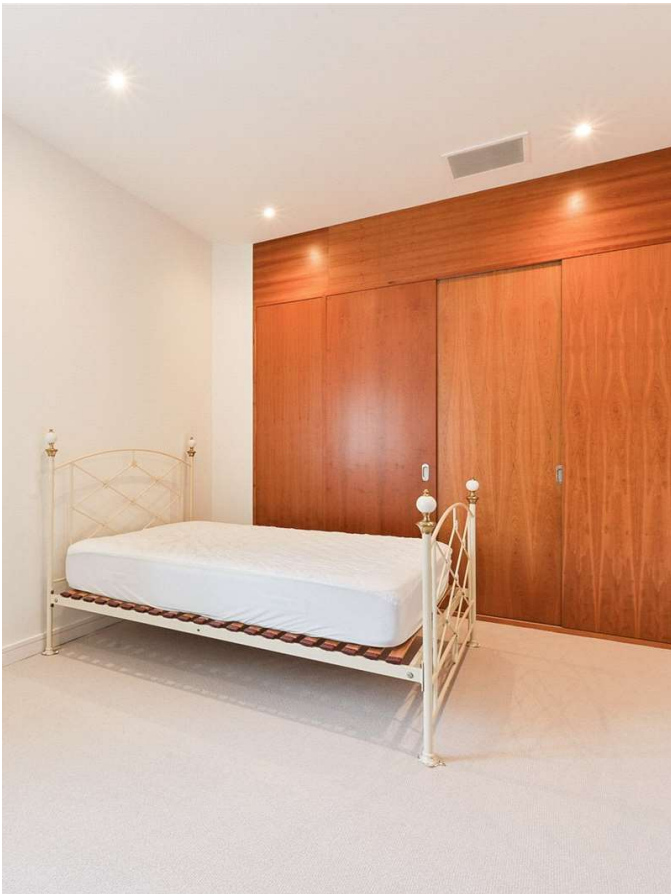
- Two Bedrooms
- One Reception Room
- Two Bathrooms
- Lift
- Modern

LOCATION

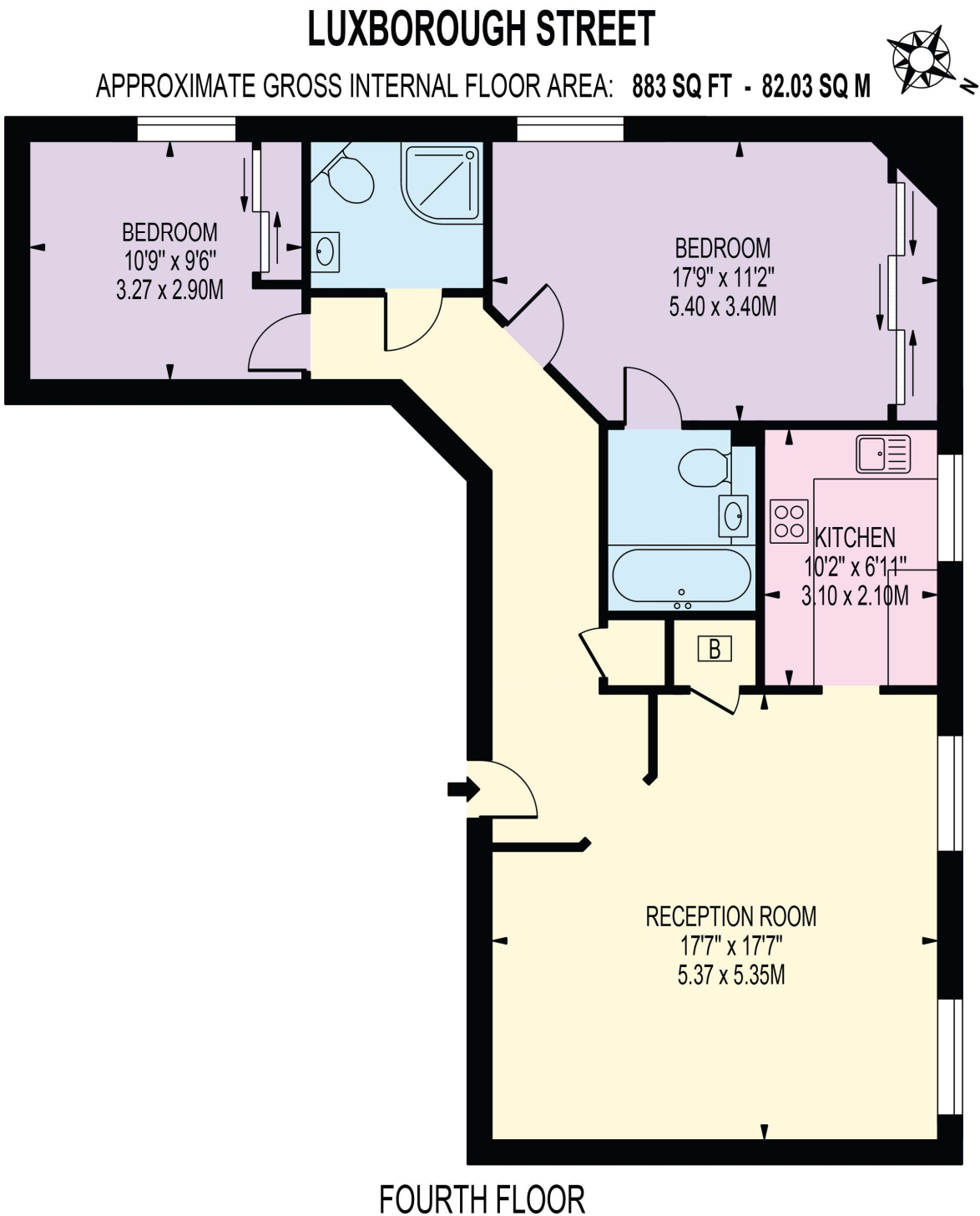


MARYLEBONE SALES
20A Paddington Street, W1U 5QP

020 7486 6338
sales.marylebone@bhhs-london.com



FLOORPLAN



FOR ILLUSTRATION PURPOSES ONLY

THIS FLOOR PLAN SHOULD BE USED AS A GENERAL OUTLINE FOR GUIDANCE ONLY AND DOES NOT CONSTITUTE IN WHOLE OR IN PART AN OFFER OR CONTRACT.
ANY INTENDING PURCHASER OR LESSEE SHOULD SATISFY THEMSELVES BY INSPECTION, SEARCHES, ENQUIRIES AND FULL SURVEY AS TO THE CORRECTNESS OF EACH STATEMENT.
ANY AREAS, MEASUREMENTS OR DISTANCES QUOTED ARE APPROXIMATE AND SHOULD NOT BE USED TO VALUE A PROPERTY OR BE THE BASIS OF ANY SALE OR LET.