



An Immaculately Presented Three Bedroom
Apartment

WHITEHALL PLACE

WHITEHALL, SW1A

£7,400 per week

**BERKSHIRE
HATHAWAY**
HOMESERVICES

LONDON

PROPERTY DETAILS

Guide Price £7,400 per week	Square Footage 2971
Council Tax Band H	EPC Rating D

We are delighted to present this stunning two-bedroom apartment forming part of exclusive Corinthia Residence, this private residence located moments from the River Thames and also have access to the adjoining Corinthia Hotel.

A beautifully interior designed lateral apartment of 2,917 square foot situated within the Corinthia Residences, offering unique access to the hotel and all its services.

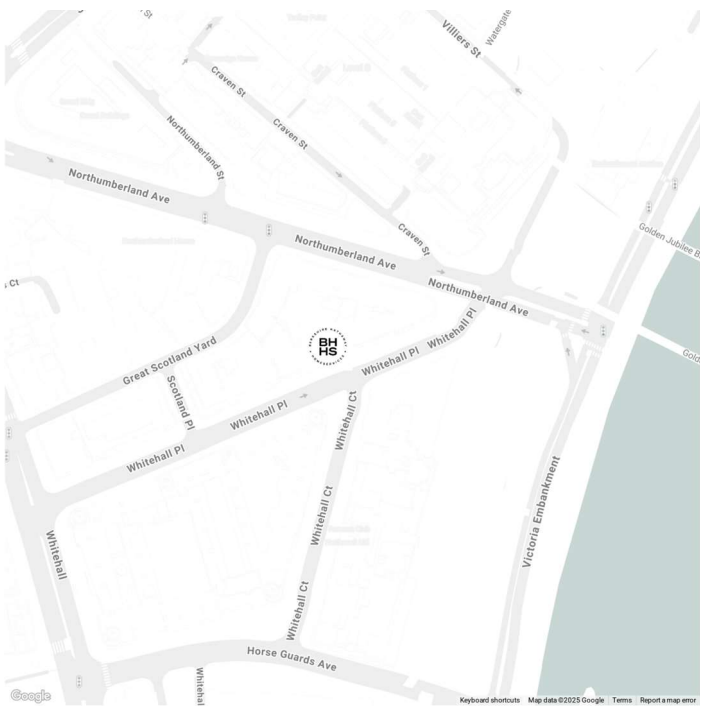
10 Whitehall Place promises a lifestyle of comfortable privilege. Along with a prestigious address, voluminous space and uncompromising quality, the palatial apartments provide access to the services of the adjoining Corinthia Hotel. The Corinthia is now the prestigious setting for a unique collection of apartments. Situated near the River Thames, Ministries of State and the official home of the British Prime Minister.

Residents enjoy free access to the gym and business centre, as well as a reduction on paid services throughout the hotel, including the restaurant, bar, and spa. A private entrance exclusively for residents provides discreet, direct access to the hotel.

FEATURES

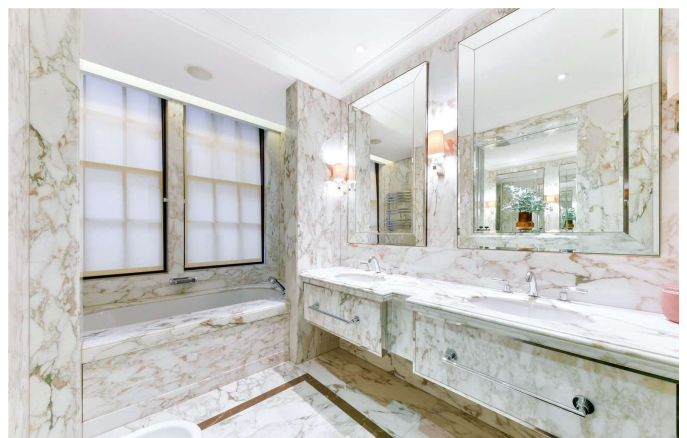
- Three Bedrooms
- Two Reception Rooms
- Four Bathrooms
- Concierge / Porter
- 24 Hour Security
- Lift

LOCATION



MARYLEBONE LETTINGS
20A Paddington Street, W1U 5QP

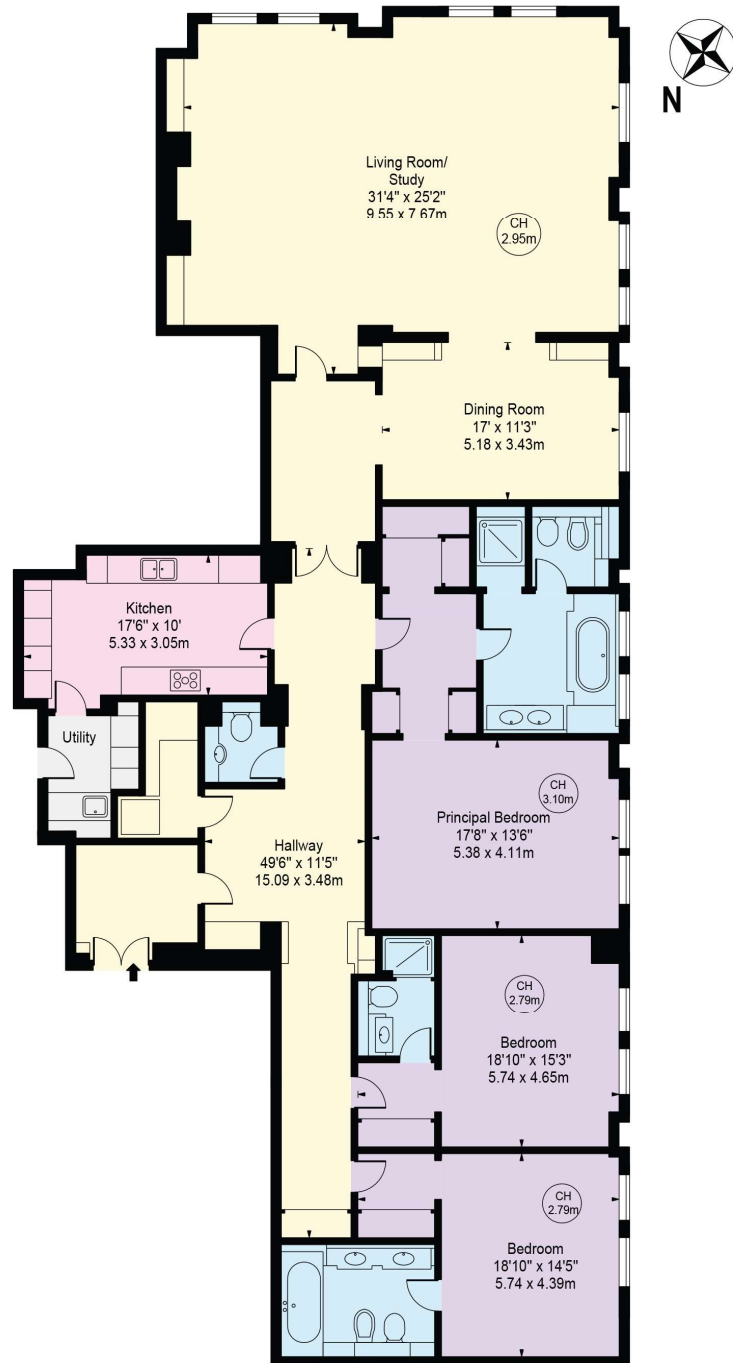
020 7486 6338
lettings.marylebone@bhhs-london.com



FLOORPLAN

Corinthia Residences

Approx. Gross Internal Area 2971 Sq Ft - 276.01 Sq M



Fourth Floor

For Illustration Purposes Only - Not To Scale

This floor plan should be used as a general outline for guidance only and does not constitute in whole or in part an offer or contract.
Any intending purchaser or lessee should satisfy themselves by inspection, searches, enquiries and full survey as to the correctness of each statement.
Any areas, measurements or distances quoted are approximate and should not be used to value a property or be the basis of any sale or let.

Copyright Morriarti Photography & Design LTD