



Two Bedroom with Balcony in Iconic Gasholders

GASHOLDERS

KING'S CROSS, N1C

Asking Price
£2,000,000

**BERKSHIRE
HATHAWAY**
HOMESERVICES

LONDON

PROPERTY DETAILS

Guide Price £2,000,000	Square Footage 1,017
Council Tax Band G	EPC B
Ground Rent £800 pa	Service Charge £21,000 pa
Tenure Leasehold	

A beautifully presented two bedroom duplex apartment with balcony and views of the Regent's Canal in the iconic Grade II listed Gasholders in King's Cross.

Residents of Gasholders enjoy access to exceptional facilities including a 24-hour concierge, gym, spa with pool, cinema, games room, lounge and conference room.

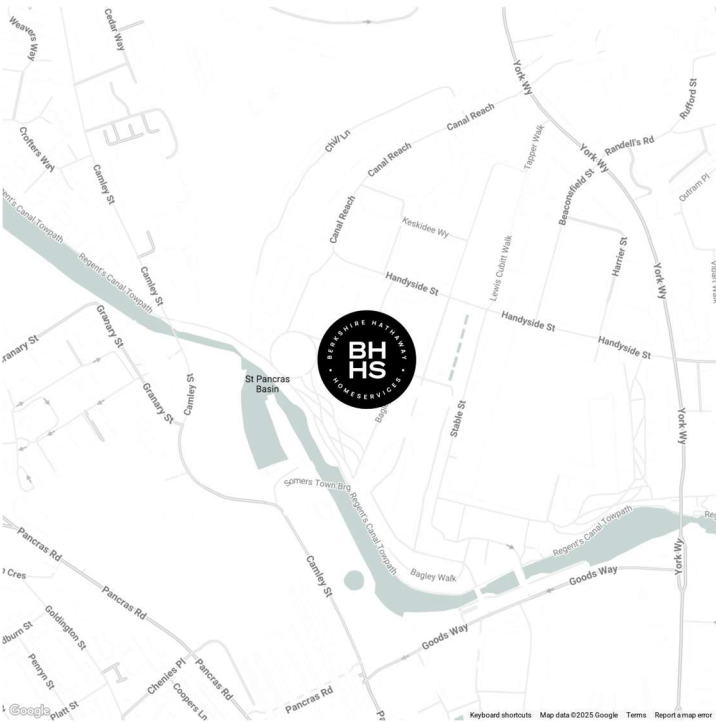
Gasholders is perfectly located with easy access to Coal Drops Yard and Granary Square with their array of boutiques, bars, and restaurants.

Nearby transport links include St. Pancras International and King's Cross Station (Northern, Victoria, Hammersmith & City, Metropolitan, Circle and Piccadilly lines, National Rail) providing frequent services into the City and the West End.

FEATURES

- Two Bedrooms
- One Reception Room
- Two Bathrooms
- 24 Hour Security
- First Floor
- Roof Terrace/Balcony
- Full Amenities Including Spa and Gym

LOCATION

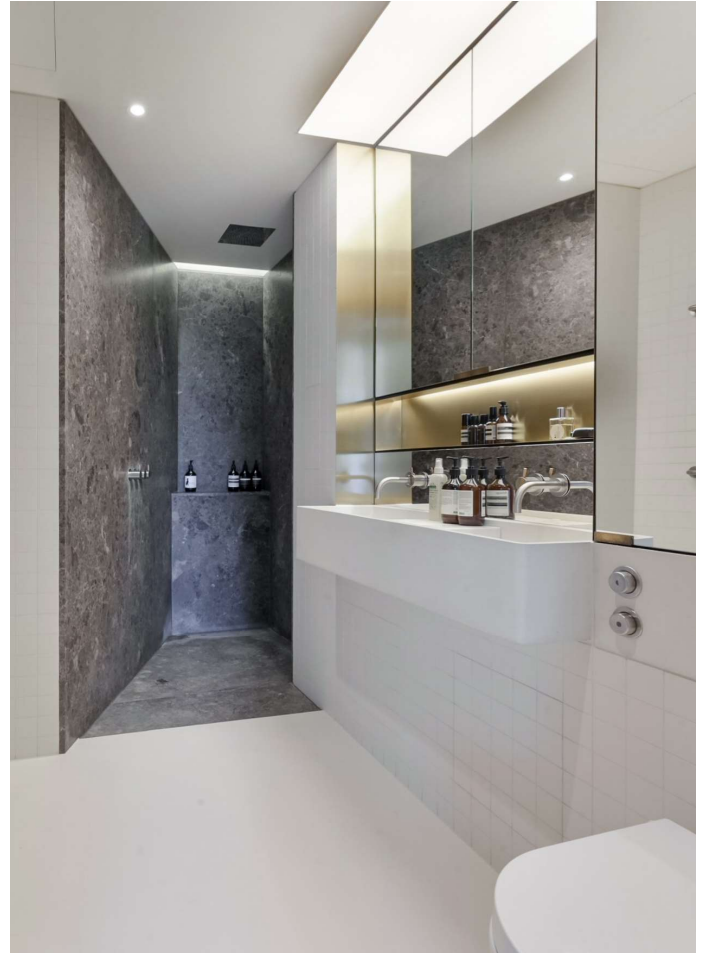


KINGS CROSS SALES

Unit 4,6 Pancras Square, N1C 4AG

020 7467 2020

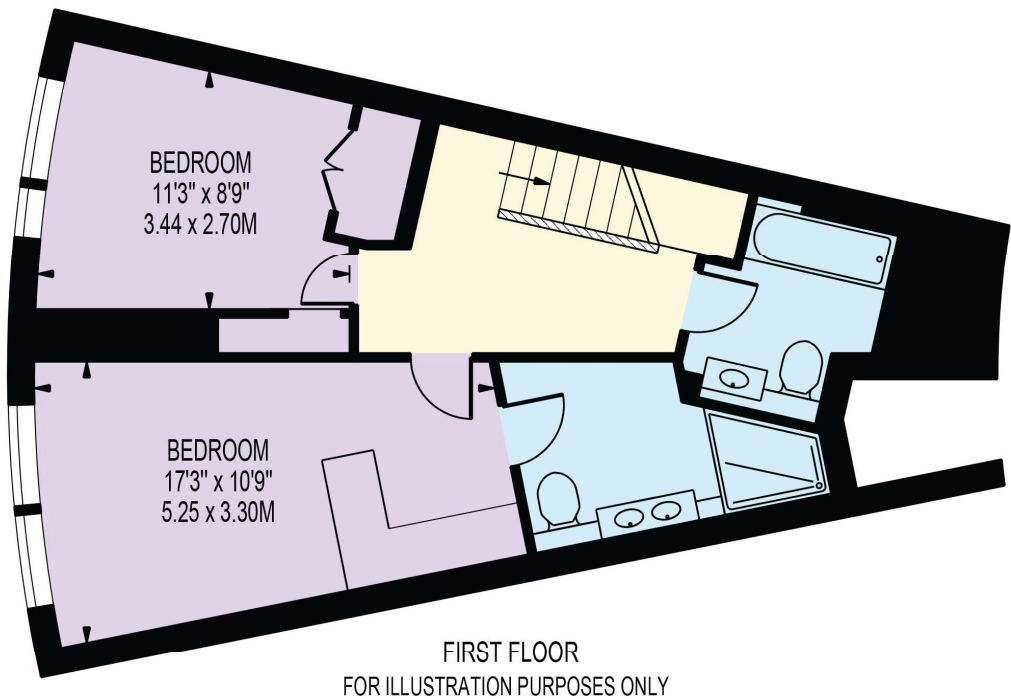
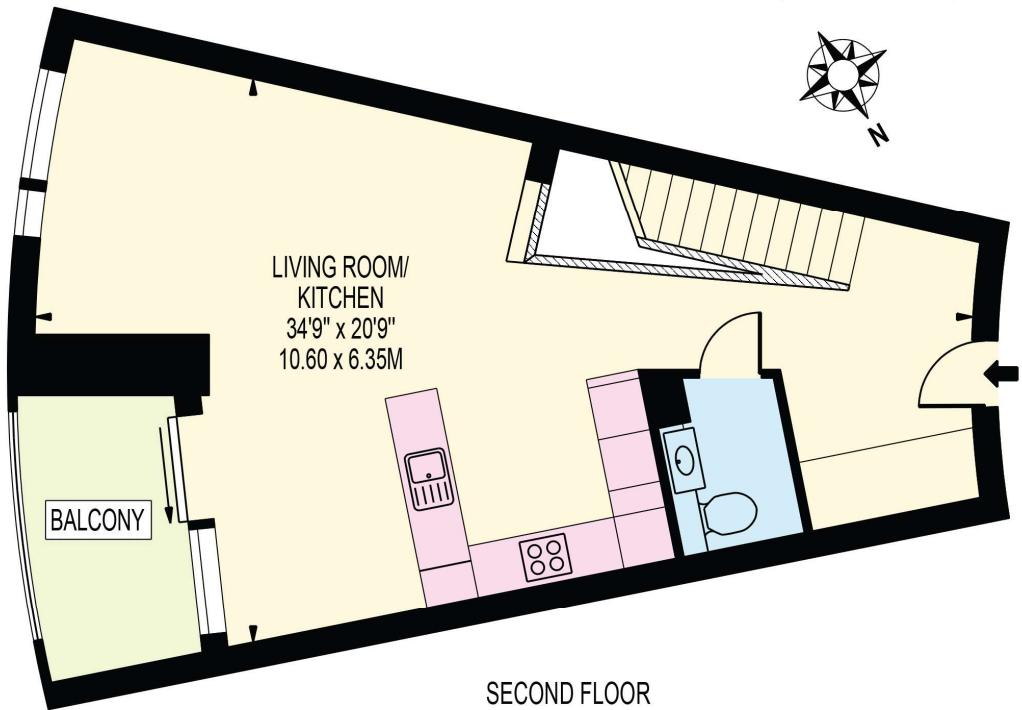
sales.kingscross@bhhs-london.com



FLOORPLAN

GASHOLDERS

APPROXIMATE GROSS INTERNAL FLOOR AREA: 1017 SQ FT - 94.46 SQ M



THIS FLOOR PLAN SHOULD BE USED AS A GENERAL OUTLINE FOR GUIDANCE ONLY AND DOES NOT CONSTITUTE IN WHOLE OR IN PART AN OFFER OR CONTRACT. ANY INTENDING PURCHASER OR LESSEE SHOULD SATISFY THEMSELVES BY INSPECTION, SEARCHES, ENQUIRIES AND FULL SURVEY AS TO THE CORRECTNESS OF EACH STATEMENT. ANY AREAS, MEASUREMENTS OR DISTANCES QUOTED ARE APPROXIMATE AND SHOULD NOT BE USED TO VALUE A PROPERTY OR BE THE BASIS OF ANY SALE OR LET.