



A Modern And Spacious Two-Bedroom
Apartment in The Heart Of Euston

CHURCHWAY

EUSTON, NW1

£650 per week

**BERKSHIRE
HATHAWAY**
HOMESERVICES

LONDON

PROPERTY DETAILS

Guide Price	Square Footage
£650 per week	758

Council Tax Band	EPC Rating
D	D

A modern and spacious two-bedroom apartment in the heart of Euston. Located on a quiet road tucked around the side of Euston Station, this purpose-built apartment boasts two large double bedrooms with ample storage, a spacious separate living room, and a further separate eat-in kitchen and modern bathroom . The modern home benefits from recent renovations.

Situated on Churchway, you benefit from the hustle and bustle of Euston, with an array of bars, coffee houses, restaurants, and shops. Kings Cross, Marylebone, and Tottenham Court Road are all within walking distance, while you enjoy the tranquillity of a quieter side street. It's central location also makes it convenient for students of UCL & Central Saint Martins

Transport links are conveniently located at Euston Station, just moments away, including the Victoria Line, Northern Line, and National Rail.

FEATURES

Two Bedrooms

One Reception Room

One Bathroom

Period

Ground Floor

Modern

Ample Storage

Recently Renovated

LOCATION

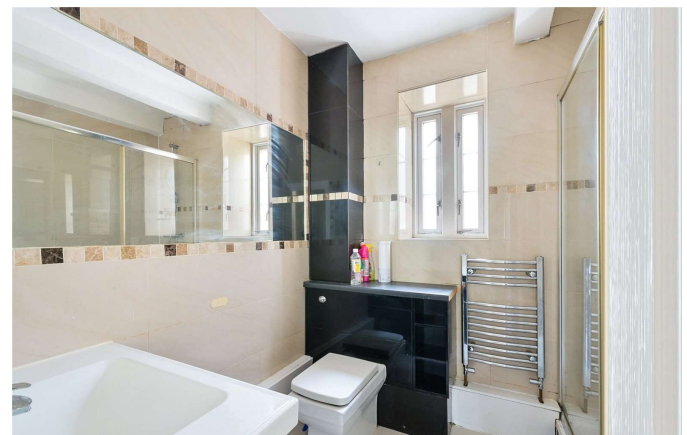
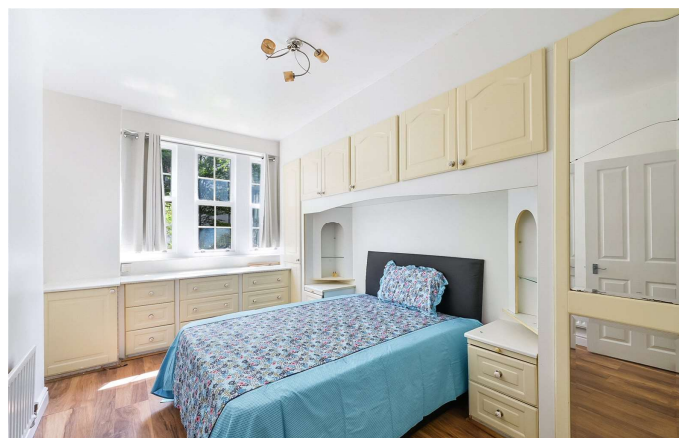


KINGS CROSS LETTINGS

Unit 4,6 Pancras Square, N1C 4AG

020 7467 2020

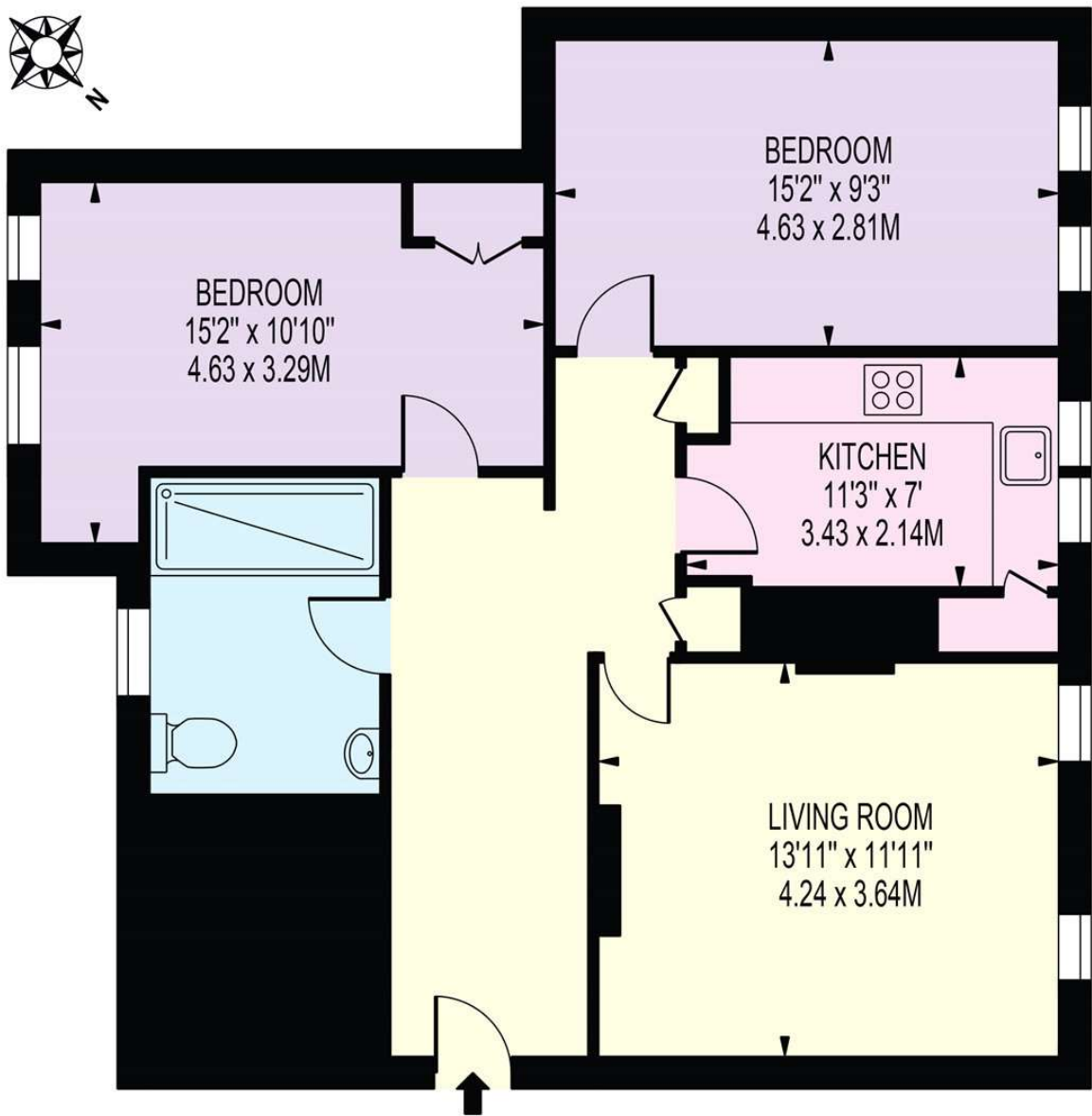
lettings.kingscross@bhhs-london.com



FLOORPLAN

WELLESLEY HOUSE, CHURCHWAY

APPROXIMATE GROSS INTERNAL FLOOR AREA: 758 SQ FT - 70.40 SQ M



FOR ILLUSTRATION PURPOSES ONLY

THIS FLOOR PLAN SHOULD BE USED AS A GENERAL OUTLINE FOR GUIDANCE ONLY AND DOES NOT CONSTITUTE IN WHOLE OR IN PART AN OFFER OR CONTRACT.
ANY INTENDING PURCHASER OR LESSEE SHOULD SATISFY THEMSELVES BY INSPECTION, SEARCHES, ENQUIRIES AND FULL SURVEY AS TO THE CORRECTNESS OF EACH STATEMENT.
ANY AREAS, MEASUREMENTS OR DISTANCES QUOTED ARE APPROXIMATE AND SHOULD NOT BE USED TO VALUE A PROPERTY OR BE THE BASIS OF ANY SALE OR LET.