



Spacious Three Bedroom Apartment in a Sought
After Portered Block

CHILTERN STREET

MARYLEBONE, W1U

£1,615.38 per week

**BERKSHIRE
HATHAWAY**
HOMESERVICES

LONDON

PROPERTY DETAILS

Guide Price £1,615.38 per week	Square Footage 1829
Council Tax Band G	EPC Rating D

This expansive three-bedroom apartment in Portman Mansions offers over 1,800 sq ft of well-appointed living space. The property features a generous double reception room, three excellent double bedrooms, and a separate, fully fitted kitchen that has been recently refurbished. There are two bathrooms, including a master en suite with a walk-in wardrobe and an additional study.

Further benefits include access to beautifully maintained communal gardens, directly accessible from the apartment.

Newly refurbished throughout, the apartment boasts high ceilings and elegant wooden flooring.

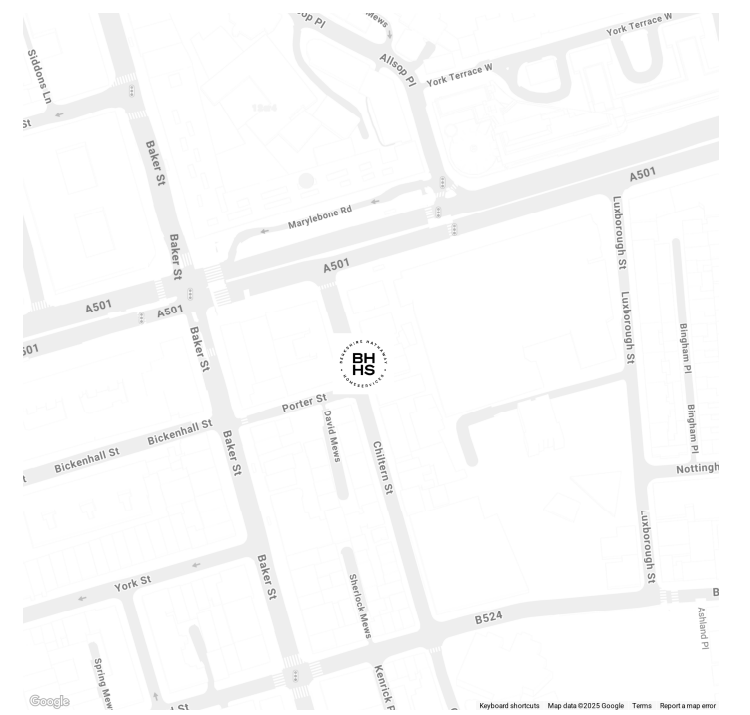
Ideally located on the ever-popular Chiltern Street, with easy access to Baker Street Underground Station and the wide array of shops, cafés, and restaurants on both Baker Street and Marylebone High Street.

VIRTUALLY STAGED

FEATURES

Three Bedrooms
Two Reception Rooms
Two Bathrooms
Concierge/ Porter
Communal Gardens
Period

LOCATION

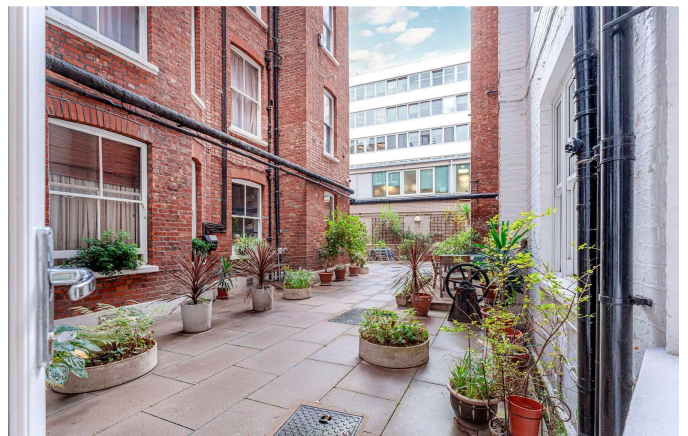


MARYLEBONE LETTINGS

20A Paddington Street, W1U 5QP

020 7486 6338

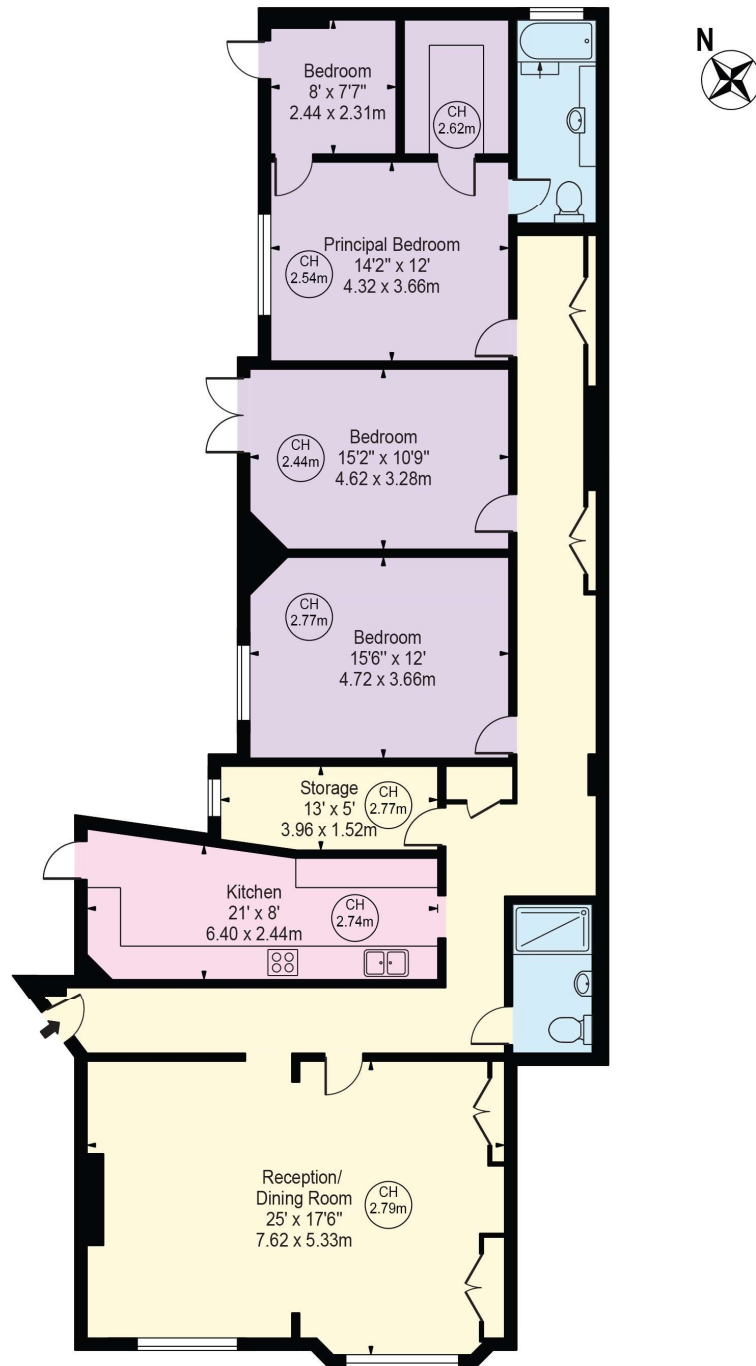
lettings.marylebone@bhhs-london.com



FLOORPLAN

Portman Mansions

Approx. Gross Internal Area 1829 Sq Ft - 169.92 Sq M



Lower Ground Floor

For Illustration Purposes Only - Not To Scale

This floor plan should be used as a general outline for guidance only and does not constitute in whole or in part an offer or contract. Any intending purchaser or lessee should satisfy themselves by inspection, searches, enquiries and full survey as to the correctness of each statement. Any areas, measurements or distances quoted are approximate and should not be used to value a property or be the basis of any sale or let.

Copyright Morriarti Photography & Design LTD