



# MOUNT STREET

MAYFAIR, W1K





## EXQUISITE UPPER FLOOR APARTMENT

A beautifully presented two-bedroom apartment in excellent condition throughout, set within a handsome period building and served by passenger lift.

Situated in a striking period building on Mount Street, this superb two-bedroom apartment extends to just under 1,400 square feet and has been meticulously maintained throughout. Accessed via a passenger lift, the apartment features high ceilings, original ornate cornicing and deep-reveal sash windows which flood the rooms with light.

The generous reception room provides ample space for both entertaining and relaxed living, seamlessly leading through to a bespoke kitchen/dining area fitted with integrated appliances and stone surfaces. Two well-proportioned double bedrooms both benefit from built-in storage and hardwood floors and high quality fixtures and fittings add to the apartment's sense of quality and cohesion.

This attractive red-brick block exemplifies Mayfair's classical architecture and is situated one of Mayfair's most sought after roads. Mount Street's luxury boutiques, renowned restaurants and private garden squares lie on your doorstep, while both Bond Street and Green Park stations are within easy walking distance, providing swift connections across the capital.

## FEATURES

Two Bedrooms

Reception Room with separate Dining Room

Two Bathrooms

Residents' Parking

Period Features

Very Good Decoration

Upper Floor

Lift

High Ceilings

High Quality Fixtures

Hardwood Floors

## PROPERTY DETAILS

Guide Price

£5,750,000

Square Footage

1,374 Sq Ft.

EPC Rating

G

Council Tax Band

G

Service Charge

£6,228 PA

Tenure

Leasehold - 101 years



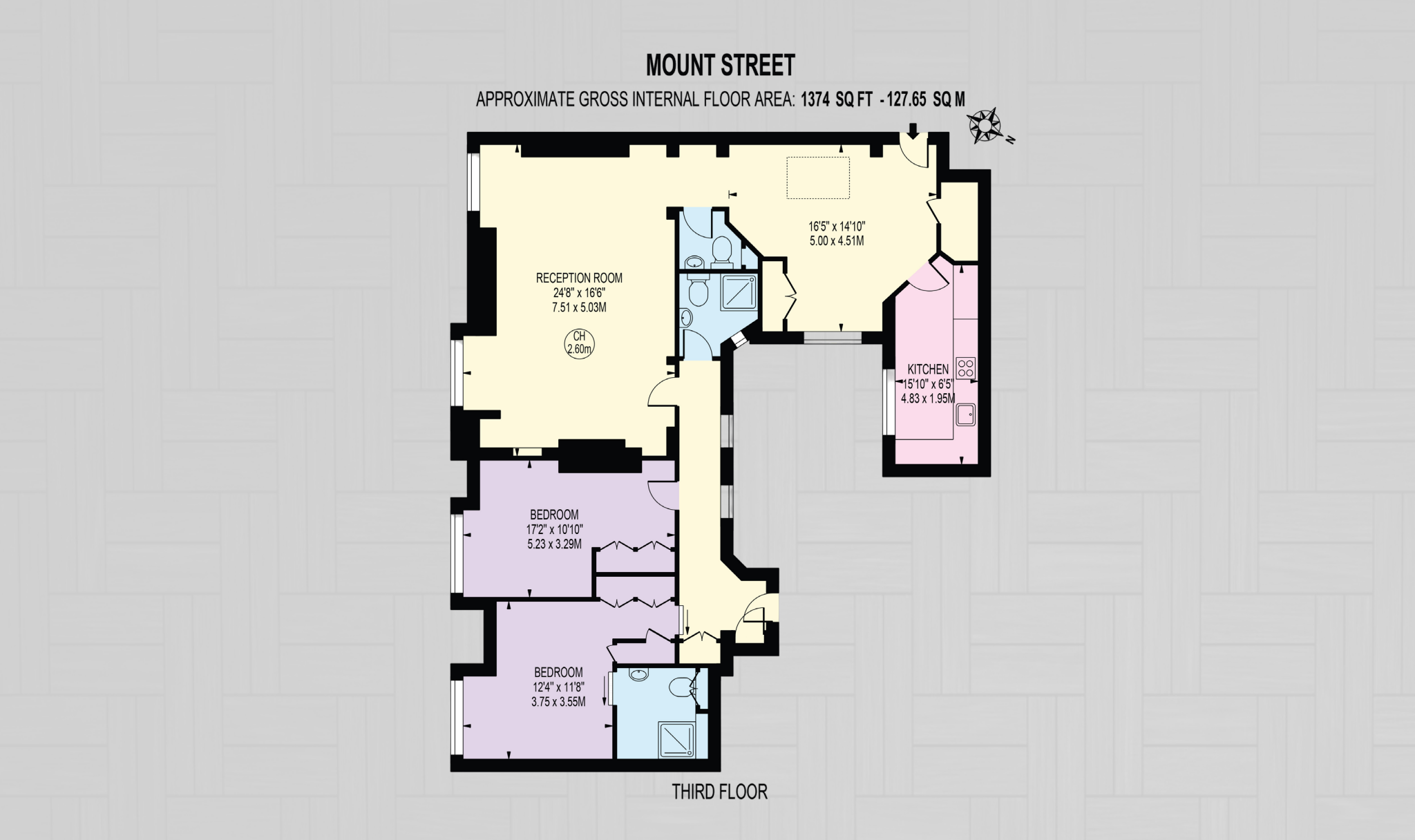








FLOOR PLAN





**BERKSHIRE  
HATHAWAY**  
HOMESERVICES

LONDON

**MARYLEBONE SALES**

20a Paddington Street, W1U 5QP

020 7486 6338

[sales.marylebone@bhhs-london.com](mailto:sales.marylebone@bhhs-london.com)

**HYDE PARK SALES**

24-25 Albion Street, W2 2AX

020 7262 2030

[sales.hydepark@bhhs-london.com](mailto:sales.hydepark@bhhs-london.com)

