



# MOUNT STREET

MAYFAIR, W1K





## MODERN LIVING AND PERIOD FEATURES

A recently renovated two-bedroom apartment in excellent condition throughout, set within a striking period building.

This superb two-bedroom apartment extends to just under 920 sq ft and has been meticulously refurbished throughout.

The generous reception room with open plan kitchen, provides ample space for both entertaining and relaxed living, Two well-proportioned double bedrooms both benefit from built-in storage and use of a contemporary family bathroom.

This attractive red-brick block exemplifies Mayfair's classical architecture. Mount Street's luxury boutiques, renowned restaurants and private garden squares lie on your doorstep, while both Bond Street and Green Park stations are within easy walking distance, providing swift connections across the capital.

## FEATURES

Two Bedrooms

One Reception Room

One Bathroom

Residents' Parking

Period Features

Very Good Decoration

Upper Floor

Fully Equipped Kitchen

Integrated Appliances

Hardwood Floors

## PROPERTY DETAILS

**Guide Price**  
£3,500,000

**Square Footage**  
917 Sq Ft.

**EPC Rating**  
D

**Council Tax Band**  
F

**Service Charge**  
£6,228 PA

**Tenure**  
Leasehold - 105 years



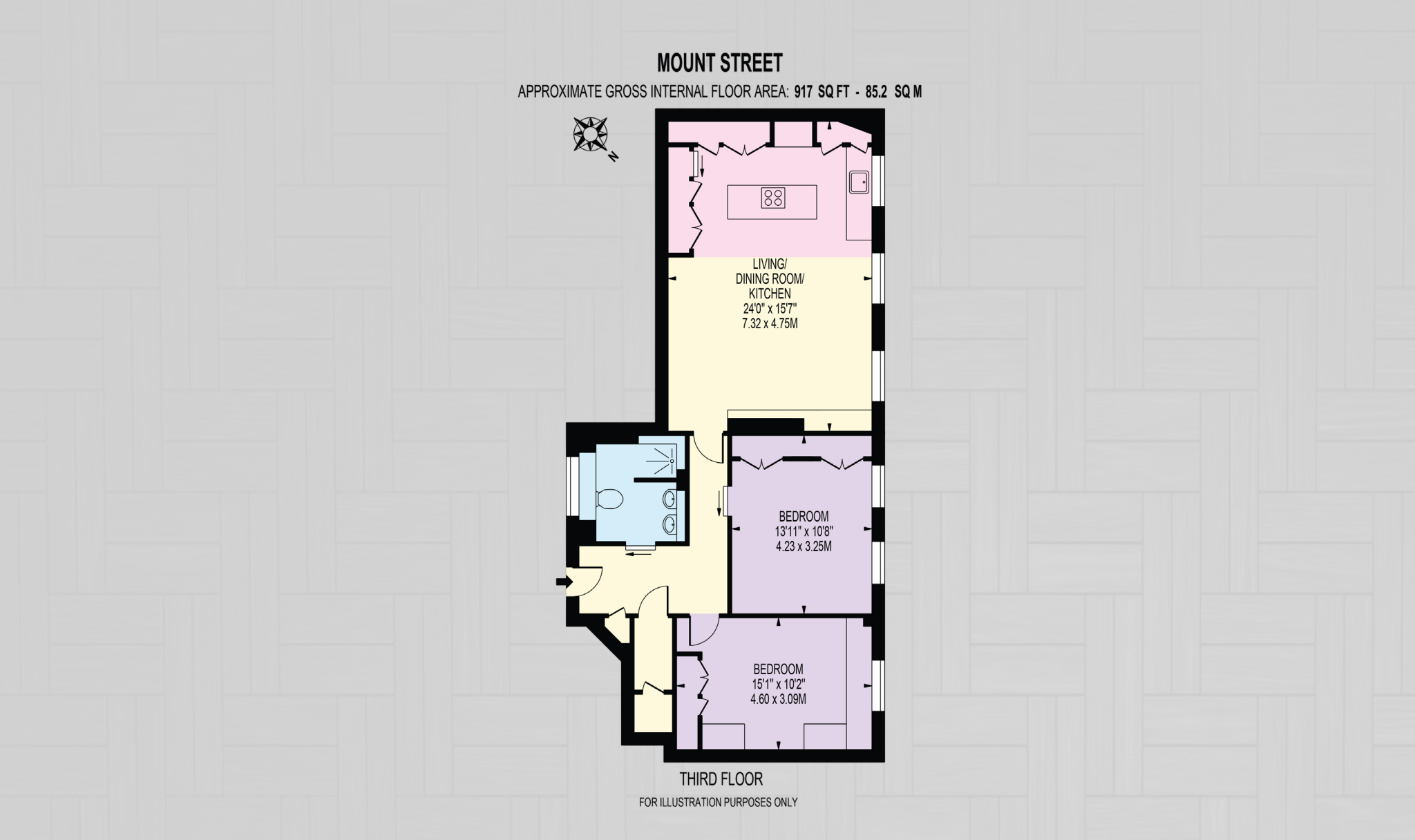








# FLOOR PLAN





**MARYLEBONE SALES**

20a Paddington Street, W1U 5QP

020 7486 6338

[sales.marylebone@bhhs-london.com](mailto:sales.marylebone@bhhs-london.com)

**HYDE PARK SALES**

24-25 Albion Street, W2 2AX

020 7262 2030

[sales.hydepark@bhhs-london.com](mailto:sales.hydepark@bhhs-london.com)

