



HYDE PARK PLACE

HYDE PARK ESTATE, W2

A Stylishly Presented and Recently Refurbished Three Bedroom
Split Level Apartment
£2,500,000

HYDE PARK PLACE

HYDE PARK ESTATE, W2

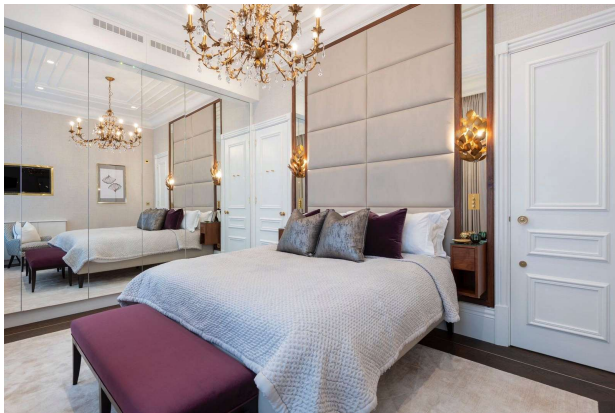
Offering wonderfully specious accommodation, this 3 double bedroom ground and lower ground floor apartment offers substantial room proportions, high ceilings and Hyde Park views. With three bathrooms and a well equipped kitchen, this property is ready to move into.

Hyde Park Place on the Bayswater Road near Marble Arch is well placed for access to the excellent shopping and restaurants of Oxford Street and Mayfair and only a short walk to a Central Line underground station. The Elizabeth Line, Heathrow Express and Paddington Station are within walking distance.

- Leasehold 166 years 11 months
- Three Bedrooms
- One Reception Room
- Three Bathrooms
- Apartment
- Basement
- Ground Floor
- 1464 Sq Ft Approximately

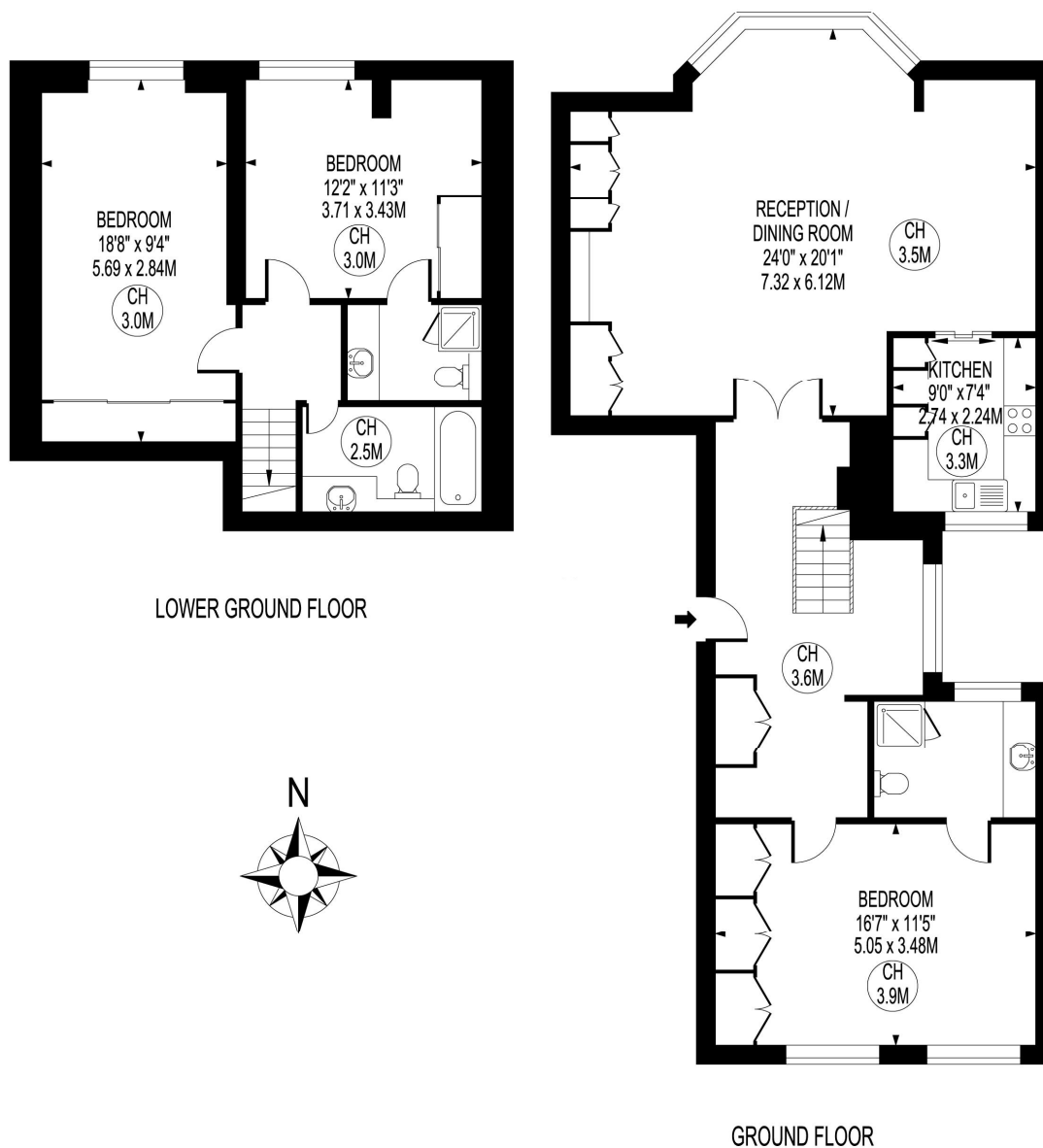
TENURE:	Leasehold	EPC RATING:	D
SERVICE CHARGE:	£3212 per annum (approximately)	COUNCIL TAX BAND:	G
GROUND RENT:	£500 per annum (approximately)		





HYDE PARK PLACE

APPROXIMATE GROSS INTERNAL FLOOR AREA : 1380 SQ FT- 128.20 SQ M



FOR ILLUSTRATION PURPOSES ONLY

THIS FLOOR PLAN SHOULD BE USED AS A GENERAL OUTLINE FOR GUIDANCE ONLY AND DOES NOT CONSTITUTE IN WHOLE OR IN PART AN OFFER OR CONTRACT. ANY INTENDING PURCHASER OR LESSEE SHOULD SATISFY THEMSELVES BY INSPECTION, SEARCHES, ENQUIRIES AND FULL SURVEY AS TO THE CORRECTNESS OF EACH STATEMENT. ANY AREAS, MEASUREMENTS OR DISTANCES QUOTED ARE APPROXIMATE AND SHOULD NOT BE USED TO VALUE A PROPERTY OR BE THE BASIS OF ANY SALE OR LET.

Hyde Park & Bayswater Sales
24-25 Albion Street
London
W2 2AX

020 7262 2030
sales.hydepark@bhhs-london.com
bhhs-london.com

**BERKSHIRE
HATHAWAY**
HOMESERVICES
LONDON

Consumer Protection from Unfair Trading Regulations 2008. These details are for guidance only and complete accuracy cannot be guaranteed. If there is any point, which is of particular importance, verification should be obtained. They do not constitute a contract or part of a contract. All measurements are approximate. No guarantee can be given with regard to planning permissions or fitness for purpose. No apparatus, equipment, fixture or fitting has been tested. Items shown in photographs are NOT necessarily included. Interested Parties are advised to check availability and make an appointment to view before travelling to see a property. A member of the franchise system of BHH Affiliates, LLC