



A Period Two Bedroom Property in the Heart of
Marylebone

LUXBOROUGH STREET

MARYLEBONE, W1U

£650 per week

**BERKSHIRE
HATHAWAY**
HOMESERVICES

LONDON

PROPERTY DETAILS

Guide Price £650 per week	Square Footage 519	Located on the first floor of a popular mansion block, this bright period property benefits from practical and modern living space throughout. This enviably located property boasts a spacious eat in kitchen with room for dining and relaxation. It also features a separate reception room, two double bedrooms and modern bathroom.
Council Tax Band F	EPC Rating E	
Luxborough Street is a stone's throw from the ever vibrant Marylebone High Street. Transport links can be found a short walk away at Baker Street.		

FEATURES

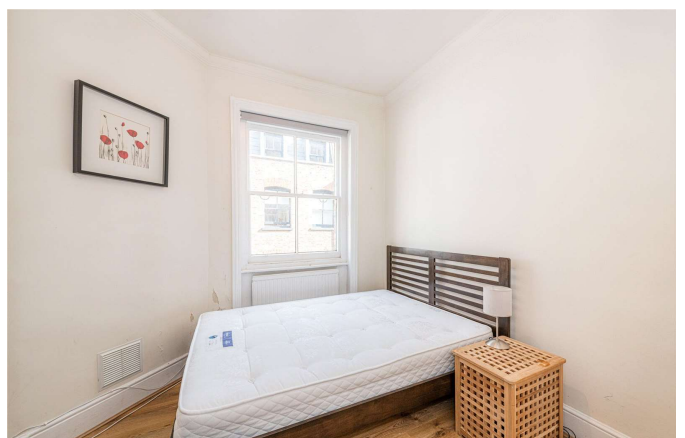
Two Bedrooms
One Reception Room
One Bathrooms
Furnished
Upper Floor

LOCATION



MARYLEBONE LETTINGS
20A Paddington Street, W1U 5QP

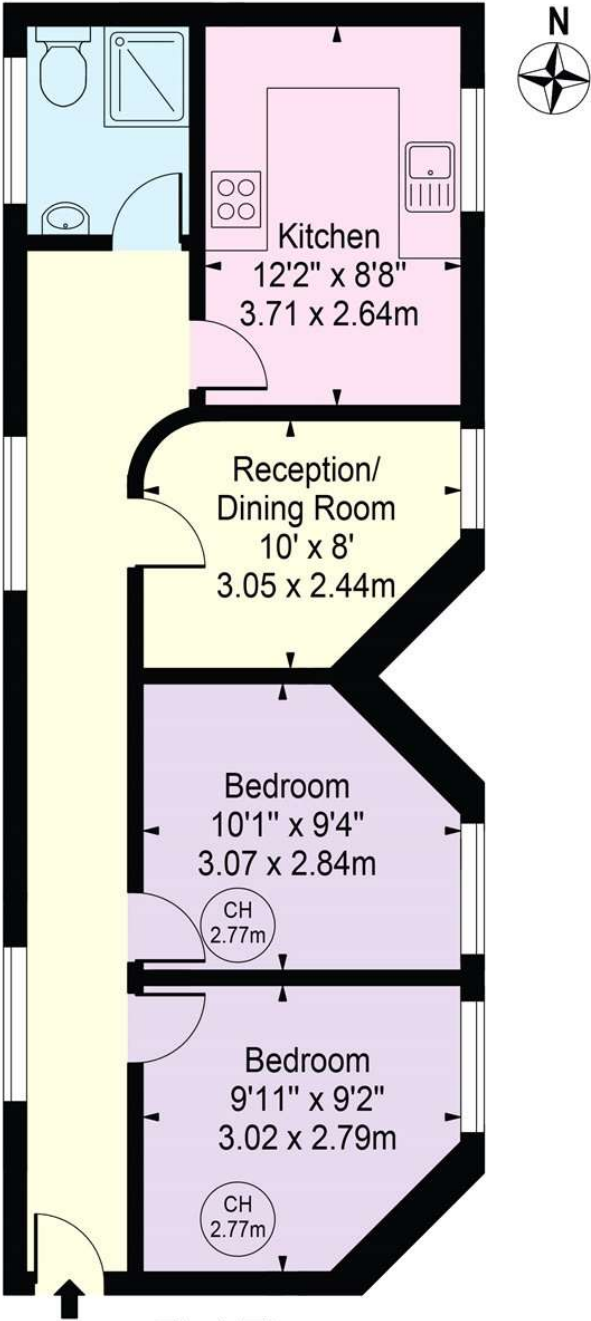
020 7486 6338
lettings.marylebone@bhhs-london.com



FLOORPLAN

Albert Mansions

Approx. Gross Internal Area 519 Sq Ft - 48.25 Sq M



First Floor

For Illustration Purposes Only - Not To Scale

This floor plan should be used as a general outline for guidance only and does not constitute in whole or in part an offer or contract. Any intending purchaser or lessee should satisfy themselves by inspection, searches, enquiries and full survey as to the correctness of each statement. Any areas, measurements or distances quoted are approximate and should not be used to value a property or be the basis of any sale or let.