



Elegant First-Floor Lateral Apartment

HYDE PARK MANSIONS

CABBELL STREET, NW1

£1,300 per week

**BERKSHIRE
HATHAWAY**
HOMESERVICES

LONDON

PROPERTY DETAILS

| | |
|---------------------------------------|-------------------------------|
| Guide Price £1,300 per week | Square Footage 1639 |
| Council Tax Band TBC | EPC Rating D |

We are delighted to present this spacious and beautifully proportioned lateral apartment, situated within the prestigious Hyde Park Mansions. The property occupies the first floor of an elegant red-brick mansion block, ideally located in the heart of Marylebone.

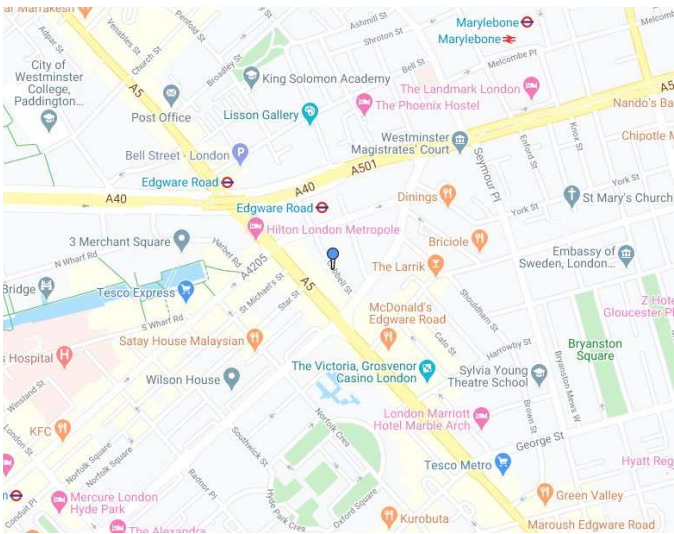
The apartment opens into a generous entrance hall offering an abundance of built-in storage, leading through to a large double reception room seamlessly combined with a thoughtfully designed kitchen and spacious dining area, all flooded with natural light. The property further comprises three well-sized double bedrooms and two bathrooms, and benefits from wooden flooring throughout, high ceilings, and a wealth of original period features.

Excellent transport links are available nearby, with Edgware Road, Marylebone, and Baker Street stations all within easy reach. A wide selection of cafés, restaurants, and local amenities can be found close by in Marylebone Village and along Edgware Road.

FEATURES

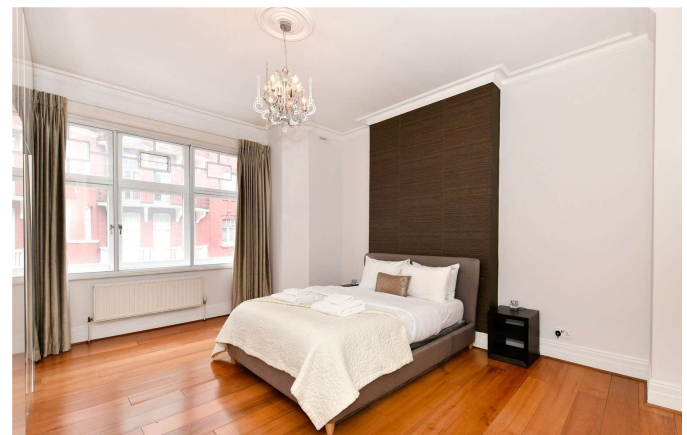
| |
|---------------------------------|
| Three Bedrooms |
| Two Reception Rooms |
| Two Bathrooms |
| Furnished |
| First Floor |
| Wood Flooring |
| Elegant Red-Brick Mansion Block |
| Heart of Marylebone |

LOCATION



HYDE PARK LETTINGS
24-25 Albion Street, W2 2AX

020 7262 2030
lettings.hydepark@bhhs-london.com

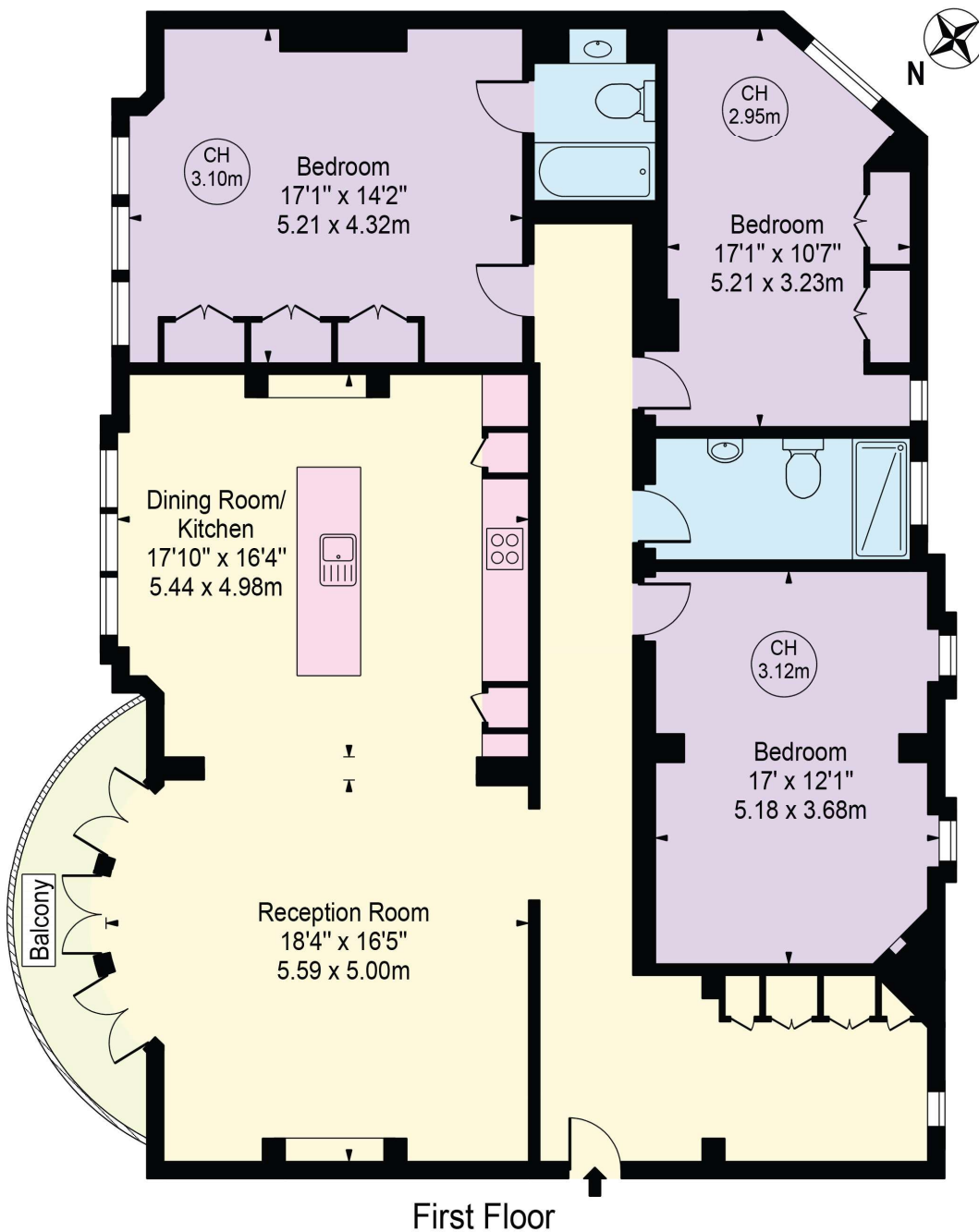


FLOORPLAN

Hyde Park Mansions

Approx. Gross Internal Area 1639 Sq Ft - 152.27 Sq M

Approx. External Area Of Balcony 58 Sq Ft - 5.39 Sq M



For Illustration Purposes Only - Not To Scale

This floor plan should be used as a general outline for guidance only and does not constitute in whole or in part an offer or contract. Any intending purchaser or lessee should satisfy themselves by inspection, searches, enquiries and full survey as to the correctness of each statement. Any areas, measurements or distances quoted are approximate and should not be used to value a property or be the basis of any sale or let.