



Elegant Three Bedroom Interior Designed Split Level  
Apartment in a Classical Heritage Building

# WESTBOURNE TERRACE

BAYSWATER, W2

Asking Price  
£2,950,000

**BERKSHIRE  
HATHAWAY**  
HOMESERVICES

LONDON

# PROPERTY DETAILS

<b>Guide Price</b> £2,950,000	<b>Square Footage</b> 1849	<p>Fabulous three bedroom apartment with amazing ceiling heights on both the ground and first floor of a particularly well maintained share of freehold building located close to Hyde Park and excellent local transport amenities.</p> <p>With a large kitchen breakfast room on the raised ground floor and a beautifully proportioned first floor reception room, the property is ideal for entertaining. There are 2 large double en suite bedrooms and a useful third bedroom and guest WC. The apartment benefits from a patio, roof terrace and balcony.</p>
<b>Council Tax Band</b> D	<b>EPC</b> C	
<b>Ground Rent</b> Peppercorn	<b>Service Charge</b> £3,000 pa	
<b>Tenure</b> Leasehold 989 years remaining		

# FEATURES

Three Bedrooms
One Reception Room
Three Bathrooms
Off Street Parking
Roof Terrace
Balcony
Roof Terrace, Balcony
Town/City

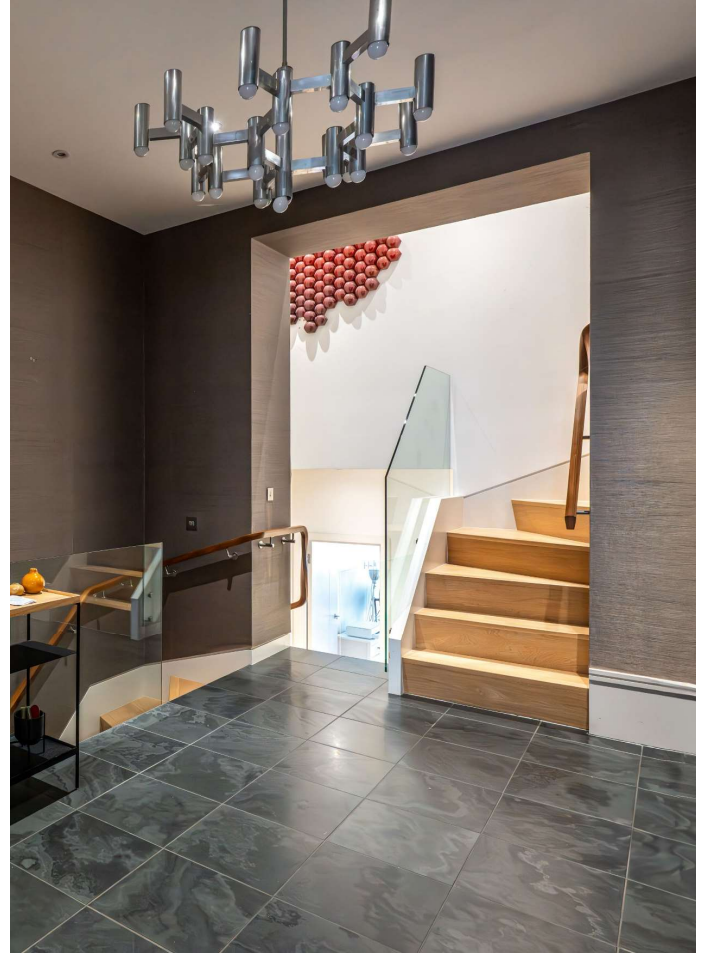
# LOCATION



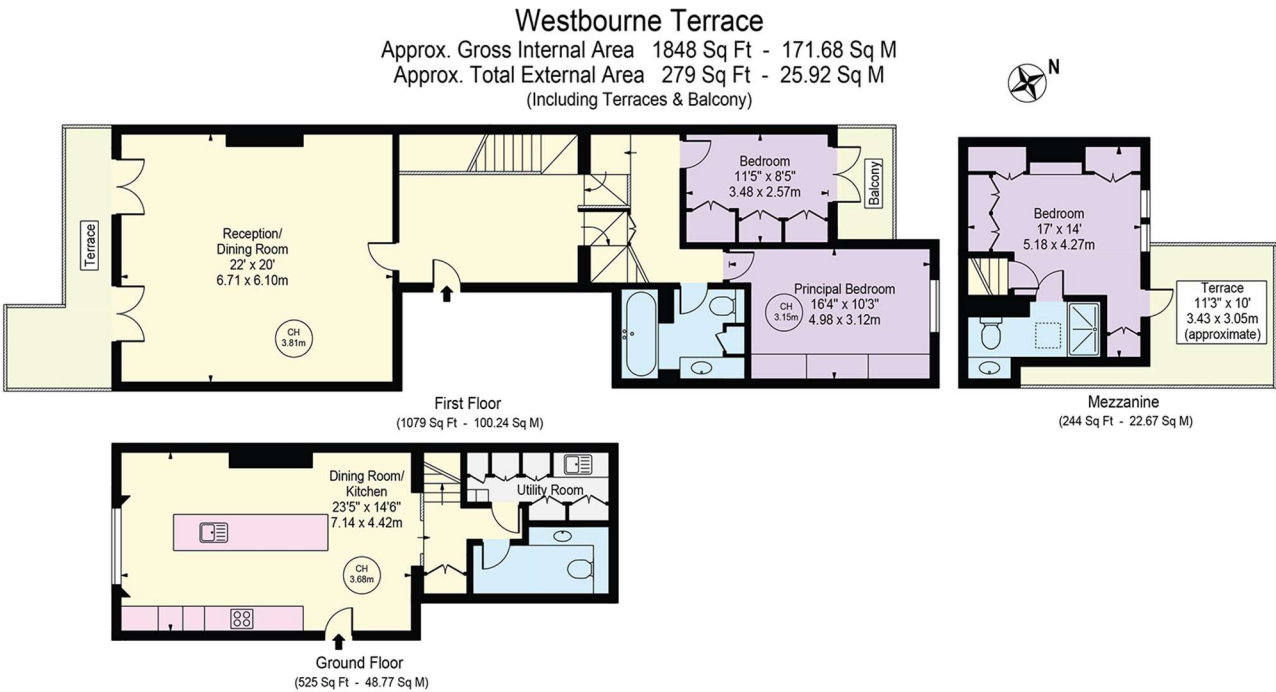
**HYDE PARK SALES**  
24-25 Albion Street, W2 2AX

020 7262 2030  
sales.hydepark@bhhs-london.com





# FLOORPLAN



For Illustration Purposes Only - Not To Scale

This floor plan should be used as a general outline for guidance only and does not constitute in whole or in part an offer or contract.  
Any intending purchaser or lessee should satisfy themselves by inspection, searches, enquiries and full survey as to the correctness of each statement.  
Any areas, measurements or distances quoted are approximate and should not be used to value a property or be the basis of any sale or let.  
Copyright Morriarti Photography & Design LTD