



Immaculately Maintained Six Bedroom Family
House Close to Hyde Park

HYDE PARK STREET

HYDE PARK ESTATE, W2

Guide Price
£5,950,000

**BERKSHIRE
HATHAWAY**
HOMESERVICES

LONDON

PROPERTY DETAILS

Guide Price £5,950,000	Square Footage 4312 Sq Ft	<p>An exceptionally spacious family house which is extremely well presented throughout offering excellent entertaining areas, a home cinema, swimming pool. large principal bedroom suite, 5 further bedrooms, 4 further bathrooms and off street car parking for 2 cars.</p> <p>Hyde Park Street is extremely well positioned for access to the wide open spaces of Hyde Park and the excellent local transport connections of Marble Arch tube station and the Elizabeth line at Paddington Station. The boutique shops and cafes of Connaught Village are a short walk away.</p>
Council Tax Band H	EPC C	
Tenure Freehold		

FEATURES

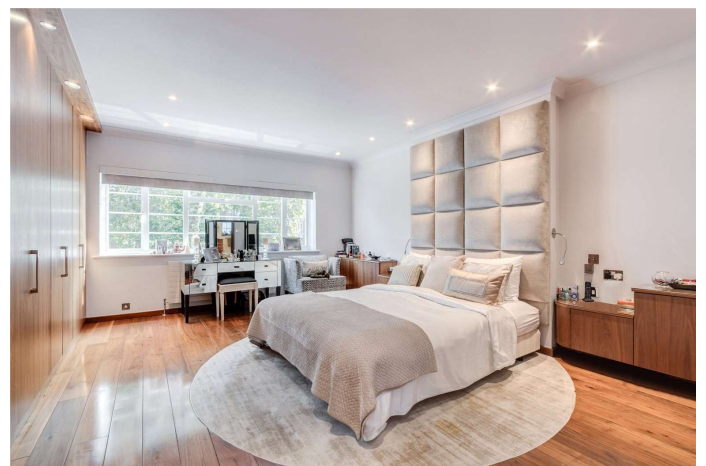
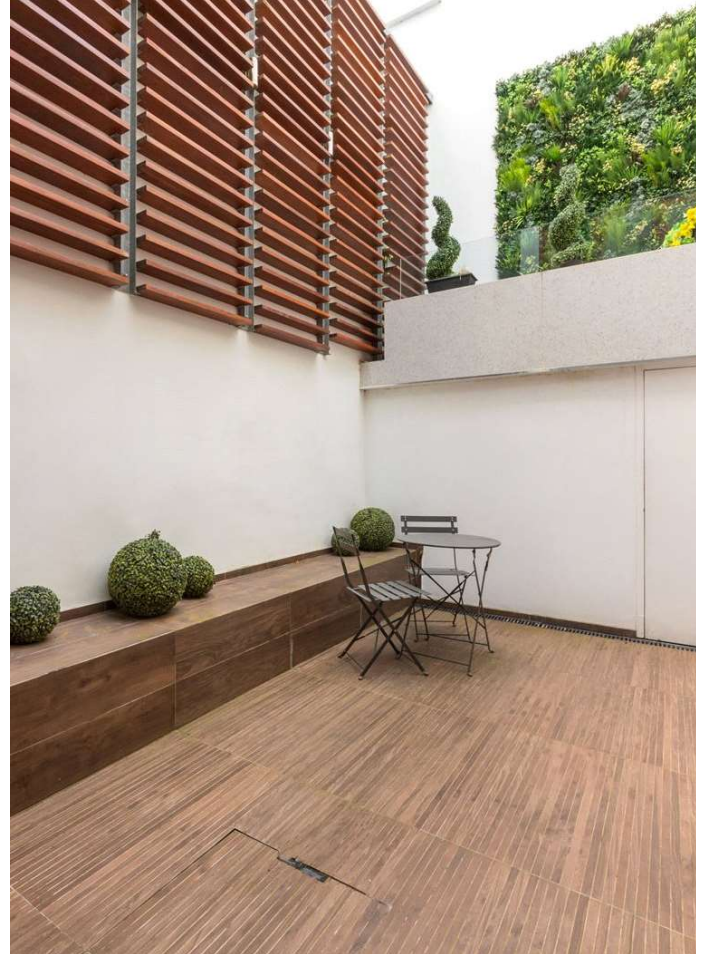
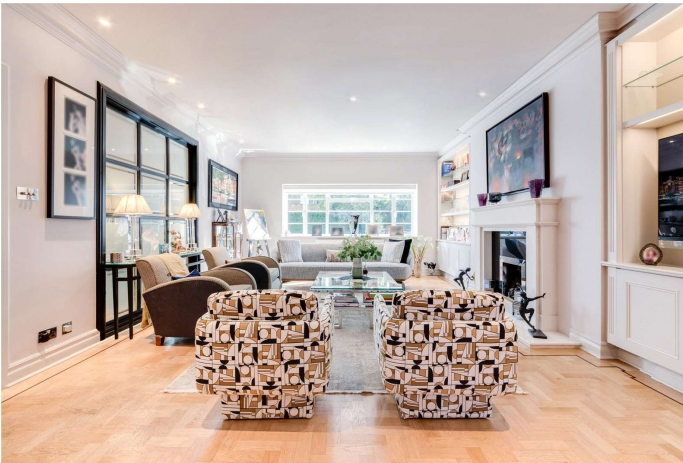
- Six Bedrooms
- Three Reception Rooms
- Five Bathrooms
- Swimming Pool
- Terraced
- Off Street Parking
- Patio/ Balcony
- House

LOCATION



HYDE PARK SALES
24-25 Albion Street, W2 2AX

020 7262 2030
sales.hydepark@bhhs-london.com



FLOORPLAN

Hyde Park Street

Approx. Gross Internal Area 4312 Sq Ft - 400.58 Sq M
(Excluding Store)

Approx. External Area 664 Sq Ft - 61.69 Sq M
(Including Balconies & Patios)



For Illustration Purposes Only - Not To Scale

This floor plan should be used as a general outline for guidance only and does not constitute in whole or in part an offer or contract. Any intending purchaser or lessee should satisfy themselves by inspection, searches, enquiries and full survey as to the correctness of each statement. Any areas, measurements or distances quoted are approximate and should not be used to value a property or be the basis of any sale or let.