



Double Width 11 Bedroom House Close to Hyde Park

ALBION STREET

HYDE PARK ESTATE, W2

Asking Price
£8,500,000

**BERKSHIRE
HATHAWAY**
HOMESERVICES

LONDON

PROPERTY DETAILS

Guide Price £8,500,000	Square Footage 6218
Council Tax Band H	EPC C
Tenure Freehold	

This exceptionally rare double house is laterally connected with clever architect designed extensions, offering flexible accommodation to suit a large family. Set over 6,200 square feet, the property consists of 11 bedrooms, 6 reception rooms, 8 bathrooms and 3 private outside spaces.

Albion Street stands as one of Connaught Village's most sought-after addresses, comprised of elegant period houses and picturesque mews cul-de-sacs. This location is a convenient short stroll to Marble Arch underground station (Central Line), the vibrant amenities of Oxford Street and the West End, as well as the extensive transport options of Paddington Station, including the Heathrow Express and Elizabeth Line.

FEATURES

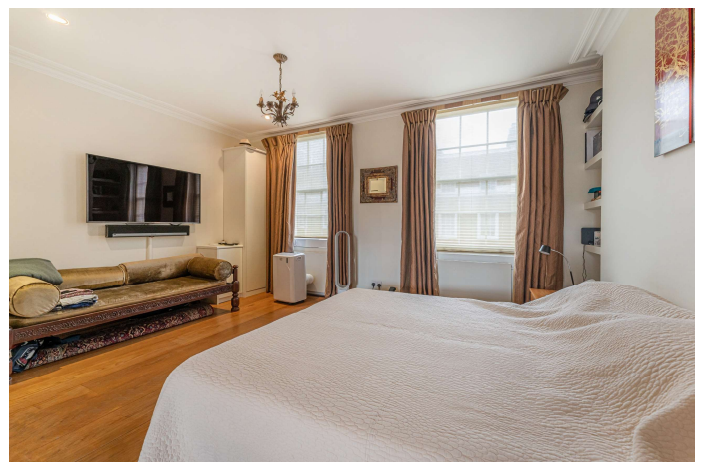
11 Bedrooms
Six Reception Rooms
Eight Bathrooms
Residents Parking
Patio
Roof Terrace
Conservatory
Period

LOCATION



HYDE PARK SALES
24-25 Albion Street, W2 2AX

020 7262 2030
sales.hydepark@bhhs-london.com



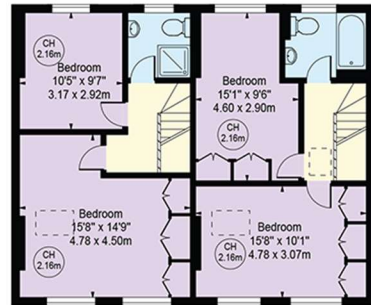
FLOORPLAN

Albion Street

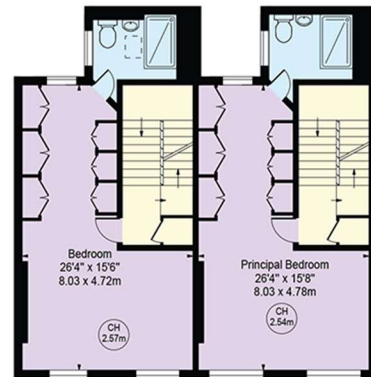
Approx. Gross Internal Area 5675 Sq Ft - 527.22 Sq M

Approx. Total External Area 706 Sq Ft - 65.59 Sq M

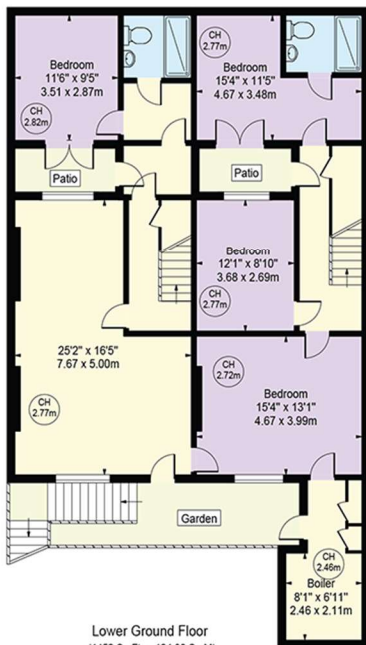
(Including Patios, Gardens & Terraces)



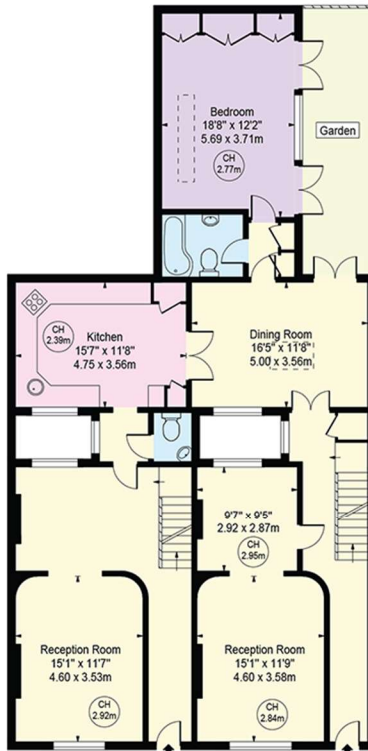
Third Floor
(837 Sq Ft - 77.76 Sq M)



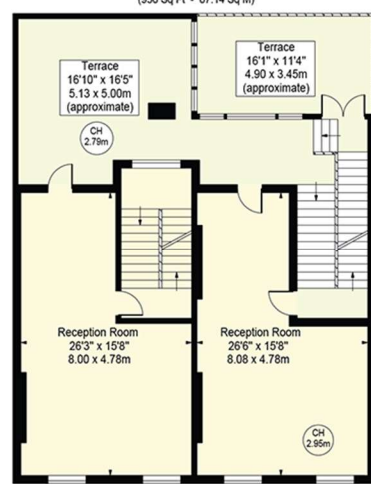
Second Floor
(938 Sq Ft - 87.14 Sq M)



Lower Ground Floor
(1452 Sq Ft - 134.90 Sq M)



Ground Floor
(1684 Sq Ft - 156.45 Sq M)



First Floor
(764 Sq Ft - 70.98 Sq M)

For Illustration Purposes Only - Not To Scale

This floor plan should be used as a general outline for guidance only and does not constitute in whole or in part an offer or contract. Any intending purchaser or lessee should satisfy themselves by inspection, searches, enquiries and full survey as to the correctness of each statement. Any areas, measurements or distances quoted are approximate and should not be used to value a property or be the basis of any sale or let.

Copyright Morriarti Photography & Design LTD