



ONE BEDROOM IN THE ICONIC ST PANCRAS CHAMBERS

ST. PANCRAS CHAMBERS

EUSTON ROAD, NW1

Asking Price
£725,000

**BERKSHIRE
HATHAWAY**
HOMESERVICES

LONDON

PROPERTY DETAILS

Guide Price £725,000	Square Footage 686
Council Tax Band F	EPC D
Ground Rent TBC	Service Charge TBC
Tenure Leasehold	

A spacious and charming one bedroom apartment in the iconic Grade I Listed St Pancras Chambers.

This historic building previously housed the Midland Grand Hotel, designed by George Gilbert Scott, which opened in 1873 and is widely accepted as one of the finest examples of Victorian Gothic Architecture.

St Pancras Chambers offers 24-hour concierge services, as well as access to room service from the five-star St Pancras Renaissance Hotel, which also includes two restaurants, two bars, function rooms and ballroom. Residents can also access the fitness centre and spa with therapy pool by separate subscription.

Located within St. Pancras International and at the centre of King's Cross with its superb selection of shops, cafés and restaurants, transport links also include King's Cross Station (Northern, Victoria, Hammersmith & City, Metropolitan, Circle and Piccadilly lines, National Rail) providing frequent services into the City and the West End.

FEATURES

One Bedroom
One Reception Room
One Bathroom
Concierge/ Porter
24 Hour Security
Lift
Wood Flooring
High Ceilings

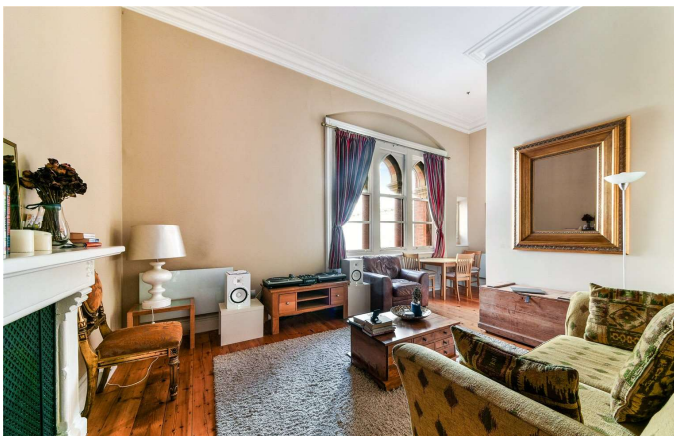
LOCATION



KINGS CROSS SALES

Unit 4,6 Pancras Square, N1C 4AG

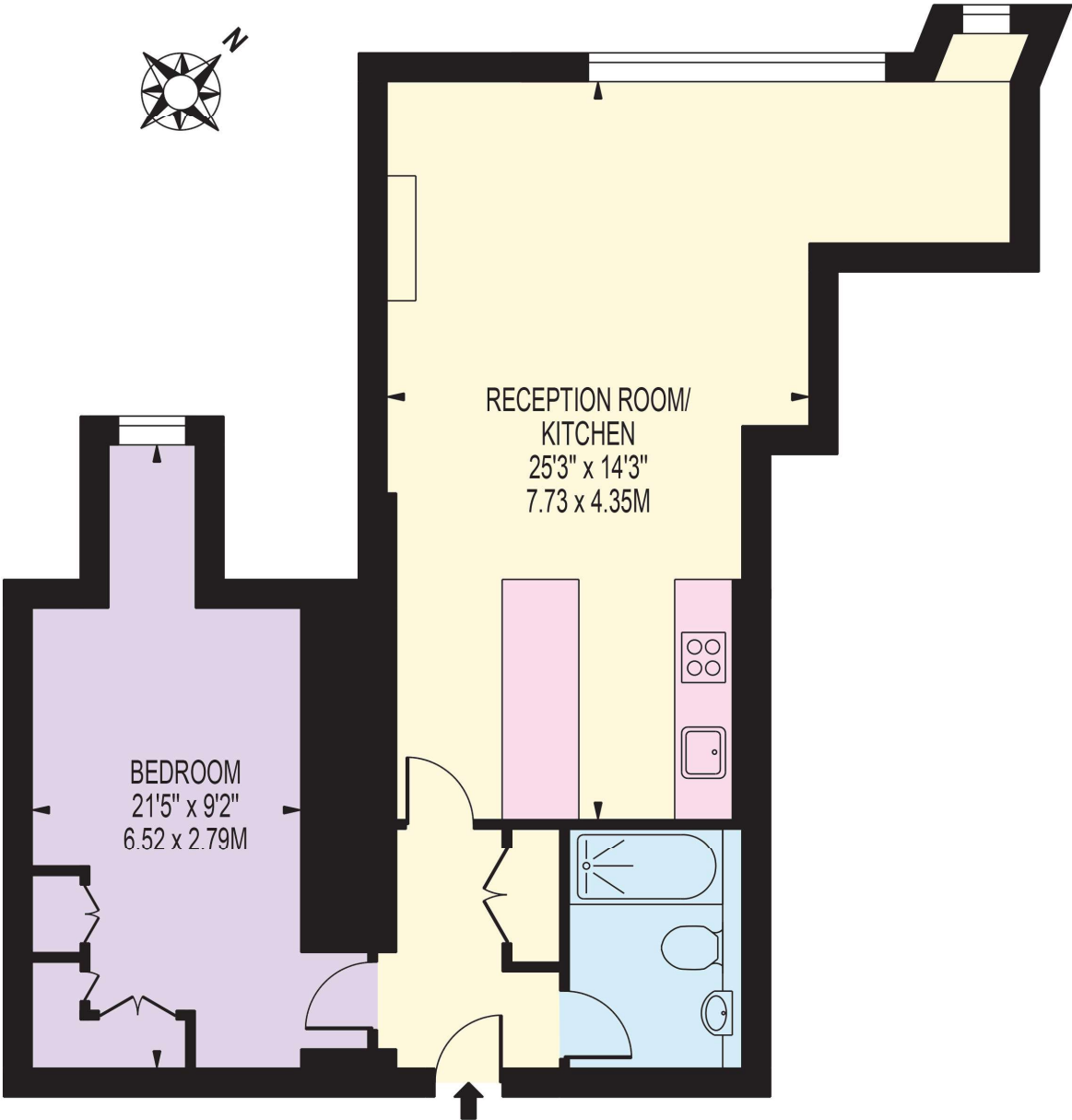
020 7467 2020
sales.kingscross@bhhs-london.com



FLOORPLAN

ST. PANCRAS CHAMBERS

APPROXIMATE GROSS INTERNAL FLOOR AREA: 686 SQ FT - 63.77 SQ M



THIRD FLOOR

FOR ILLUSTRATION PURPOSES ONLY

THIS FLOOR PLAN SHOULD BE USED AS A GENERAL OUTLINE FOR GUIDANCE ONLY AND DOES NOT CONSTITUTE IN WHOLE OR IN PART AN OFFER OR CONTRACT. ANY INTENDING PURCHASER OR LESSEE SHOULD SATISFY THEMSELVES BY INSPECTION, SEARCHES, ENQUIRIES AND FULL SURVEY AS TO THE CORRECTNESS OF EACH STATEMENT. ANY AREAS, MEASUREMENTS OR DISTANCES QUOTED ARE APPROXIMATE AND SHOULD NOT BE USED TO VALUE A PROPERTY OR BE THE BASIS OF ANY SALE OR LET.