



South Facing One Bedroom Apartment in Portered Block

PARK WEST

EDGWARE ROAD, W2

Offers in excess of
£400,000

**BERKSHIRE
HATHAWAY**
HOMESERVICES

LONDON

PROPERTY DETAILS

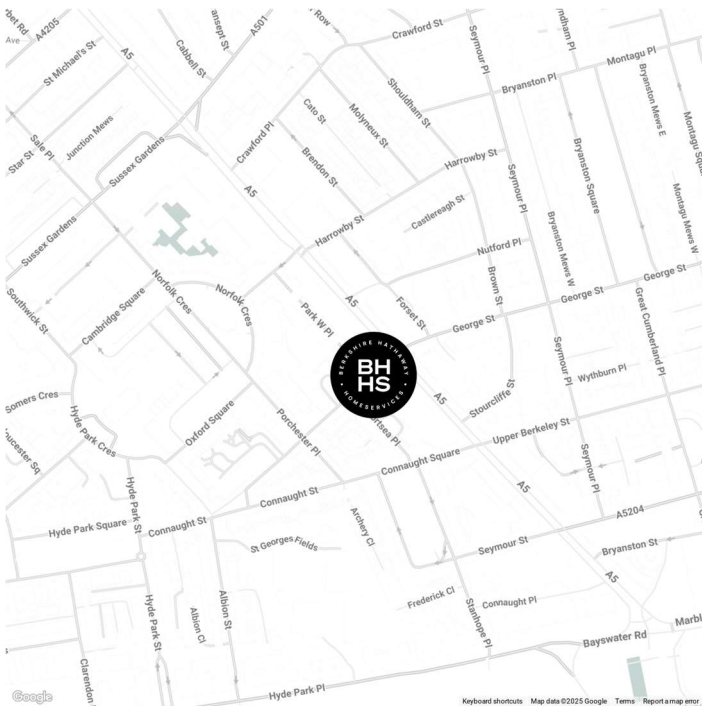
| | |
|---|---------------------------------------|
| Guide Price £400,000 | Square Footage 465 |
| Council Tax Band D | EPC C |
| Ground Rent £200 pa | Service Charge £5,494.86 pa |
| Tenure Leasehold 78 years remaining | |

This south facing apartment is bright and spacious throughout and benefits from 24-hour porters, lift access and a modern fitted kitchen and bathroom. The property is centrally located too and can be found within walking distance of multiple tube stations, Hyde Park and Oxford Street making it an ideal first home or buy to let investment.

FEATURES

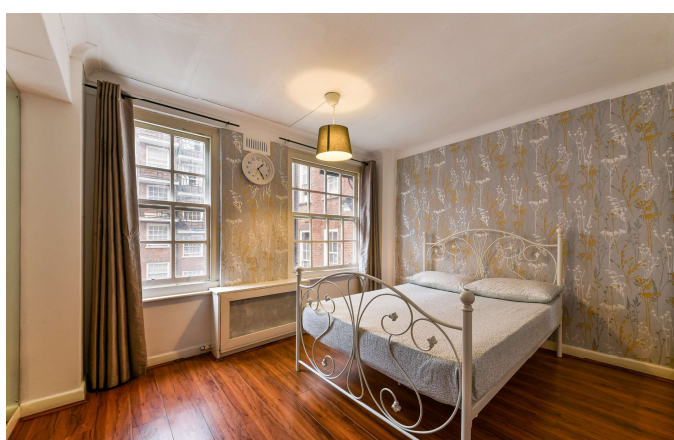
- One Bedroom
- One Reception Room
- One Bathroom
- Upper Floor
- Concierge/Porter
- Lift
- 24 Hour Security

LOCATION



HYDE PARK SALES
24-25 Albion Street, W2 2AX

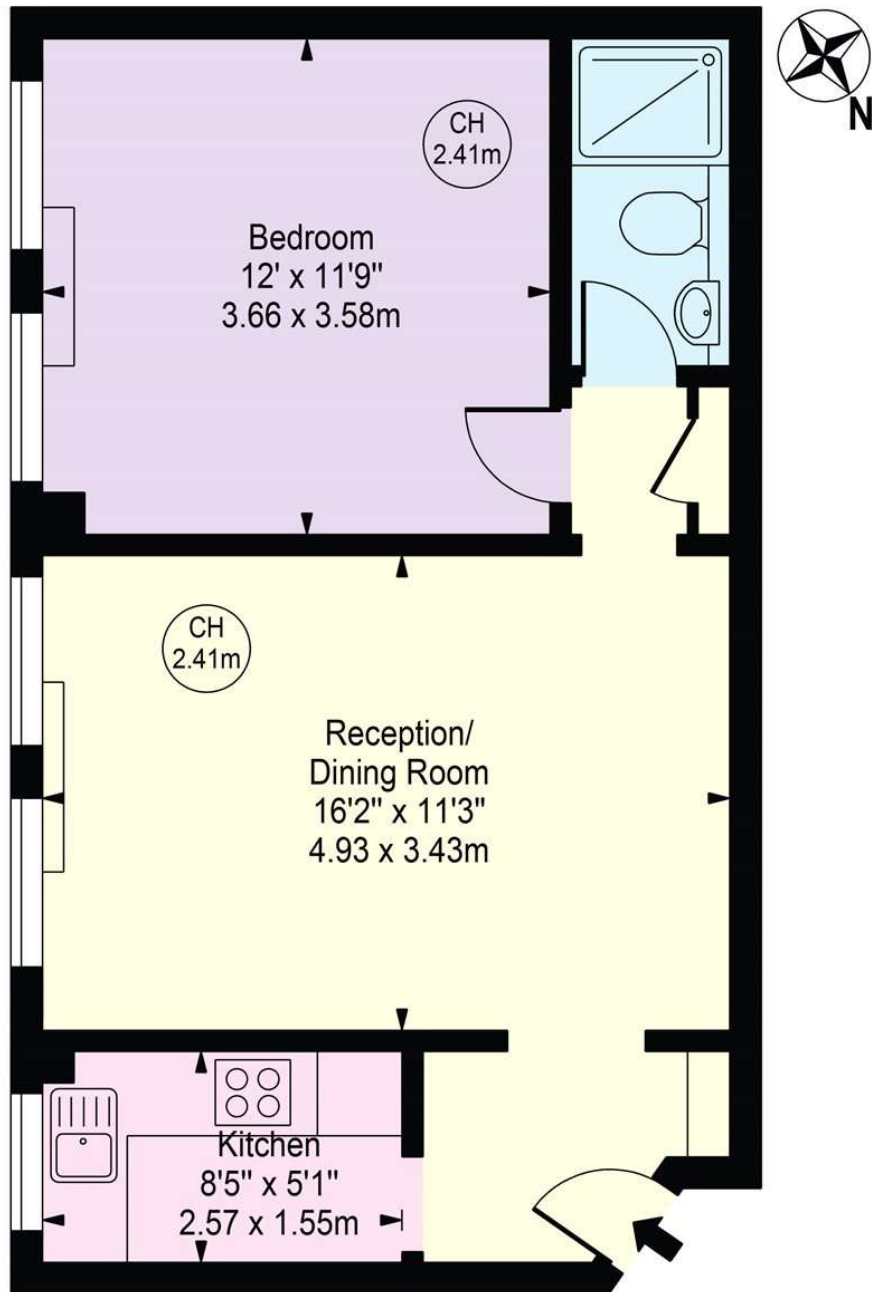
020 7262 2030
sales.hydepark@bhhs-london.com



FLOORPLAN

Park West

Approx. Gross Internal Area 465 Sq Ft - 43.20 Sq M



Fourth Floor

For Illustration Purposes Only - Not To Scale

This floor plan should be used as a general outline for guidance only and does not constitute in whole or in part an offer or contract. Any intending purchaser or lessee should satisfy themselves by inspection, searches, enquiries and full survey as to the correctness of each statement. Any areas, measurements or distances quoted are approximate and should not be used to value a property or be the basis of any sale or let.