



An Extensive and Grand Townhouse Adjacent to
Hyde Park

HYDE PARK STREET

HYDE PARK, W2

£2,307.69 per
week

**BERKSHIRE
HATHAWAY**
HOMESERVICES

LONDON

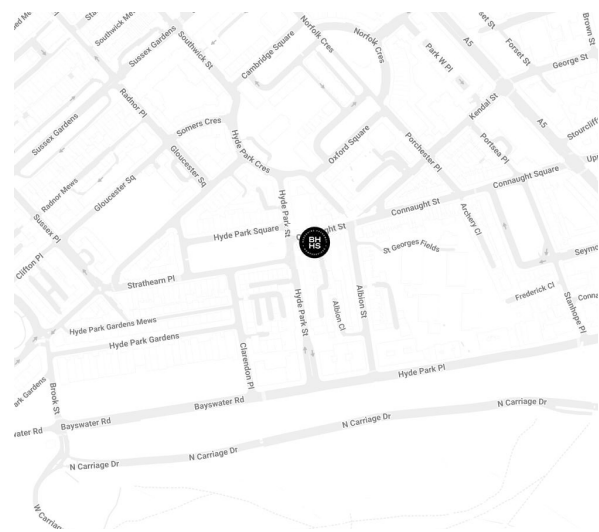
PROPERTY DETAILS

Guide Price £2,307.69 per week	Square Footage 2,837	<p>A large, double fronted town house, boasting over 2,800 sq ft of space. The property offers two reception rooms as well as large eat-in kitchen, there is a double garage to the lower floor as well as an additional room and separate access. The upper floors offer four further well sized bedrooms, three bathrooms, and one en-suite. The property has excellent storage throughout.</p>
Council Tax Band H	EPC Rating D	

FEATURES

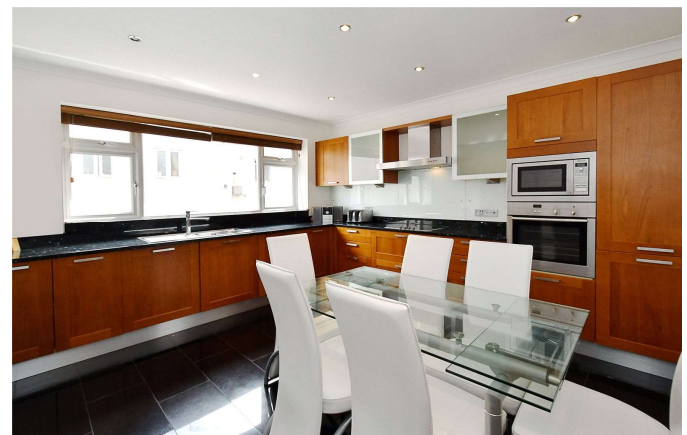
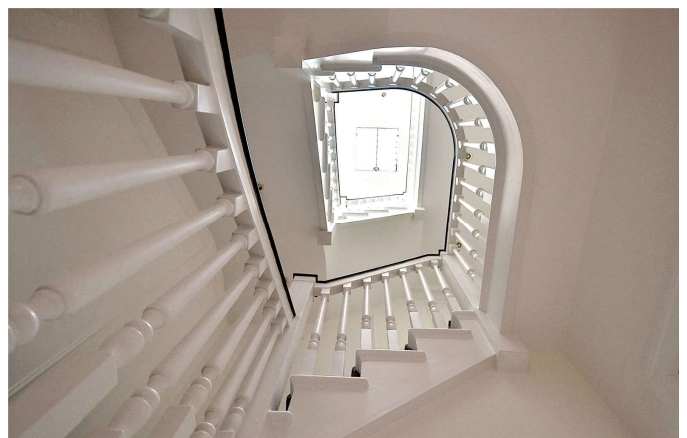
- Five Bedrooms
- Two Reception Rooms
- Four Bathrooms
- Garage
- Terraced
- Balcony

LOCATION



HYDE PARK LETTINGS
24-25 Albion Street, W2 2AX

020 7262 2030
lettings.hydepark@bhhs-london.com



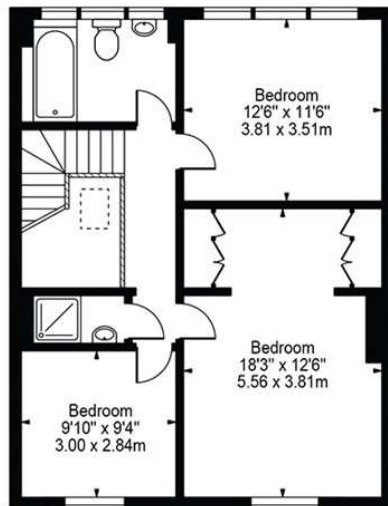
FLOORPLAN

Hyde Park Street

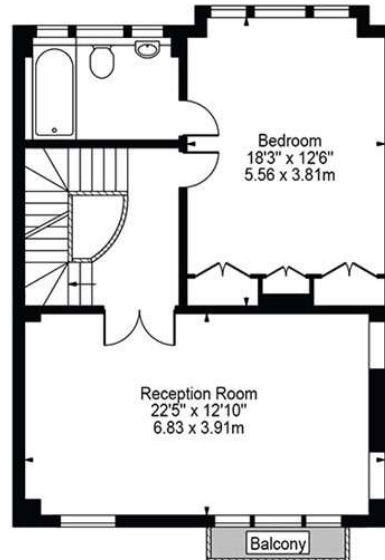
Approx. Gross Internal Area 2810 Sq Ft - 261.06 Sq M
(Including Restricted Height Area, Garage, Excluding Shed & Store)

Approx. Gross Internal Area 2476 Sq Ft - 230.03 Sq M
(Excluding Restricted Height Area, Garage, Shed & Store)

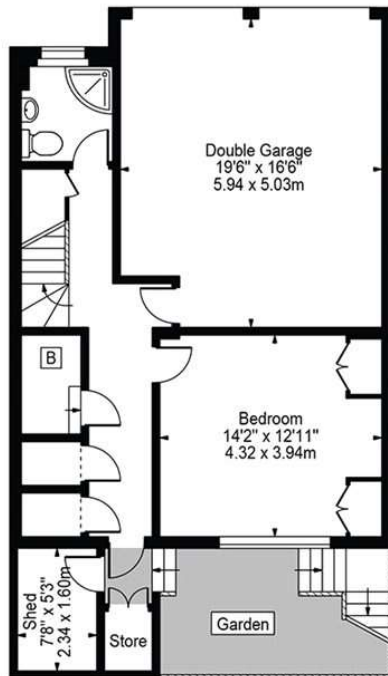
Approx. Gross Internal Area Of Garage 310 Sq Ft - 28.80 Sq M
Approx. Gross Internal Area Of Shed & Store 52 Sq Ft - 4.83 Sq M



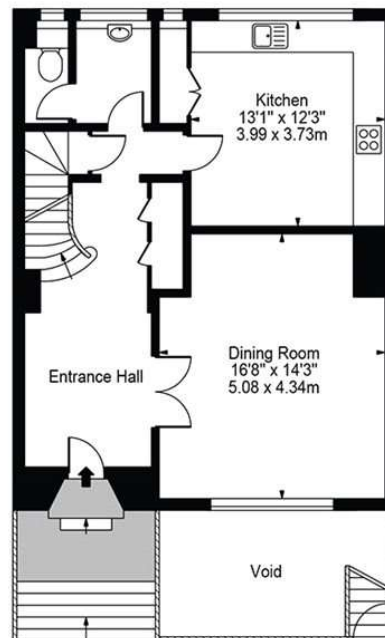
Second Floor



First Floor



Lower Ground Floor



Ground Floor

For Illustration Purposes Only - Not To Scale

This floor plan should be used as a general outline for guidance only and does not constitute in whole or in part an offer or contract. Any intending purchaser or lessee should satisfy themselves by inspection, searches, enquiries and full survey as to the correctness of each statement. Any areas, measurements or distances quoted are approximate and should not be used to value a property or be the basis of any sale or let.