



One Bedroom with Balcony in Award Winning
Fenman House

FENMAN HOUSE

KING'S CROSS, N1C

Asking Price

£795,000

**BERKSHIRE
HATHAWAY**
HOMESERVICES

LONDON

PROPERTY DETAILS

Guide Price £795,000	Square Footage 478
Council Tax Band E	EPC B
Ground Rent £600 pa	Service Charge £5000 pa
Tenure Leasehold 243 Years 7 Months	

A bright and spacious one bedroom apartment in Fenman House, designed by award winning architects Maccreanor Lavington and Johnson Naylor.

Located on the fourth floor and boasting herringbone floors throughout, the property is comprised of one double bedroom, large bathroom, and generous kitchen/reception area leading onto a private balcony.

Residents of Fenman House also benefit from concierge service and a landscaped residents' rooftop garden designed by Chelsea Flower Show award winner Tom Stuart-Smith.

Nearby transport links include St. Pancras International and King's Cross Station (Northern, Victoria, Hammersmith & City, Metropolitan, Circle and Piccadilly lines, National Rail) providing frequent services into the City and the West End.

Vibrant Coal Drops Yard and Granary Square are also moments away.

FEATURES

One Bedroom
One Reception
One Bathroom
Concierge/Porter
Lift
Upper Floor
Roof Terrace
Balcony

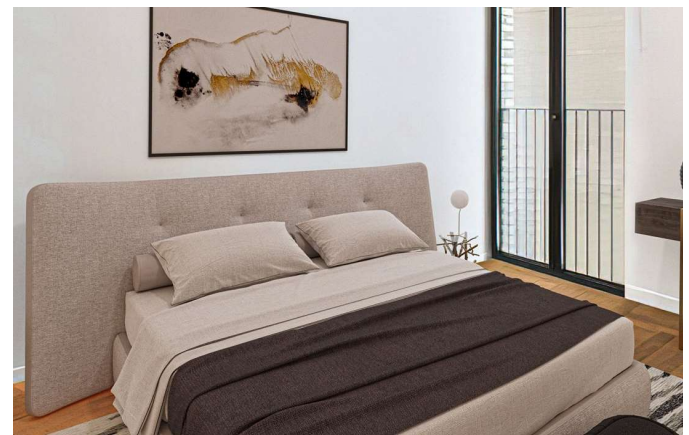
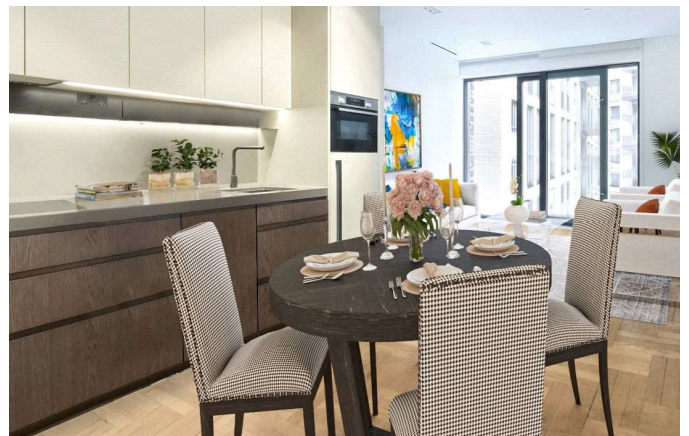
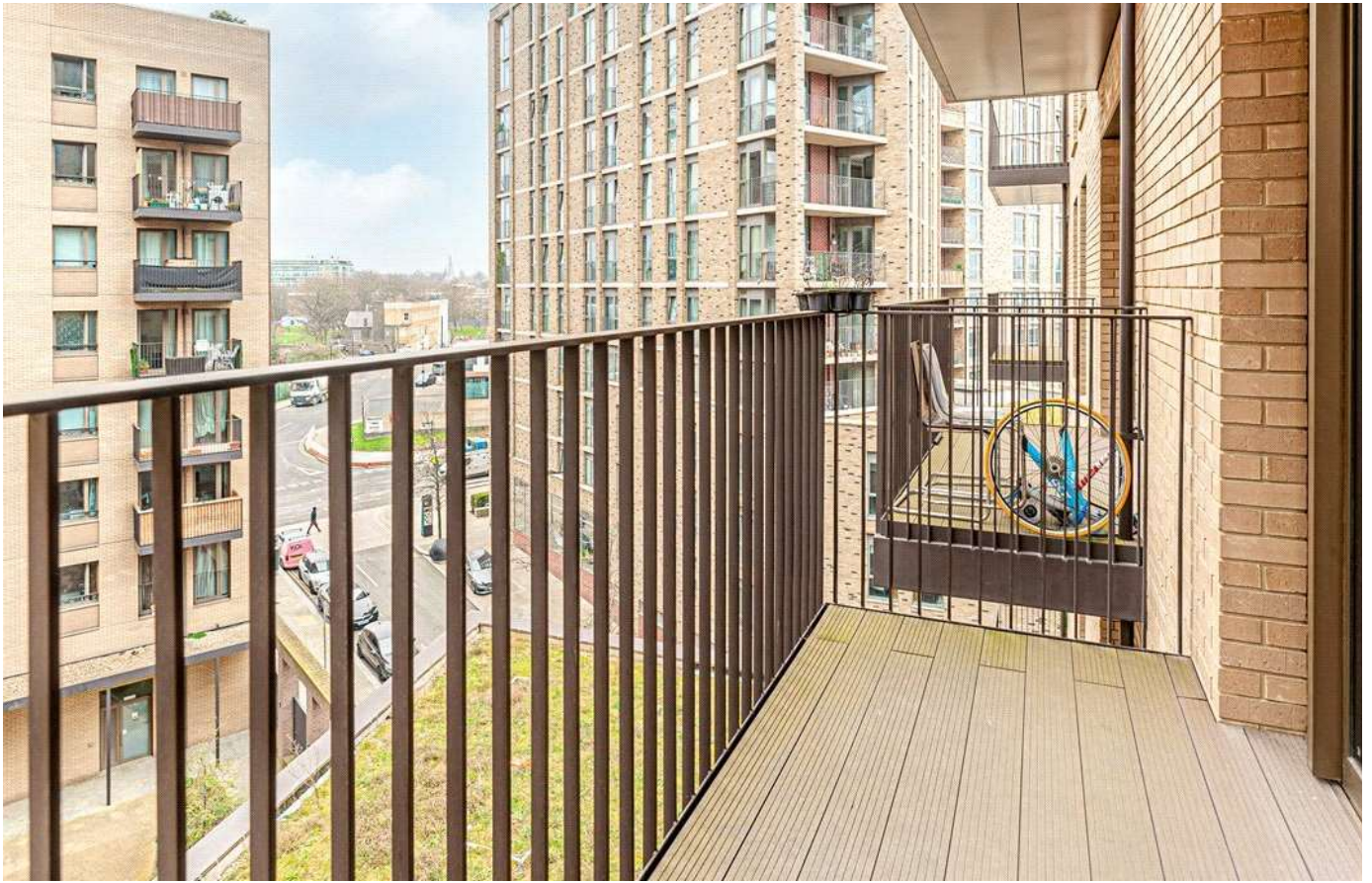
LOCATION



KINGS CROSS SALES

Unit 4,6 Pancras Square, N1C 4AG

020 7467 2020
sales.kingscross@bhhs-london.com



FLOORPLAN

FENMAN HOUSE

APPROXIMATE GROSS INTERNAL FLOOR AREA: 478 SQ FT - 44.37 SQ M



FOURTH FLOOR

FOR ILLUSTRATION PURPOSES ONLY

THIS FLOOR PLAN SHOULD BE USED AS A GENERAL OUTLINE FOR GUIDANCE ONLY AND DOES NOT CONSTITUTE IN WHOLE OR IN PART AN OFFER OR CONTRACT. ANY INTENDING PURCHASER OR LESSEE SHOULD SATISFY THEMSELVES BY INSPECTION, SEARCHES, ENQUIRIES AND FULL SURVEY AS TO THE CORRECTNESS OF EACH STATEMENT. ANY AREAS, MEASUREMENTS OR DISTANCES QUOTED ARE APPROXIMATE AND SHOULD NOT BE USED TO VALUE A PROPERTY OR BE THE BASIS OF ANY SALE OR LET.