



**Two Bedroom with Balcony in Prime
Plimsoll Building**

Plimsoll Building

KING'S CROSS, N1C

Asking Price
£1,150,000

**BERKSHIRE
HATHAWAY**
HOMESERVICES

LONDON

PROPERTY DETAILS

Guide Price £1,150,000	Square Footage 932 Sq Ft
Council Tax Band G	EPC B
Ground Rent £650	Service Charge £8,000
Tenure Leasehold 240 Years 9 Months	

A spacious two bedroom apartment with balcony and views of the Regent's Canal on the seventh floor of one of King's Cross' most popular developments, the Plimsoll Building.

Private Underground Parking is offered by separate negotiation.

Residents benefit from 24-hour concierge service, private dining space and lounge, a well-equipped fitness suite, beautiful courtyard garden, roof terrace, and are moments from all vibrant King's Cross has to offer.

FEATURES

- Two Bedrooms
- One Receptions
- Two Bathrooms
- Private Parking
- Concierge/Porter
- Balcony
- 24 Hour Security
- Communal Gardens

LOCATION



KINGS CROSS SALES
Unit 4,6 Pancras Square, N1C 4AG

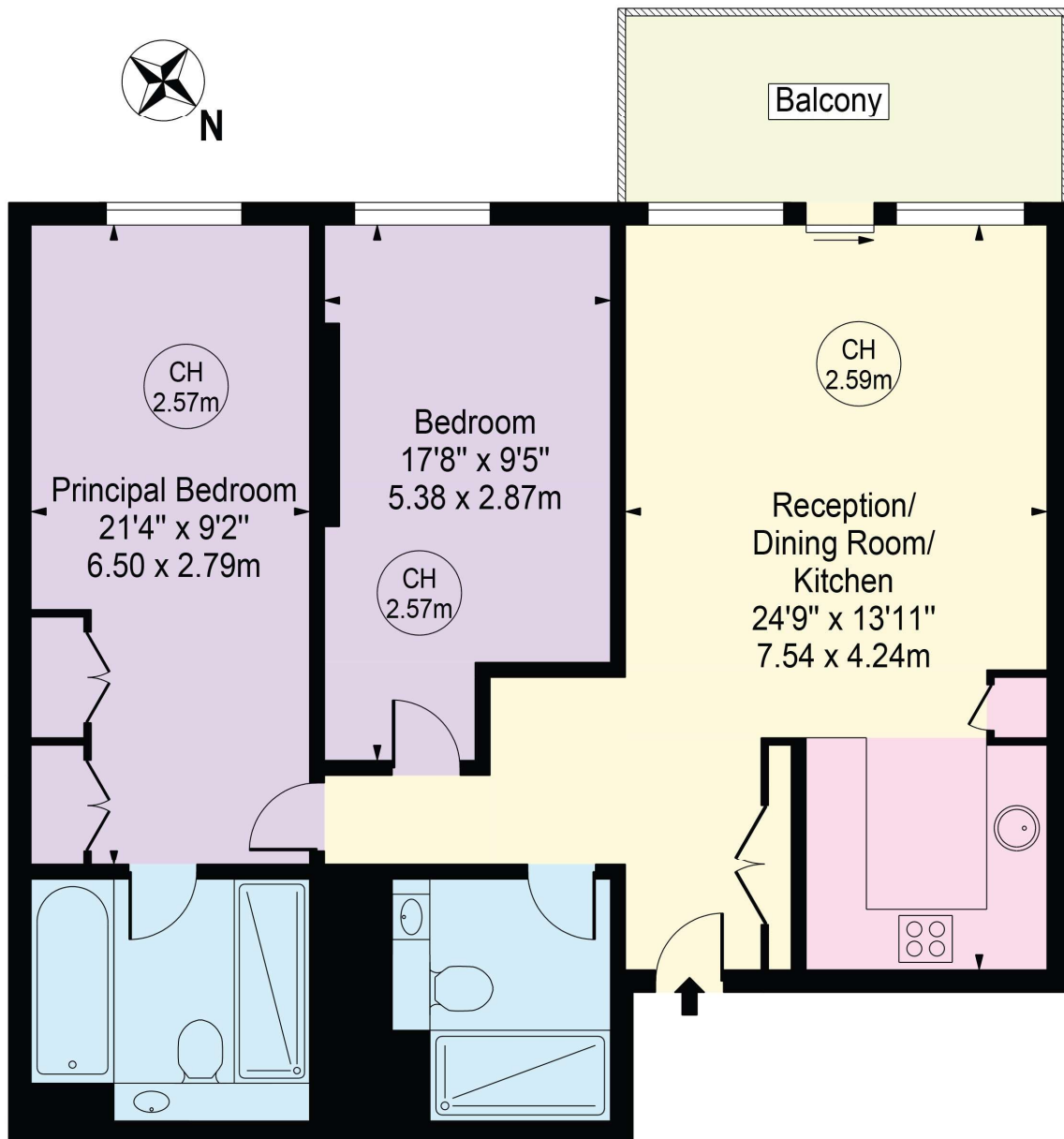
020 7467 2020
sales.kingscross@bhhs-london.com



FLOORPLAN

Plimsoll Building

Approx. Gross Internal Area 932 Sq Ft - 86.59 Sq M
Approx. External Area Of Balcony 91 Sq Ft - 8.45 Sq M



Seventh Floor

For Illustration Purposes Only - Not To Scale

This floor plan should be used as a general outline for guidance only and does not constitute in whole or in part an offer or contract.
Any intending purchaser or lessee should satisfy themselves by inspection, searches, enquiries and full survey as to the correctness of each statement.
Any areas, measurements or distances quoted are approximate and should not be used to value a property or be the basis of any sale or let.

Copyright Morriarti Photography & Design LTD