



One Bedroom with Balcony in Prime Plimsoll Building

# PLIMSOLL BUILDING

1 HANDYSIDE STREET, N1C

Asking Price  
£750,000

**BERKSHIRE  
HATHAWAY**  
HOMESERVICES

LONDON

# PROPERTY DETAILS

<b>Guide Price</b> £750,000	<b>Square Footage</b> 565
<b>Council Tax Band</b> F	<b>EPC</b> B
<b>Ground Rent</b> £500 pa	<b>Service Charge</b> £5000 pa
<b>Tenure</b> Leasehold	

A spacious one bedroom apartment with balcony on the eighth floor of one of King's Cross' most popular developments, the Plimsoll Building.

Residents benefit from 24-hour concierge service, private dining space and lounge, a well-equipped fitness suite, beautiful courtyard garden, roof terrace, and are moments from all vibrant King's Cross has to offer.

## FEATURES

- One Bedroom
- One Reception Room
- One Bathroom
- Lift
- Concierge/porter
- Upper Floor
- Roof Terrace
- Balcony

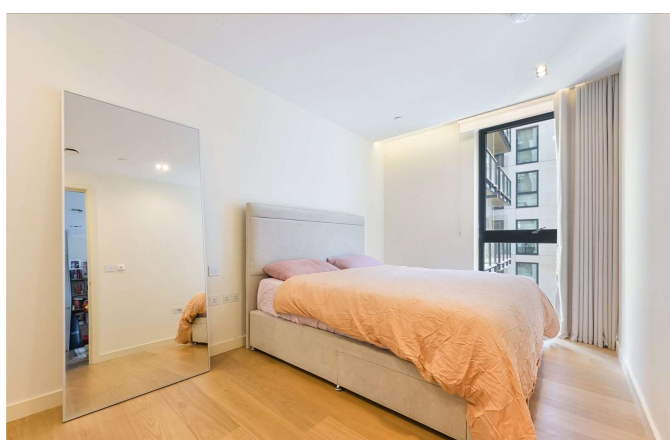
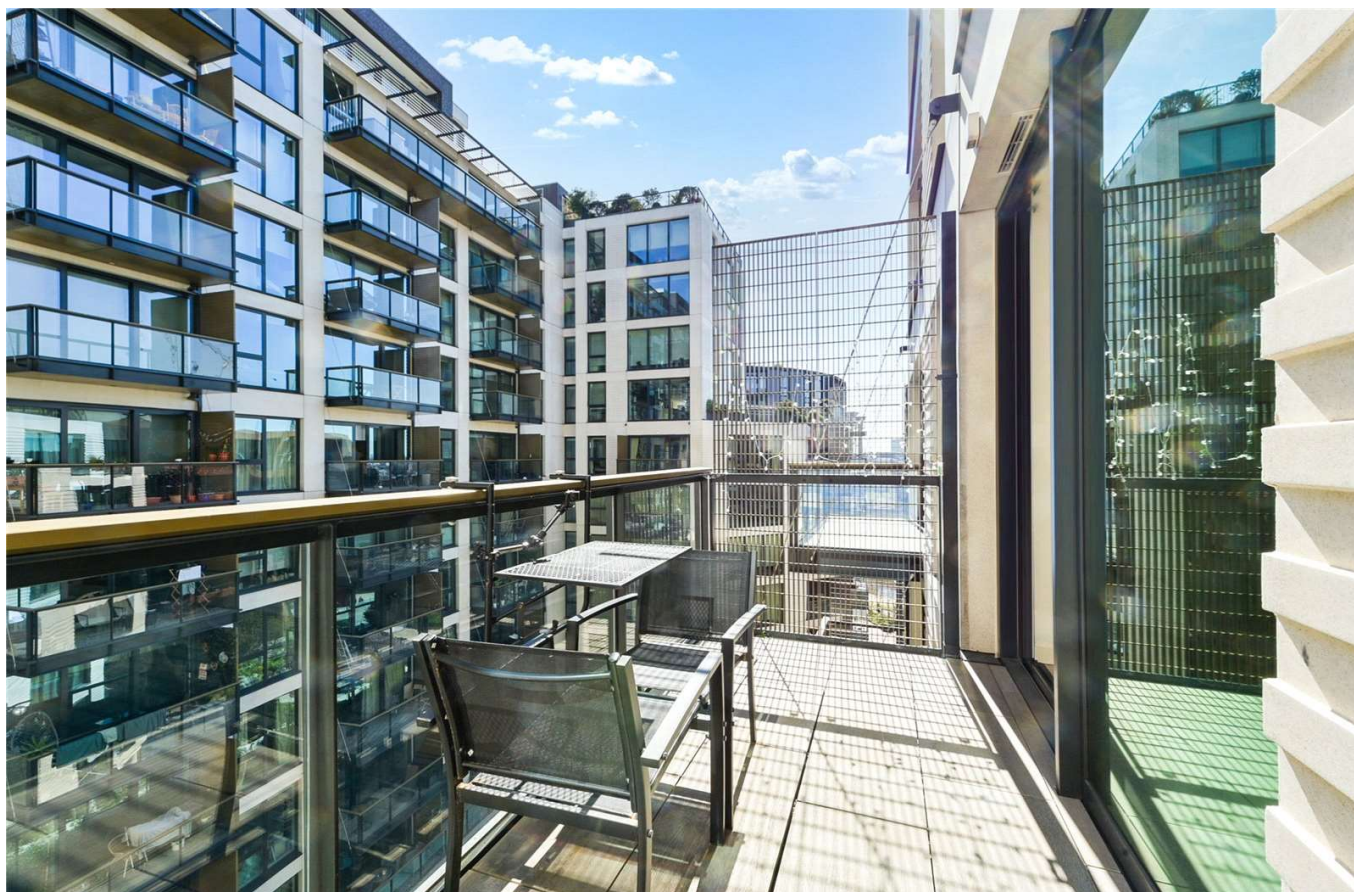
## LOCATION



**KINGS CROSS SALES**  
Unit 4,6 Pancras Square, N1C 4AG

020 7467 2020  
sales.kingscross@bhhs-london.com

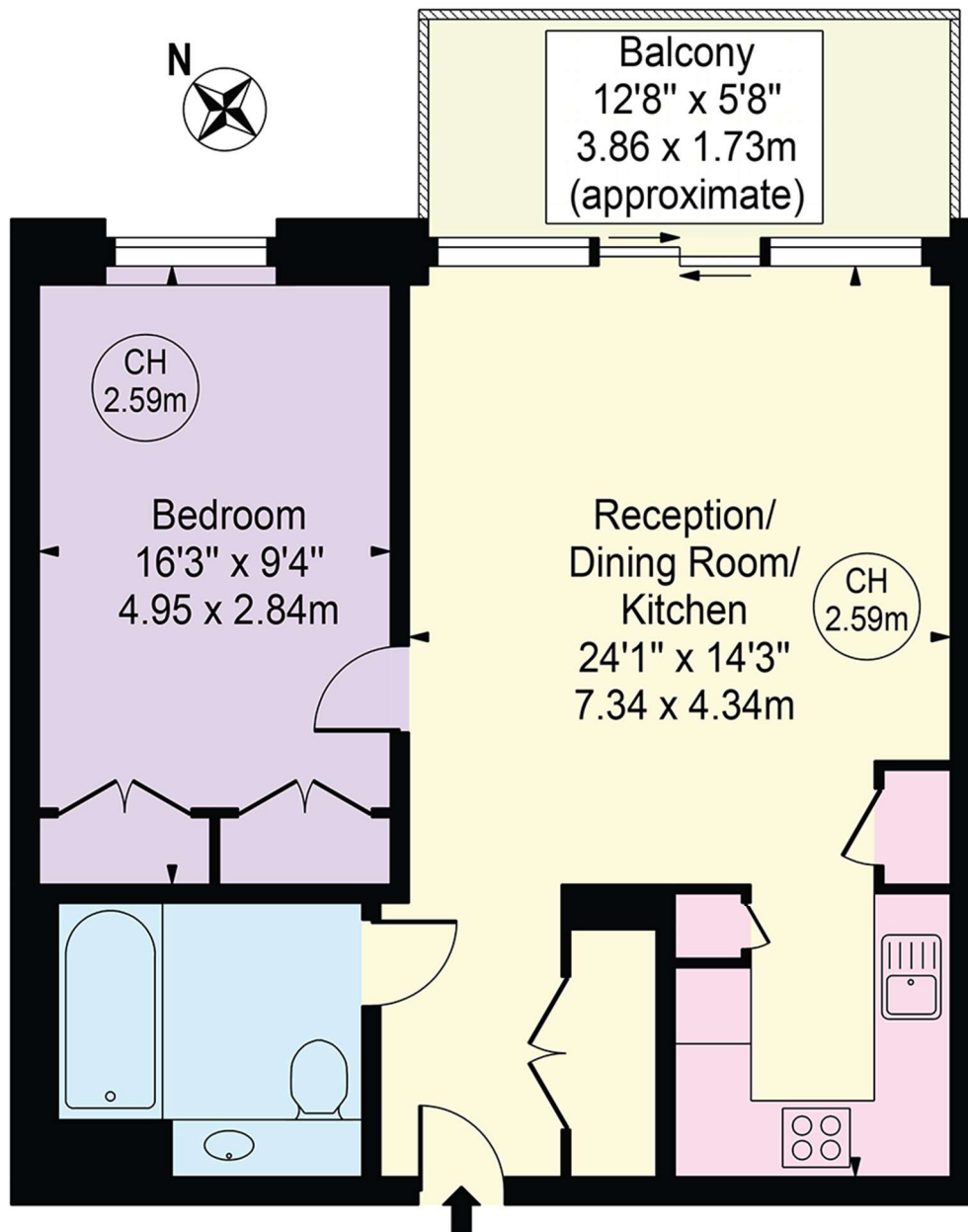




# FLOORPLAN

## Plimsoll Building

Approx. Gross Internal Area 565 Sq Ft - 52.49 Sq M  
Approx. External Area Of Balcony 72 Sq Ft - 6.68 Sq M



### Eighth Floor

For Illustration Purposes Only - Not To Scale

This floor plan should be used as a general outline for guidance only and does not constitute in whole or in part an offer or contract.  
Any intending purchaser or lessee should satisfy themselves by inspection, searches, enquiries and full survey as to the correctness of each statement.  
Any areas, measurements or distances quoted are approximate and should not be used to value a property or be the basis of any sale or let.

Copyright Morriarti Photography & Design LTD