



One Bedroom with Balcony in Prime Plimsoll Building

HANDYSIDE STREET

KINGS CROSS, N1C

Asking Price
£725,000

**BERKSHIRE
HATHAWAY**
HOMESERVICES

LONDON

PROPERTY DETAILS

Guide Price £725,000	Square Footage 587
Council Tax Band F	EPC B
Ground Rent £500 pa	Service Charge £5875 pa
Tenure Leasehold	

A spacious one bedroom apartment with south facing balcony in one of King's Cross' most popular developments, the Plimsoll Building.

Larger than average and overlooking the charming communal gardens, this is arguably one of the best one bedroom options in the building and is available fully furnished by separate negotiation.

Residents benefit from 24-hour concierge service, private dining space and lounge, a well-equipped fitness suite, beautiful courtyard garden, roof terrace, and are moments from all vibrant King's Cross has to offer.

FEATURES

- One Bedroom
- One Reception Room
- One Bathroom
- Upper Floor
- Concierge/Porter
- Balcony
- Lift
- Roof Terrace, Communal Gardens

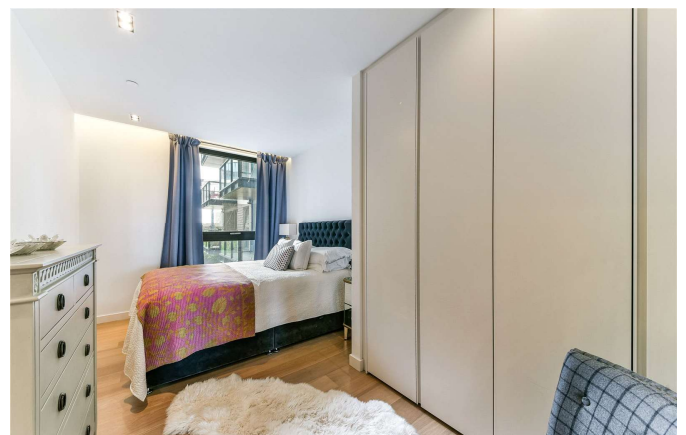
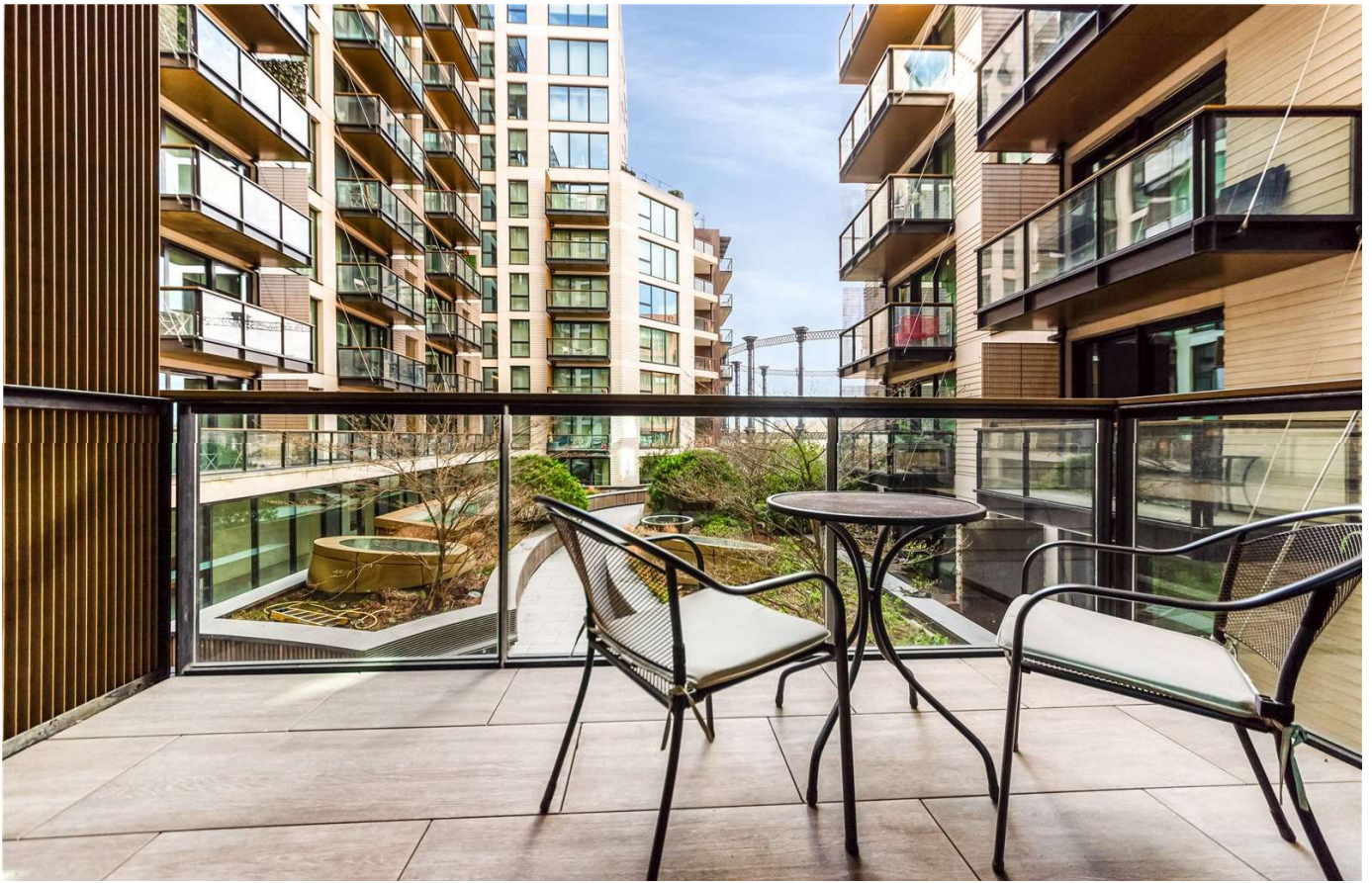
LOCATION



KINGS CROSS SALES

Unit 4,6 Pancras Square, N1C 4AG

020 7467 2020
sales.kingscross@bhhs london.com



FLOORPLAN

PLIMSOLL BUILDING

APPROXIMATE GROSS INTERNAL FLOOR AREA: 587 SQ FT - 54.53 SQ M



FOR ILLUSTRATION PURPOSES ONLY

THIS FLOOR PLAN SHOULD BE USED AS A GENERAL OUTLINE FOR GUIDANCE ONLY AND DOES NOT CONSTITUTE IN WHOLE OR IN PART AN OFFER OR CONTRACT. ANY INTENDING PURCHASER OR LESSEE SHOULD SATISFY THEMSELVES BY INSPECTION, SEARCHES, ENQUIRIES AND FULL SURVEY AS TO THE CORRECTNESS OF EACH STATEMENT. ANY AREAS, MEASUREMENTS OR DISTANCES QUOTED ARE APPROXIMATE AND SHOULD NOT BE USED TO VALUE A PROPERTY OR BE THE BASIS OF ANY SALE OR LET.